


The COMPANION

 Helen Woodward Animal Center

**MEET OUR
NEW YEAR'S
PUPPIES**

NEW
COMPANION FOR
KIDS PAGES!

**EVENT
UPDATE**
PUPPY LOVE 5K
SPRING FLING
CRITTER CAMPS
& MORE!

**THANK YOU!
2014 DONOR
RECOGNITION**

FRIENDS AVAILABLE FOR ADOPTION



SABRINA

I am very sweet and loving, and enjoy talking with cat-itude and interacting with others. I am just a big cuddle bug looking for a forever home!



PLUM

I am an active and super friendly dog and love other canines. I'm looking for an adult home that will give me the structure I need to thrive.



HAMILTON

I might seem reserved at first, but I warm up quickly and although I am tiny I am mighty in personality! I'd love to find a family that will boost my confidence and teach me new tricks.

To see other adoptable dogs and cats, visit animalcenter.org

CREATING A HUMANE WORLD FOR ANIMALS AND PEOPLE

Helen Woodward Animal Center is a unique, private, non-profit organization dedicated to saving the lives of animals and enriching the lives of people. For more than 40 years, our no-kill Center has provided humane care and adoption for orphan animals, as well as animal-centered educational and therapeutic programs for people. The Center is a dynamic, evolving institution that is an agent of change for the animal welfare world. Not only are we operating innovative and beneficial programs for animals and people, but we are teaching others around the world how to successfully market and promote their programs and stop the senseless death of thousands of animals. 🐾

Don't miss a single issue...

Every issue of Helen Woodward Animal Center's *The Companion* newsletter is filled with stories about the relationship between humans and the animals that we love. Four times each year *The Companion* keeps you informed about how you are helping us fulfill our mission of "people helping animals and animals helping people."



SURRENDERED PETS will receive a complete veterinary examination for good health and temperament. A documented history is required for all owner-relinquished animals. Dogs under our care are exercised regularly and cats enjoy comfortable playrooms. Experienced staff screen potential adopters to help clarify needs and ensure a lifelong match. Once an adoption is complete, our staff is available for any assistance to make the transition a success.

On the cover: Helen Woodward Animal Center adoptable, Dana, found her forever home in January.

The COMPANION

WINTER 2015

The Companion Staff

Editor

Renée Resko

Writers

Renée Resko, Laurel Dalsted

Design and Layout

Amy Huzil

Board of Directors

Bryce W. Rhodes, Chairman

Steven A. Anderson, Esq.

Michael M. Arms

Bill Bauce

Charles L. Bieler

James Lewis Bowers, Ph.D.

Chris Breining

Joe Camp

James Hooker

Diane Keaton

Michael McKinnon

Toni W. Nickell

John Reilly

Katie Shull

Arlo G. Sorensen

David Vigil

President / CEO

Michael M. Arms

V.P. of Operations

Rita Truderung

V.P. of Development

Renée Resko

V.P. of Finance, Controller

Renee Simmons

Departments

Accounting

Janelle Bloomberg, Assistant Controller

Michael Seiler, Purchasing/Receiving Manager

Adoptions

Adele Murillo, Manager

Amy Barnes, Assistant Manager

LaBeth Thompson, Inventory Manager

Amanda Kloss, Animal Health Manager

Dr. Stephanie Oba, Veterinarian

Animal Services (Adoptions & Club Pet)

Edward Farrelly, Manager

Club Pet

Myriah Southard, Manager

Companion Animal Hospital

Dr. Patricia Carter, Chief Veterinarian

Development

Laurel Dalsted, Manager

Education

Heather Disher, Manager

Bree Muehl, Assistant Manager

Equine & Outreach Services

Christen Hanley, Director

Human Resources

Wendy Papera, Manager

Maintenance

Vahn Ketelsen, Manager

John Toro, Assistant Manager

Orphaned Objects Resale Shop

Rose Senese, Manager

Pet Encounter Therapy

Robin Cohen, Manager

Public Relations

Jessica Gercke, Manager

Mindy Wright, Assistant Manager

Special Events

Regina Barella, Manager

Systems Programming

Lon Jones, Manager

Therapeutic Riding

Alicia Roe, Manager

Volunteers

Megan McCarty, Manager of Volunteer and

Retail Services

The Companion is published four times a year by Helen Woodward Animal Center, P.O. Box 64, 6461 El Apajo Road, Rancho Santa Fe, CA 92067, a nonprofit, charitable organization. Circulation: approximately 10,000.

This material may be reproduced with written permission from Helen Woodward Animal Center ©2015. For information, call (858) 756-4117 or visit our website at www.animalcenter.org.

PRESIDENT'S MESSAGE

Spring is around the corner and here at Helen Woodward Animal Center February has already been a blur of activity with our 3rd annual **The Business of Saving Lives Conference**. Special guests included Sheriff Joe Arpaio discussing his innovative project converting an unused prison into a life-saving haven for abused dogs to be rehabilitated by prisoners, mental health professionals addressing revolutionary ways to diagnose and treat compassion fatigue in animal welfare staff, dedicated volunteers working to help Native American communities improve their animal welfare situation, and so much more. It was a phenomenal three days filled with innovative ideas and information from speakers like Tamar Geller and Steve Dale on timely topics impacting those on the front lines, and I was honored to offer inspiration and support to this incredible group. I am always in awe of the dedicated people who make this their life's work and save lives every day without giving it a second thought. There are truly angels among us.

We are still celebrating an amazing year with our **Blue Buffalo Home 4 the Holidays** partnership and over **10 million animals adopted** since we began this adventure in 1999. This international campaign now brings over 4,000 groups together and is saving lives at a rate we never imagined. Blue Buffalo is a committed friend that provided a level of support never before seen for the program including a People magazine dedicated holiday ad!

We have so many wonderful events planned to support pets and people in need in the year ahead. **The Puppy Love 5K** finds a new home at Lake Poway this year and everyone is excited to check out this fun new terrain with lots of fascinating wildlife, sights and smells to keep two and four legged athletes entertained. We have more teams than ever before and I encourage you to get a group together and join us for a beautiful day at the lake. We are also excited to announce this year's Spring Fling Gala Chair Mia Parks, Editor of Ranch and Coast magazine, and Honorary Co-Chairs Ed and Sandy Burr of EDCO — both Mia and the Burr's are long-time friends of the Center and the Spring Fling so we are honored by their involvement and support of this year's Gala.

After finding homes for over 3,100 pets in 2014 the bar is set high, but we know in 2015 we can surpass this number and we are already off to a great start. The support of our amazing community and the media who share the stories of these beautiful animals continues to spur on this unprecedented increase in adoptions. Every day, lives are saved because of the care and generosity of friends like you.

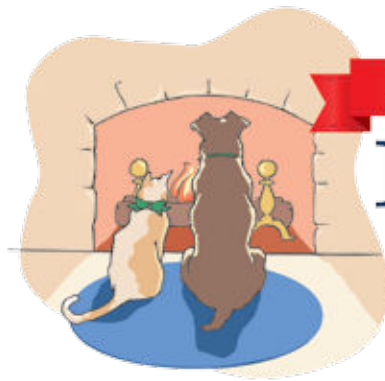
Yours for a more humane world,



Michael M. Arms
President and CEO



“After finding homes for over 3,100 pets in 2014 the bar is set high, but we know in 2015 we can surpass this number and we are already off to a great start.”



BLUE BUFFALO™

BLUE

HOME 4 THE HOLIDAYS

HELEN WOODWARD ANIMAL CENTER

ADOPTION CAMPAIGN

At Helen Woodward Animal Center, we not only save the lives of thousands of orphan pets directly through our adoptions program, but also work to help other groups across the country and around the world increase adoptions and reduce euthanasia in their communities by sharing our tried and true best practices and proven marketing strategies. This work is especially important each holiday season, from October through New Year's, when more families bring a new pet into their home than any other time of the year. Unfortunately, many of these are still being purchased from vendors who source from puppy mills and irresponsible back yard breeders while healthy, beautiful pets in shelters go unnoticed.

With a goal of taking business away from these irresponsible breeders and promoting pet adoption, Helen Woodward Animal Center organizes shelters and rescue groups not only in San Diego County but across the nation and in over 20 countries worldwide through the Home 4 the Holidays campaign each year, the largest most successful pet adoption campaign in the world. Participants receive a complete guide to planning and executing a Home 4 the Holidays adoption campaign, including templates, timelines, checklists, and tips on how to save more lives utilizing social and traditional media as well as partnerships with local businesses and politicians and creative marketing and promotion to drive adoptions.

10 MILLION LIVES SAVED

The 2014 Home 4 the Holidays effort was especially momentous as we saw the 10 millionth pet adopted since the campaign was started 16 years ago. To mark this incredible milestone, campaign sponsor Blue Buffalo committed to providing the family who adopted the 10 millionth pet with a year's worth of food as well as 2,500 pounds of food for the organization that facilitated the adoption. The lucky pup ended up finding his forever home through I.C.A.R.E. Dog Rescue in Rancho Santa Margarita, California. His name is Brewster and he had been found, roaming free, on a rural road in Southern California. A skeletal 5 pounds, covered in scabs, and with damaged teeth, he was starving and fighting a losing battle with the bigger stray dogs in the area who roughed him up on a regular basis. I.C.A.R.E. Dog Rescue took in the brown and white Chihuahua and provided him with a loving foster parent, Dana Stark, who cared for him throughout months of surgeries and medical treatments.

Remarkably, throughout his own healing, Brewster's focus rested elsewhere. As Stark's mother-in-law's health failed, Brewster took to regularly visiting her. As she went in and out of the hospital and eventually into a rehab facility, he seemed to sense just what she needed and would lie quietly in her lap or snuggle up beside her in bed. When visiting her, he would also entertain all the patients, trotting down the hallway, happy to meet anyone; if they had love to share, he found them worthy of his attention and sweet kisses. When Stark's mother-in-law passed away, Brewster seemed to know that his job was done and it was time to find his own forever family. Only a week, later, as though it had been fated, Brewster met the Cunningham family at a PetSmart Adoption event in Anaheim, California.

The Cunningham family had recently suffered the death of their beloved dog named Marshall and it wasn't only the human family members who were mourning his loss. Their rescue Chihuahua named Jack had stopped eating and was notably depressed. Brewster came into the lives of the family and once again showed off his therapeutic gifts. As if by instinct, Brewster took it upon himself to help Jack, often jumping into bed to sit beside him, lying right beside him "in the sunny spot" and "prancing beside him" on their walks together.

"I have been really thinking of getting him Certified as a Therapy Dog," stated Carolyn Cunningham. "He just is perfect for that and has so much love to give. I love the idea of him helping to brighten someone's week the way he brightens my every day."

Thanks to an international coalition of over 4,000 participating pet adoption agencies, facilities and rescue-groups, dedicated to finding happy, loving homes for orphan pets, over 10 million pets like Brewster have found their forever homes through Home 4 the Holidays since inception in 1999. The stories of these successful adoptions filter in from around the world for the end-of-campaign "Heart-Warming Story Contest."

Visit http://www.animalcenter.org/home4theholidays/essay_contest.aspx to read more stories like Brewster's that are done by partners in this life-saving campaign. 🐾



Brewster, the 10 millionth adoption since the start of the Home 4 the Holiday's campaign, poses with his forever family.



THE BUSINESS OF SAVING LIVES

Helen Woodward Animal Center is unlike any other organization in the world in many ways, but one of the most important ways that we are different has to do with how we support other organizations and provide them with the tools they need to be successful. Whether it is a small rescue with only a few people doing a variety of different jobs or a larger organization that would like to emulate many of the programs we are doing here at the Center, our staff stands ready to give them the valuable information they need. We feel strongly that it is truly part of our mission to share what we know and provide the entire industry with opportunities to learn and grow for the benefit of the animals they serve.

Our most recent Business of Saving Lives conference was held at the Wyndham San Diego in February and brought together a diverse collection of speakers and topics that we felt were both timely and critical to our industry, including Compassion Fatigue, Animal Welfare on Indian Reservations, unique marketing and public relations ideas, unconventional solutions to overcrowding and limited resources, and key information about fund raising and working with the media. We can't think of another conference that offers such a diverse array of topics and hands-on curriculum and materials that allow the participants to put the information to use immediately. In addition, we offer phone consultations to every organization so that they can talk directly to our team members about specific needs they may have.

The unique aspects of our conference were made possible by the many talented speakers who gave freely of their time to support those on the "front lines" of animal welfare. We would like to recognize speakers like Dr. Wendy Khentigan and her colleagues Wanda Garner and Julie Chippendale who shared vital mental health information and program templates to create a more supportive environment for those who are struggling with the tough daily decisions of animal welfare, as well as leaders like Diana Webster who is on the Tribal Council and

is the President of The Native America Humane Society who shared the unique challenges facing their community with animal welfare. Sheriff Joe Arpaio brought us a unique solution to bring prisoners and abused animals together for their mutual benefit while utilizing an outdated facility that simply required some modest upgrades to make it ideal for the animals.

Your Center is saving countless lives and lifting up the entire industry with each of these meetings and trainings, with every phone call, and every visit that our President, Mike Arms, makes to facilities around the country in need. There is no urgent need that is turned away and with your support we are changing the world, one pet at a time. 🐾



Helen Woodward Animal Center staff lend their expertise at the 2015 Business of Saving Lives Conference.

NEW YEAR'S PUPPIES FIND FOREVER HOMES



In today's world of quick headlines and random violence, oftentimes things we hear on the radio or television quickly go in one ear and out the other, and oftentimes we are glad that they do. But sometimes you hear something that stops you in your tracks and makes you take pause. The story of the New Year's puppies and their tragic first days is one of those stories. If it doesn't make you stop and think about human cruelty and what people are capable of doing to our animal friends then I don't know what will.

The beautiful pups shown in these adorable pictures are part of a litter of ten puppies who were rescued when their mother mysteriously disappeared just days after they were born. Alone and cold, the tiny pups searched for the warmth and sustenance of their mother, but found nothing. Just when it looked most desperate, their owner discovered their plight, drawn by their pitiful cries to investigate what was wrong with his newest litter.

Finding them alone with their mother nowhere in sight, he called and searched for her, with no response. Unable to care for 10 tiny newborns who needed 24 hour feeding and care to survive, he called for help. By the time the rescue group arrived, it had been discovered that their mother had been fatally shot and left lifeless on a neighbor's property nearby. The pups were taken in from the cold and their journey to safety at Helen Woodward Animal Center began.

The touching story of these amazing pups made such an impact on the community that, we had our first all-nighter ever! A family set up their very own tent in the parking lot to ensure that they would be first in line to adopt one of these beautiful



One family camped out overnight waiting for Chardonnay to become available.

dogs on the morning they became available. Since the puppies were available for adoption near New Year's Day, they were given celebratory names: *Celebrate*, *Caviar*, *Cheers*, *Charity*, *Comfort*, *Corsage*, *Cabernet*, *Chardonnay*, *Champagne* and *Confetti*!

There certainly was cause for celebration when this tragedy turned into a triumph, not only for these scrappy pups but for the wonderful families who waited through a cold night to give them their forever homes. Today, all ten are healthy and happy with their forever families thanks to the love and support they received. 🐾



Happy puppies with their loving new families.



Welcome to our NEW KIDS SECTION of the Companion!
Kids will enjoy learning about our animals by playing games, solving puzzles and expressing their creativity.



CREATURE feature



Meet KRONK

BreedHuacaya Alpaca
Gender.....Male
BirthdayJune 9, 2012
Favorite SnackLeaves

Kronk is smaller and less sure of himself than his roommate Kuzco. He can get anxious when he's too far from Kuzco, who he looks up to for support and confidence.

Despite that however, Kronk does his best when learning new things, and enjoys wearing costumes and being presented because he gets lots of attention and admiration!

He is not easily motivated by food and will usually refuse treats, preferring hay, leaves, and love!

DID YOU KNOW...

There are so many ways for kids to get involved and help pets find homes!

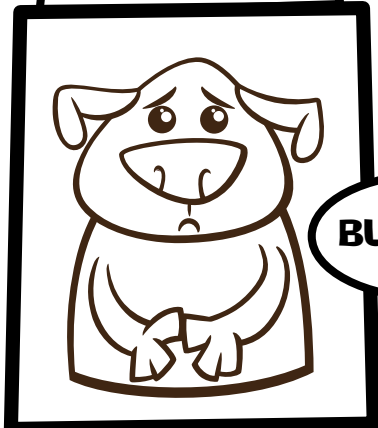
Pet food drives, bake sales, and so many other fun, easy projects all make a difference for animals in need. When you raise \$35 or more you'll be included in the 'Animal Lover's Club' and receive a special t-shirt that shows your support.

Contact laurag@animalcenter.org with any questions or for help with fundraising ideas and get started helping pets today!

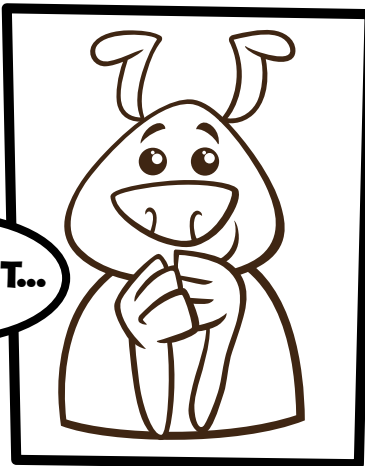


color me!

ADOPTABLE BRUNO



BUT WAIT...



Bruno is waiting patiently for his forever family. Lots of boys and girls have come by, but no one has asked to play with him yet.

A nice family has just come over and is asking about Bruno ... maybe they will decide to take him home.



Bruno just found out he's heading to a new home, to be cuddled and loved forever!

EDUCATION STATION



San Diego County is filled with dog loving individuals and families. Whether at the park, at the beach, or enjoying lunch at a favorite restaurant, there always seem to be dogs around! Although we love dogs, they are still animals and it is important to be safe around them at all times. When meeting an unfamiliar dog for the first time practice these ABC's so you and the pup can safely get to know each other:

A. ASK.

Some dogs LOVE to make new friends while others are a little shy. Because of this, it is important to ask a pet's owner, "May I pet your furry friend?" before doing so. If the dog's guardian says "no," no worries! If the answer is "yes," proceed to letter "B."

B. BE SNIFFED.

Dogs can't talk and ask us what our name is, what we had for lunch, or where we live; however, dogs have a VERY good sense of smell and use it to discover this information. By letting a dog sniff us, we are letting him or her meet us in the same way he or she meets other dogs—by sniffing! It is best to stand still with our hands by our sides while the dog is sniffing.

C. TAKE CARE.

Once the dog has sniffed all over he is ready to be pet! Carefully pet him or her on the back. Some dog owners may tell you where it is okay to pet, but if ever unsure it is safest to gently pet the dog on his or her back.



word search


Find the following words hidden in the puzzle below


ADOPTION	E	T	I	B	B	A	R	S	S	M
ALPACA	H	D	S	Y	T	L	L	M	G	I
ANIMALS	N	C	U	E	P	A	O	U	V	N
CAT	B	O	P	C	M	P	I	V	T	I
DOG	A	N	I	I	A	N	U	V	E	H
EDUCATION	C	L	N	T	E	T	Q	P	K	O
GUINEA PIG	A	A	P	A	P	S	I	I	V	R
KITTY	T	S	P	A	W	O	T	O	T	S
LOVE	A	I	M	N	C	T	D	X	N	E
MINI HORSE	G	D	O	G	Y	A	F	A	A	Y
PAW										
PET										
PUPPY										
RABBIT										

Hashbrown's maze



Hashbrown is a Flemish Giant rabbit, who lives in the Education Department at the Center. Help him find his favorite treat by solving the maze below.

START 

FINISH 



SAVE
THE
DATE!

HELEN WOODWARD
ANIMAL CENTER'S
SPRING
FLING

Bala

SATURDAY, JUNE 6, 2015

LIVE MUSIC

COCKTAILS

GOURMET SELECTIONS FROM
20 OF SAN DIEGO'S
FINEST RESTAURANTS

SILENT AND LIVE AUCTIONS

FOR TICKETS, CALL
858-756-4117 X350

FOR
SPONSORSHIP OPPORTUNITIES,
CALL 858-756-4117 X312

Grab Fido and your friends and
move your paws for a good cause!

Helen Woodward Animal Center's

PUPPY
LOVE 5K



presented by Blue Buffalo

SUNDAY • MARCH 15 • 2015

Adults \$35
Children \$15
(3-12 YRS)

TEAM
DISCOUNT
For six or
more people

NEW
LOCATION

FREE
'AFTER-PAWTY' &
KIDS ACTIVITIES

LAKE
POWAY

Family, Friends
Co-workers, You
and your Furry
Companions!



Sold out in 2014!

VISIT animalcenter.org and REGISTER TODAY!

Support the animals and programs at Helen Woodward Animal Center





FREDDIE'S FINDS

As an organization that depends on support from our community, we are so grateful for the many local businesses that choose to help pets and people in need by partnering with Helen Woodward Animal Center. Over the past year, we have been honored to add Freddie's Finds to our list of generous supporters, and continue to be impressed by the many ways they give back. In addition to donating a portion of all sales to shelters and rescue groups, this fido-friendly company has been an incredibly generous supporter of Helen Woodward Animal Center fundraising events, not only participating as a sponsor, but utilizing their connections to secure discounted entertainment and donating concert tickets for the Spring Fling gala, and underwriting the costs of parking for multiple events. This type of support is so important to the Center because it allows our events to raise even more funds to support programs like Adoptions.



Freddie, of Freddie's Finds

Along with giving back to the pet community through donations, Freddie and his best friend Suri the Shih Tzu also volunteer in the Pet Encounter Therapy program at the Center. Here they are able to give unequivocal and palpable love to people who would benefit from a gentle paw, from nursing facilities to children impacted by

homelessness and everyone in between. They love their therapy work, and owner Tony Carchedi says they "often wonder if it is the pups or the people who benefit more!" 🐾

WHAT IS FREDDIE'S FINDS

Freddie's Finds is a monthly adventure of discoverable pooch proportions! Freddie is searching far and wide to find products pertinent to obtaining his goal, which is to preserve or enhance the well-being and merriment of his furry friends. Our passion here at Freddie's Finds is animals, which culminates in sustaining their health and happiness. We have searched high and low for products that fall into this category. We discovered that the commodity exists, yet a lot of the box companies don't want to put the effort into searching and finding. Along comes Freddie, who weeds out the profit-first companies and looks for brands made by conscientious manufacturers who take pride in producing top-tier products designed to enhance and extend your pup's life.

A portion of every Freddie's Finds sold gives back to the pet community, whether it be a shelter, rescue or foundation. Knowing that we are helping to fund those that are saving lives and bringing light to the appalling conditions of puppy mills and pet stores motivates Freddie in his pursuit. Join Freddie every month on his excursions of sniffing out, digging up and chewing on his latest finds through stories, tweets and photographs. If it's out there, Freddie will FIND IT!

Visit www.freddiesfinds.com to learn more, and be sure to use promo code **FFHW2014** when checking out so \$1 or more per order will come to Helen Woodward Animal Center!



FREDDIE'S FINDS
www.freddiesfinds.com

ANIMAL HEROES

EVERY DAY, WE HEAR INCREDIBLE STORIES OF THE PROFOUND WAYS ANIMALS IMPACT THE LIVES OF THE PEOPLE THEY TOUCH, PROVIDING COMPANIONSHIP, JOY, HEALING, AND SO MUCH MORE.



SAMMY

Many times, animals go beyond providing comfort and affection to help us heal or grow stronger. This is especially true in the Therapeutic Riding program where specially trained equine therapists help individuals with physical and cognitive challenges gain independence, self-esteem, and a greater quality of life. It is not uncommon for clients in the program to form profound friendships with their horse over the course of their weekly lessons.

Joshua is one such student who participates in the program to help with his strength and flexibility. **Most recently he has been working with Sammy, a handsome palomino gelding that Joshua has become quite attached to.** Although his verbal communication is limited, he often mentions Sammy during the week between their sessions. When he had to have surgery recently, he was given a stuffed horse the same color as Sammy, which he kept with him at the hospital while he was away from his friend to keep him company during the surgery and recovery. These special horses help clients make such incredible progress in their physical or cognitive goals because they are not only a therapist, but a beloved friend, as well.



BABY

Not everyone is able to enjoy this special connection with animals right away, some people have a fear of animals for a variety of reasons. The Education department helps people to overcome those fears through the Dog Smart program. Using specially trained, non-threatening dogs, participants learn to understand dog behavior. Each individual, over time, learns to read canine body language, understand how to act around stray and aggressive dogs, and is equipped and empowered with tools to manage day-to-day life.

Baby is one of those special dogs who patiently works with Dog Smart clients so they can feel safe and comfortable around familiar and unfamiliar canines in their daily lives. She has been “working” in the Education department since May 2013, and seems to intuitively know what others need. She even has a special way of playing fetch with two balls, dropping the one she just retrieved when a second one is held up so the client doesn't have to take it from her mouth.

We will never cease to be amazed by the many ways pets like Sammy and Baby impact the lives of those they love, and even those they just met! 🐾

THANK YOU

We would like to express our tremendous gratitude to the **S. Mark Taper Foundation** for their generous support that makes the Therapeutic Riding program possible, and available at little to no cost for our clients. The Foundation has provided \$45,000 to support the program since 2003, most recently through a grant of \$25,000 for 2015 that will provide for the instructional time, care and feeding of our horses, barn and arena maintenance, and so much more that goes into running this wonderful program.

**SAVE
\$20**
when you
register for a
week!

S P R I N G



Critter CAMP

Hands-On Humane Education

Where kids connect with animals!

CRITTER CAMP is filled with HANDS-ON animal interactions, crafts, and games! Daily or weekly registrations available!

**MARCH 30 – APRIL 3
& APRIL 6 – APRIL 10
PRESCHOOL – 5TH GRADE**



For more information
and to sign up today, visit
ANIMALCENTER.ORG/EDUCATION

CAMPAIGN FOR CARING



HELEN WOODWARD ANIMAL CENTER'S CAMPAIGN FOR CARING IS A CAMPAIGN DESIGNED TO REBUILD OR RENOVATE ALL THE DIFFERENT AREAS OF THE CENTER. MULTIPLE PHASES ENCOMPASS EACH OF THE PROGRAM AREAS THAT WILL BE AFFECTED.



Phase one complete

The first phase of Campaign for Caring has already been completed which includes one building with two sides that are vastly different in the services they provide. One half houses the small animal, Companion Animal Hospital, which is run by Chief of Staff, Dr. Patricia Carter, with two additional veterinarians on staff. With over 10,000 square feet and state-of-the-art equipment, as well as a complete dental suite we are able to provide the best care possible for your "best friend" whether cat, dog or exotic.

The other side of the building is home to our administrative offices for all the behind-the-scenes staff that keep the Center

running, from accounting to fund raising and marketing to public relations and social media. This part of the Campaign has been paid off and does not require any additional funding.

The 2nd phase of the project is the renovation of the current Adoptions facility. The Adoptions facility has a myriad of challenges that encompass a number of structural issues including outdoor dog kennels—leaving the dogs exposed to the elements and cold temperatures—as well as a drainage problem which causes flooding near the kennels and an inability for the water to be moved away efficiently during a heavy storm.



Above: The current outdoor kennels;
Below: Helen Woodward Animal Center Adoptions Facility



The medical facilities are sadly lacking in our current building with a closet for our veterinarian's office and very limited space for her staff of vet technicians to do exams or work on adoptable animals. The surgery suite is just a bit bigger and there is only one space available for surgery and very limited recovery kennels.



The current medical and intake areas of the adoptions building are cramped and inefficient

The hallway that is used for intake of animals from other organizations is open to the public and there is no way for our staff to process the pets efficiently. Instead, the cages are stacked and our Adoptions team must climb over each of the kennels trying to pull dogs and cats for health and behavioral exams with constant interruptions from the public. It is stressful for the staff and the animals.



The new facility will accommodate all of these needs and create an aesthetically pleasing, highly efficient new building that will have the appropriate medical facilities and a private area that is not open to the public for intakes. Most importantly, the dogs will have indoor/outdoor kennels and will not be exposed to the elements. The space we currently have will be used more

efficiently but because the project is a renovation, costs will be kept to a minimum as will permitting challenges.

To learn how you can be a part of the Campaign for Caring and leave a life-saving legacy for pets in need, contact Renee Resko at 858-756-4117 x 347 or email ReneeR@animalcenter.org. 🐾

THINKING AHEAD— MAXIMIZE GIVING BENEFITS

As tax time approaches, we all begin to think of ways to put our assets to the best use possible while limiting our tax liability. This is a good time to think about strategic gifts from IRAs and charitable disposition of publicly traded stocks. Take advantage of the long-term growth of your assets for the benefit of animals and people in need, while protecting your funds from undue taxation.

At the end of 2014 (Dec. 19th), Congress again passed the regulation regarding IRA owners age 70-1/2 or older being able to exclude up to \$100,000 a year from income if the IRA funds are paid directly to certain public charities. Unfortunately, this only gave donors a little over a week to learn about and act upon it. This type of distribution is called the Qualified Charitable Distribution (QCD).

At this point, we believe it is fair to plan on Congress passing this regulation again for 2015, so instead of being caught unexpectedly we encourage you to think about making an

IRA donation during 2015 to get ahead of the deadline at year-end and enjoy the tremendous tax benefit of this type of IRA gift.

As a result of stock market increases, we know there are many of you with highly appreciated assets facing significant capital gains tax ramifications if you were to sell your stock at this time. We again encourage you to think about making a gift of appreciated assets to Helen Woodward Animal Center to benefit a program of your choice or for the general operations of the Center. This is a painless way to make a significant impact on the Center while enjoying significant tax savings.

If you wish to discuss this with a qualified professional, we can provide access to one at our facility at no cost or obligation to you. Please contact Renee Resko, Vice President of Development at 858-756-4117 x347.

THANK YOU TO THE WONDERFUL MEDIA OUTLETS WHO SUPPORTED OUR WORK IN 2014!

TELEVISION:

FOX 5 News Team

KFMB – CBS CHANNEL 8 News Team:

Barbara Richards
Jeff Zevely
Shawn Styles

KGTV – ABC CHANNEL 10 News Team:

Joe Little

KUSI – CHANNEL 9 News Team:

Brandi Williams
Dave Scott
Charlie Grisham
Pat Gilligan
Lisa Remillard
Kristen Cusato
Francine Marsaille
Vince Douglas

NBC – CHANNEL 7 News Team:

Whitney Southwick
Marianne Kushi

CW - SAN DIEGO 6 News Team

RADIO:

Clear Channel Stations:

Mark Zegan

MAGIC 92.5:

Jagger and Kristi

PET MAGAZINE/WEBSITE:

DOG FANCY:

Ernie Sloane

NEWSPAPER/MAGAZINE/WEB:

EXAMINER.COM:

Melissa Stoneburner

i5 PUBLISHING GROUP

NORTH COUNTY PUBLISHERS

RANCH AND COAST MAGAZINE:

Mia Stefanko
Bob Stefanko

SAN DIEGO UNION TRIBUNE:

Diane Bell
J Harry Jones
Linda McIntosh

NEWSPAPER/MAGAZINE/WEB cont.:

COAST NEWS

DEL MAR TIMES

DISCOVERY NEWS CHANNEL/WEB

LA JOLLA LIGHT

LA JOLLA VILLAGE NEWS

POMERADO NEWS

RANCHO SANTA FE REVIEW

SAN DIEGO COMMUNITY NEWS GROUP

SAN DIEGO FAMILY

SAN DIEGO MAGAZINE

SCOOP SAN DIEGO

THE PATCH

THE VILLAGE NEWS

Z CODE MAGAZINE

CLUB PET BOARDING PRESENTS

SIX FULL HOURS OF GROUP PLAY FOR YOUR DOG EVERY SINGLE DAY!



Just look at those smiles!

animalcenter.org



AVAILABLE TO ALL DAYCARE AND BOARDING GUESTS!
858-756-4117 EXT 2. | CLUBPET@ANIMALCENTER.ORG



RECYCLE FOR A GOOD CAUSE.

Drop off your recycling at Helen Woodward Animal Center to turn it into funds for pets and people in need! Bring any of the items below (cleaned and sorted) to the drop off bin in front of the main entrance at 6461 El Apajo Road any day or time:

- Plastics
- Paper
- Ink Cartridges
- Metal
- Glass
- Cans
- All Cardboard
- Batteries
- Electronics

For more information contact laurag@animalcenter.org

Proceeds benefit Helen Woodward Animal Center and Solana Santa Fe School

THANK YOU

THANK YOU TO OUR LOYAL FRIENDS AND SUPPORTERS WHO HAVE MADE 2014 THE BEST YEAR TO DATE FOR HELEN WOODWARD ANIMAL CENTER AND MORE IMPORTANTLY FOR THE ANIMALS AND PEOPLE WE SERVE.

This was a phenomenal year for the Center with over 3,100 adoptions of orphan cats and dogs and records broken for both Home 4 the Holidays with our 10 millionth animal placed since 1999 and Remember Me Thursday bringing thousands to our web site to share their love of animals and their sadness over lives lost. We have expanded Pet Encounter Therapy and Therapeutic Riding with the support of our good friends at Lucky Duck Foundation and the another generous family has helped us to bring AniMeals to more low-income seniors and their pets than ever before in honor of their dear Sherry.

The Companion Animal Hospital continues to grow and thrive as does the Orphaned Objects resale shop, but we know none of this would be possible without the caring support of our animal-loving friends in the community. Thank you for all you did in 2014 to make these dreams a reality. We know that 2015 will surpass all our expectations with your help.

Thank you to all of our generous donors who joined or renewed their membership in one of our giving clubs, participated in special events, or provided in-kind support between January 1, 2014 and December 31, 2014.

HELEN WOODWARD ANIMAL CENTER 2014 DONORS

This list represents individuals and organizations who gave a total of \$150 or more between January 1, 2014 and December 31, 2014.

BEQUEST GIFTS

We are grateful to the individuals below who chose to leave a legacy of caring by including the Center in their estate plans. These gifts will help ensure the long-term stability of our programs so pets and people in need will continue to receive the help they need for many years ahead.

Louis & Mary Below Living Trust
The Estate of George F. Benson Jr.
The Estate of Judy Freeman
Jacquelynn L. Haehn Trust
The Estate of Sandra Kennedy
Estate of Patricia Ann Lowry
The Estate of Claudine Miller
The Estate of Seward and Eleanor Norris
The Estate of Peter and Genevieve Rupprecht
Jeanne Swanson Trust

THE HELEN WOODWARD SOCIETY GOLD CIRCLE \$5,000+

A Better Place Foundation
Ace Hardware
Animals for Armed Forces Foundation
Neil and June Ash
Halina Avery
Banfield Charitable Trust
Maxine Beige
Beyster Family Foundation
Fund IV at the San Diego Foundation
Blue Buffalo Company, Ltd

BMW of Encinitas
Linda Brandes
Brenda & Dave Rickey Foundation
Charles and Inge Brown
Bulova Gale Foundation
Edward and Sandra Burr
Neil and Janis Campbell
Charity Fair Horse Show
Charles & Ruth Billingsley Foundation
Cleveland Holdings, LLC
Combined Federal Campaign
Country Friends, Inc.
Covario Inc.
Susie and Bill Davidson
Del Mar Thoroughbred Club
Donald C. and Elizabeth M. Dickinson Foundation
Glenn and Karen Doshay
EDCO Disposal Corporation
Ellen Browning Scripps Foundation
Embrace Pet Insurance
Robert and Mary Jane Engman
Ethel Friends Foundation,
Bank of America, N.A., Trustee
Extraordinary Conceptions
Earl and V. Feldman
Forrest N. Shumway and Patricia K. Shumway Trust
Freddie's Finds
FUTR Family Management LLC
Orrin and Karen Gabsch
Michael and Jane Gilbert
Donald and Ellen Goodwin
Daniel Taner Halicioglu and Victoria Brown

David Hall
Marianne and Stephen Harmon
Harriet E. Pflieger Foundation
Kent Hauschulz
Richard and Janet Hunter
I-5 Publishing
Marilyn Irwin
Sharla Jambers
Jimbo's Naturally Inc.
KUSI-TV
Sylvia Lampitt
Laurel Foundation
Lucky Duck Foundation
Paul Mahan
Kevin and Leann McCarthy
Hope McGinn
Michael and Karen McMahon
Wendy McWethy
Barbara Menard
Tony and Cindy Moran
Susan and Charlie Muha
James and Josie Myers
Nora's Baklava
Nojan and Pamela Omid
P and G The Iams Company
Pacific Sotheby's International Realty
Pacific View Foundation
Chris and Lisa Pedersen
Petco Foundation
Promises 2 Kids
Qualcomm Foundation
Ranch & Coast Magazine
Rancho Santa Fe Foundation
Leslie Register
Bryce and Susan Rhodes
Frederick Rocker
Suzy and Larry Rutkowski

S. Mark Taper Foundation
Marshall and Pamela Saunders
Save This Life, Inc.
Ken and Carol Schultz
Sea World San Diego
Starrett Construction, Inc.
Kenneth Storum and Cindy Hammond
Elmer Tegtmeier
The Alexander and Valerie Viterbi Fund of the Jewish Community Foundation
The Reynolds Family Fund at The San Diego Foundation
The Selander Foundation
The Viterbi Family Fund of the Jewish Community Foundation
Rose Thiessen
Tides Canada Foundation, Patricia & Gordon Gray
Animal Welfare Foundation
Fund of Tides Foundation
Peri and Peg Urvek
Rebecca, David and Kori Vigil
Valerie Viterbi
Paula Whalen
Harry and Onavee White
Whittier Family Foundations
Whittier Trust
William and Ruth Tippet
Foundation
Jacquie Woods
WWW Foundation

THE HELEN WOODWARD SOCIETY SILVER CIRCLE \$2,500 - \$4,999

Allianz Global Investors of America L.P.

Michael Arms
Banfield, The Pet Hospital
Stacy Bartlett Renshaw
Lisa and Jay Berlin
Bissell Pet Foundation
Boehringer Ingelheim
Vetmedica Inc
Edward Borkowski and Nancy McCormick-Borkowski
Bovee, Inc.
Cabo and Coral
Robert Cotton
County of San Diego
Mary Curran
Danielle Short & Associates
Steven and Shannon Diener
EU Services
Dina and Marshal Feldman-Scarr
Lora and Tom Fisher
Randy Greenslate
Lynnette Grines
Hats & Mittens
Mark and Marianne Hoffman
Brad and Sheila Jacobs
Jam Active
David and Kayda Johnson
Nyda Jones-Church
Wendy Khentigan and Kim Ufford
Kroger
Jim Kuden
La Jolla Cosmetic Laser Clinic
Richard Loomis
Michael McKeever
Carolyn Monkhouse
William and Carla Nolan
Marilyn O'Brien
Pacific Pipeline Supply

Therese Pena
Phil's BBQ
Pupologie
Qualcomm
Douglas and Denise Regnier
John Reilly
Residence Inn by Marriott -
La Jolla
Residence Inn by Marriott -
Mission Valley
Rosemary and Michael Risser
Samuel I. and John Henry Fox
Foundation
Searsucker Del Mar
Katherine and Kenneth Shull
Jack and Nanci Simkin
Renee Simmons
Carl and Lorelee Starrett
The Blanchard Foundation
The Grand Del Mar
The Maren Christensen
and William Welch Fund
of the Christensen Family
Foundation
The SUP Connection
David and Jill Theno
Truluck's Seafood, Steak &
Crab
Ron and Carla Wangerin
Weldmac Manufacturing
Willis Allen Real Estate
Julie Yahnke
Michael Zill and Margie
McManigal

**THE HELEN
WOODWARD SOCIETY
BRONZE CIRCLE
\$1,000 - \$2,499**

Brad Adams
Affordable Manufactured
Homes
Airlinx Aircraft Services
Albertson's - Del Mar
Alpaugh Foundation
Cherry Amabisca
Animal Care Equipment +
Services
Animal Spay Neuter Intl
Anonymous Fund at The San
Diego Foundation
John Bailey
Barons
Bruce and Marlene Baumann
Bayer Health Care LLC
John and Elly Beard
Rob Bearden
Carmen Behmer
Donald and Patricia Benke
Betty Beyster
Bobrow/Tanabe Family
Charitable Fund
Ed and Mary Ann Bosanac
BRE SSP Property Owner,
LLC
Rachelle Brotman
Brigid Brown

Cafe Merlot
Jack and Sandra Carey
Casa Sol Y Mar
Catterton Management
Company, LLC
Centennial Escrow
Dana Chaiken and Susan Roll
Connie Chaney
Ava and Jordan Chase
Teh-Liang Chiang
Chronicle Books
Thomas and Rita Cisco
Bill and Gloria Coleman
Norma Cooper
CR&R Incorporated
Craig Living Trust
Gigi and Ed Cramer
Custom Cool Covers
Davanti Enoteca
Jun Davis
Tom Davis
Steve and Cindy Demoss
Jonathan Doering
Michael Emerson
Natalie Eyman
Frances Ezer
Andrew and Barbara Fahy
Brian Feeney
Alan Feingold and Sue Witte
Melinda and Richard Fisher
Michael and Rocio Flynn
James and Susan Foley
Jim Frank and Deborah
Reynolds Frank
Benjamin and Ann Giangiuolo
Susan Glassett and Edward
Farrelly
Norma Goodnight and Robert
Wilson
Goodsnitch, INC
Heart of Gold Legacy
Foundation
Michael and Rebecca
Heckethorn
Daniel Hof
James and Melissa Hoffmann
Hornblower Cruises & Events
Robert Howard
George Howard
HP Company Foundation
Kimberly Hynek
Lisa Illianna
J. Robert Young Fund
at Aspen Community
Foundation
Kristi and Mark Jagger
Don and Julia Johnson
Johnson & Johnson
Patrick and Jennifer Keenan
Richard and Lynda Kerr
Howard Kipnis
KITCHEN 1540
Kong Company
Farida Kopti
La Prairie Group

Thomas Lang
Leo Hamel Fine Jewelers
Maderas Partners, LP
Jeffrey and Marianne Maichen
Marcias Gini O'Connell LLP
Joseph Markee and Teresa
Boley
Jessica Marshall
Bill and Constance McNally
Michelle Mehok
Martin and Constance
Melhorn
Merial Limited
Mia Francesca
Michael and Jori Potiker-
Brown Fund of the Jewish
Community Foundation
Microsoft Matching Gifts
Program
Brenda and Vance Mitchell
Douglas and Cathy Moore
Felicia and Adam Mucci
David and Janice Mullin
Craig and Janet Munson
John Murphy
Patricia Murray
Thomas and Laura Muschamp
Natural Balance Pet Foods
Melissa Rae Nelson
David and Vera Nelson
Toni Nickell
Jeannie and Bruce Nordstrom
Nylabone Products
Desiree and Denise Odion
Christine Oster and Bill
Chatwell
David Parker and Althea Lee
Cammy and Mitch Patridge
Kim Pavel-Harrison and Chip
Harrison
John and Kerry Payne
Stan Perkins
Petco
PetSmart
Alina and Petya
Leslie Phelps
Piatti Restaurant
Mary Jo Potts and Jim Selsor
Virginia Punta
Andy and Donna Purviance
Quidel Corporation
Sudarshan Raghunathan
Rancho Santa Fe Estate &
Fine Jewelry
Rancho Valencia Resort and
Spa
Paul and Sharon Redden
David Regenhart
Residence Inn San Diego
Rancho Bernardo/ Carmel
Mountain Ranch
RipCurl, Inc.
Robert Maes & Associates
Douglas and Linda Rose
Don and Jean Roth
RSF Security

Amy Rushall
Ruth's Chris
Michele Ruzich
Dana Ryan and Mike
Erlanson
Timothy and Christi
Saltonstall
San Diego Biz Law
San Diego Chargers
San Diego Film Festival
Elizabeth Sanchez
David and Stacey Schmolke
Schubach Aviation
SDSU Athletics
Sharp Health
Kevin Sharpe
Leslie Shaw
Short Real Estate Solutions
Norma Simpson
Jim and Gretchen Simpson
Robert Singer and Judith
Harris
Jim and Sarah Sleeper
Steven and Karen Sommers
Sony Electronics, Inc.
Southern Wine & Spirits
Sparkletts Bottled Water
Daniel Stephen
Michelle Sterling
Sun Diego
Sydnee's Pet Grooming
Tagg The Pet Tracker
The Arthur and Jeanette Pratt
Memorial Fund
The Bridges at Rancho Santa Fe
The Brigantine Restaurant Corp.
The Fish Market
The Melting Pot
Thornton S. Glide, Jr. &
Katrina D. Glide Foundation
Thrivent Financial for
Lutherans Foundation
James Torian
Torrey Pines Kiwanis Club
Truist
Gerard and Nicole Tynen
UCSD Extension, 01764
United Way of San Diego
County
Charles Vadum
Jon and Christine Vanderpool
Loren Vanderslik
Joanne Veith and James Healy
Carolyn Walker
Amy and Michael Warlick
Sandra Wawrytko
Wide World Dog LLC
Elizabeth Wohlford
Randy and Nancy Wolman
Bill Super and Glenda Wood
Megan Wynne
Zoom Room Encinitas

**THE LOYAL
COMPANIONS
\$500 - \$999**

067 Eatery
A.S.P.R.
Steven and Adrienne
Anderson
Animal Dermatology Clinic
Scott and Susan Appleby
Janet Arnold
Ashleigh Ashleigh
AT&T Employee Giving
Campaign
Baker and Olive
James and Kathleen Baldwin
Barney & Barney LLC
Jane Bastien
Michael and Tanya Bauer
Stephanie Baxter
Bejar Photography
Donald and Linda Bernstein
Matt and Danielle Borden
Stephen Bosch
Philip and Joan Brady
Helen and Derek Bruton
California Bank & Trust
California Canine
California Coast Coffee
Company
Canidae Pet Foods
Canine Cleaners
Patricia Catalina
Sean and Lisa Cavanaugh
Jennifer Cayer
Bill and Teresa Chen
Kevin Clark and Laureen
Freeman
Michael and Jenifer Clayville
Thomas and Leslie Coll
H. Michael and Jean Collins
Community Service
Association San Diego Unified
School District
Coomber Family Ranch
Wines
Costco Wholesale
Marjorie Coulomb
Rodney and Anne Cressey
Raymond and Betty Crupi
Allen Davis
Del Mar Photographics
Walter and Lorna den Daas
Jan Denny
Tony and Adriana Diaz
DogSpot
Dolce Pane E Vino
Carol Doty
Patricia Duckett
Elise Dunn
Barbara Eanes Smith
Earthwise Pet Supply
Easyturf
Wilda Edgmond
Gina Ellis

Employees Charity
Organization of Northrop
Grumman
En Fuego Cantina & Grill
Sherri Eskesen
Mari Ettlinger
Douglas and Christine Evans
Clyde and Kay Ewin
Darrin and Lisa Fetterolf
Dudley and Marlaine Fetzler
Fidelity Charitable Gift Fund
Anne Fletcher
Kenneth and Charlotte Fortier
Kris Foss
Victoria Fowler
Paul Franca
Rebecca Fredericks
Rachel Friedman
Stacey Fulhorst and Richard
Feferman
Wendy Godoy
Gold and Silver Pawn Shop
Mark Gordon
Terry and Mary Lou Green
Michael and Marissa Gregory
William Hale
Doug and Mary Hall
Suzanne Hatcher
Health Systems for Life
Hendrick & Co.
David and Sherry
Hendrickson
Herbalizer
Steve and Liz Holliday
Betsy Huntingdon
Susan and Martin Hupka
Intervet Inc./Merck
Intuit Foundation
Patricia Jensen
Chuck Jines
Joseph John
John Family Foundation
Kahoots, Inc.
Linda Katzman
Sandra Kelley
Richard and Denise Kerns
Duane and Susan Lawson
Barb Leon
Lisa Lightfoot and Marshall
Rugg
John and MaryLu Lilley
Mark and Stacy Lindsey
Marriott International-
Rancho Bernardo
David Mason and Robyn
Sharp
Jayne and Cliff Masticola
Christopher Maurer
Ronald and Judith McCarver
Adrian and Betsy McKibbin
Craig McLaughlin
Guy and Marsha Miller
Cheryl and Douglas Mitchell
Ernest and Phyllis Moore
Julie Moran

Scott Munro
Edward and Marylee Muns
Muttropolis
Charles Nak and Connie
Crotty
Eric and Susan Naslund
Network For Good
Patti Newton
Nii Foods
Dan and Amy Nykolayko
Ocean Enterprises, Inc.
Scott Oross
Pacifica Restaurant Group
Pamplemousse Grille
Cathy Paulsen
Pay Pal Giving / formerly
Mission Fish
Carol Penner
George and Gillian Percy
Janet Peterson
PetHub, Inc.
Petsafe
photographer.com
Tim and Claudia Pontier
Roger Price
PRP Wine International
Jennifer and Rob Quayle
Steven and Christine Quigg
R B Professional Properties
Amy Racinowski and Dave
Horton
James Ransom and Mhairi
Whitton
Brent and Tiffany Rathbun
Rayner Family Charitable
Fund
Residence Inn by Marriott -
Carlsbad
Jay and Razia Richter
Rod N. McDonald Family
Foundation
Lori Rosano
Diana Rowell
Richard and Kim Salpietra
San Diego County Credit
Union
San Diego County Employees
Charitable Organization
San Diego Regional Center for
the Developmentally Disabled
San Diego Sports, LLC
Rob and Suzy Schaefer
Kelly Schneider
Jerry and Keiko Schneider
Steve and Bambi Schulman
Carl and Helene Schulze
George and Lidia Scoortis
Linda Scott
Patrick and Jeanie Scott
SDCCU
Poorvesh Sheth
Alicia Shuman
Stanley and Renee Siegel
Ron and Mary Siegrist
Kelly and Adam Silfen

Silver Moon Lighting
Karen Siroky
J. Rigby and Lynn Slight
Leslie and Howard Smart
Smart Interiors
Smartstops.net
Samantha Smith
Solana Beach Presbyterian
Church
Margo Sommerfeld
Thirza Spencer
Lori Spurlock
SRA International Inc.
Cynthia Staley
Fern Steiner
Ken Stephani
Stone Brewing Co.
Jack and Louise Strecker
Susan Street Fine Art
Stanley Szary
Teamwork Athletic Apparel
The Centara Foundation
The Honest Kitchen
The Paula B. and Oliver W.
Jones Family Foundation Inc.
The Pet Whisperers
Think Pawsitive - Pet Training
Scott Thomas
Kimberly Travaglia
Rita Truderung
Stephanie Tsang
Tuffy's Pet Foods, Inc.
Unicorn Jewelry and Fine
Gifts
United Health Foundation
Unleashed by Petco
Kenneth Valach
Debra Vella
Maggie Velte
VF Services
Leigh Vosseller
Troy Wakefield
Ronald Walker
Walt Conwell Architect, Inc.
Jack Wasserman
Diane Edenfield and Darryl
Watson
Bill and Sheila Waxman
Greg and Robin Webster
Dave and Sarah Weller
Westview High School
Robert and Patricia Whalen
Steve and Lynne Wheeler
Melissa Wilkins
Sandra Willard
Melissa Williamson
Willis Lease Finance
Corporation
Anne Winder-Steed
Jess Witt
Witt Lincoln
Maggie Wong
Arthur and Dinah Woodrow
Linda Workman and Joe Dicks

Bonnie Zimmerman
Scott Ziobron
**THE FAITHFUL
FRIENDS \$250 - \$499**
3 Dog Bakery
4 the Love of Paws LLC
Amber Adamson
Patrick Albert
Allison Shamrell Pet
Photography
Mark Altier
Amazon Smile Foundation
Alexia Anas
Terry and Diane Anderson
Anklesaria Family Foundation
Kim Anthony
Appleby Family Real Estate
Arrowhead General Insurance
Agency
Gary Bacci
Judith Ann Bailey
Dee Bakker
Jennifer Ball
W. and Naomi Barksdale
Keith Baughman
Terran Bayer
Priya Bendale
Laura Bennett
Barry and Emily Berkov
Neil Berl
Karen Blythe-Smith
Robert and Margo Boles
John Borja and Cynthia
Wilford-Borja
Ingrid Bower
Pete, Margaret and Paige
Boyes
Maureen Boyle
BP Fabric of America Fund
Steven Bradshaw
Karen Brady
Devin Braun
Arthur and Ann Buck
CA Realty Group
Robert Caffey
Patricia Callahan
Ann Carter
CatPaws Helen Sanders
Barbara Cavanah
Robert Cerasoli
Patty Chang
Chang Family Charitable
Fund
Chicago Kindness Club
Jeff Doerner and Dana
Chortkoff
Jasmine Chow
Chuo Chocolatier
City of Encinitas
Denise Clark and Jan Tharp
Roger and Margie Coats
Paul and Elaine Collander
Community Concerts of
Rancho Santa Fe

Susan Cordell
CosBar-La Jolla
Frank and Jan Costa
Bonnie Covey
Barry and Anne Marie Crake
Jane Cronin
Stanley and Rosanne Crooke
Mark Crootof
Dallmann Fine Chocolates
Linda Daniel
Gary and Denise David
Stan and Debbie Davis
Joseph and Terri Davis
Jacqueline Dewitte
Martin and Carol Dickinson
Heather Dietsch
Dirty Dogs
Charles Dodson
Dogdanas
Geoffrey and Kimberlee
Douillard
Laura Drake
Charlie and Martha Duncan
Emily Eason
Mallory and Julie Eberlin
Entertainment Promotions
Douglas Enz
Estancia La Jolla Hotel and
Spa
Darleen Evans
Eventbrite
Fairbanks Ranch Mobil
Michael and Duyen Fenston
Brian Finneran
Christine Finnerty-Gerard
Erin Fogarty
Nicole Fortunato
Glen and Linda Freiberg
Sidney and Paulette Friedman
Furlocity, Inc.
Grace Furman
G.O.D Giving Opulently to
the Divine
William and Linda Gabriel
Tim and Nancy Gackstetter
Walter Gajewski
Craig and Meredith Garner
Alex and Carrie Garufis
Steven Gates
Donna Genet
Jerome Gilding
Brad and Roxanne Gill
Gillispie School
Girl Scout Troop 4901
Scott Gnau and Amy Webb
Lew and Elizabeth Goldman
GoPro
Robert and Beverly Gound
Grande Colonial La Jolla

Graywolf Production Group
Great Call Inc.
Meghan Griggs
Ken, Charles and Naomi Grisham
Michael Grust
Michael Hagstrom
Karen Haines
Ann Harmon
Karen Haubrich and Geoffrey Miller
Michael Hayward and Laura Schrandt-Hayward
Robert and Margo Heidemann
Heinzinger/Pfann Family Foundation
Monroe Hemmerdinger
Jill and Darryl Hensley
Heritage Capital Advisors, INC
Carolyn Hickey
Preston Hiers
Clark Higgins
Highlands Ranch Animal Hospital
Katelyn and Parker Hill
Hilton San Diego/Del Mar
Lori Hinkelman
Patricia Hoffman
Christopher and Natalie Holcroft
William and Edith Howe
Melony and Chris Huber
Helen Humphries
Fredericka Iwatsu
Howard and Hannah Jarson
Suzanne Johnson
Jack Johnson
Jerilyn Jones
J. Michael and Susan Jones
Joseph and Magdalena Jones
Susan and Bret Jorgensen
Michael Kabat
Jon and Amy Kapsis
Katherine Cosmetics
Bill Kearney
Keller Williams Realty Carmel Valley/Del Mar
Richard and Beverly Kerns
Kathleen Kilbourne
Carolyn King
Elizabeth Kleese
Kevin and Nicole Korb
James and Karen Kozen
Michael Kroomer
Nathan Labiak
MaryLynne LaMantia
Madison Larsh
Donald and Betty Lasser
Katherine Lazzaro
Leash Your Fitness
Lana Little
Jewel Locke

Sandra Lofaro and Tyrone Berlanga
Deborah Long
Robin Luby
Luv San Diego Surf
Robert Maes
Robert Mahan
Steven and Yvonne Maloney
Laura Maloney
Julie Malott
Katharine Mangan
Nancy Manning
Richie Mara
Marrokal Construction Company
Joyce Marshall
Kevin May
Letofsky McClain
James McCrink
Marianne McDonald
Chris McEniry
Siriporn McGillivray
Janet H. McLaughlin
Lori McMacken
Robert McNicholas
William and Margaret Merrill
Gioia Messinger
Midwest Homes for Pets
Alma Miller
Linda Milner
Corinne Mitchell and Bob Mieg
Carmen Moi
Christina Mojica
James Montgomery
James Moore
Carole Morrison
Dennis and Leigh Ann Naas
Naked Juice
National Christian
Lois Navolt and Alan Vigeant
Joe Nekrasz
Katherine Nelson
Maureen Newell
Toyelle Nicol
Loren Nielsen
Nothing Bundt Cakes - Mission Center
Pavla Nygaard
Nancy O'Fallon
Olive PR Solutions, Inc.
John Olson
Robert Olson
Glenn and Gabrielle Oratz
Ronald and Marilyn Palermo
Deborah and Alfred Parker
Lucy and Richard Parks
Emiliano and Martina Pasillas
Passport Unlimited
Karen Patterson
Peter Pawlowski
Anne Pentland
Scott Perry
Pet Haus, Inc.

Pet Walker Plus
Eric Pilmore
Pink Lagoon
Positive Future Club
Keith Prueett
Pur Lounge
Jerilyn Ramey
Lindsay and Brent Ramos
Rancho Valencia Resort
Susan Reed
Audrey Reisenauer
Residence Inn by Marriott - Gaslamp
Jack Reynolds
Cindy Richardson
Chris and Kimberly Riddle
Patricia Rocha
Arturo Romero
Ruffwear
Terence and Arlene Rush
Patricia Rynd Morgan
Salt Swimwear
San Diego Bowl Game Association
San Diego Pet Training
San Diego Symphony
John Sanders
Juliana Sanger Yee
Joseph and Barbara Scafidi
Raymond Schafer
Bob and Vicki Schraner
SDG&E
Sea & Smoke
Pamela Sears
Cuneyt and Susan Serdar
Serendipity Boulevard, Inc.
Shadow Mountain Resort and Club
Allison Shamrell
J. Howard Shelov
Keith and Kim Shores
Skincential
Susan Slaght
Dan and Cindy Smith
Snooze Del Mar
Daniel Sogorka
Shari Sorbo
David Soussan
Arlene Spencer
Nancy Stanley
Sterling Interiors/Design
Julian and Gale Stienon
Susan Strachan
Penny Strand
Paul and Angela Stratton
SunCraft Solar
Carl Sundstrom
Bruce and Margaret Sutherland
Martin Tabachnick
Vincent and Renee Teran
The Inn Rancho Santa Fe
The Patio Restaurant Group
The Toffee Box

The Walking Company
Robin Thomas
George and Kristen Thornton
TikiPaws
Trio Ranch
Amy Tsai
Barbara Turnbull
Angelica Tyree
Margaret Varshock
Nancy Veach
Kevin Vernon
Michael Vernon
Voila Hair Atilier
Christine Wallat
Bill and Janice Ward
David and Cynthia Warner
Bill and Cathy Webster
Kenneth and Joan Weiss
Maren Christensen and Bill Welch
Mark and Gayle Wells
Wells Fargo Community Support Campaign
Jody Westberg
John Whalen
Emily, Harold and Mary Wheatley
Patricia Whisler
Pamela White
Wickland Family Trust
Ron Wilson
Deanne Witt
Carrie Woodland
Curtis and Pamela Worrell
Sirius and Amber Yoo
David Zapalo
Larry Zeitlin
Gail Zides

THE BEST FRIENDS \$150 - \$249

Lindette Abbott
Tanya Achermann
Liane Adams
Mike Adams and Lori Bunting
Glen and Jeri Adams
Jacqueline Adimare
Marino and Susan Aguilera
Gary and Jill Albright
All Cities Water Treatment, Inc
Hayes Anderson
Sharon Arbelaez
Gilbert and Karen Armour
Henry Armstrong
Rebecca Arnold
Ralph and Susan Arnott
Judith Bailey
Carol Baldwin
Paul and Patricia Barnier
Michael and Melissa Bartell
Beau Bow Co.
Deborah Begay
Barb Beinbrink

Roy Bell
Ursula Bell
Birch Aquarium at Scripps
William Blair
Stephanie Blair
William Bland
Diane Blankenburg
Linda Blinkenberg
Michelle Bloch
Stephen Boyd
Jane Brackman
Clifford and Christine Breining
Michael Breuer
Catherine Brose
Martha Brownlow
Marie Brunner
Kevin and Jane Burton
Suzanne Cairo
Cal Pacific Orchid Farm
Calidogz
California Shaved Ice
Patricia Calkins
Joanne Campbell
Dave Caniza-Roy
Jim and Kathy Caputo
Thomas Carr
Jamie Carr
Cars 4 Causes
Andrew Chang
Ron Chapman
Donald and Lucye Christiansen
Kimberly and Michael Clancy
Kathryn Clayton
Ken and Karen Cohen
Debra Colwell
Alan Conroy
Rosemary Conway
James and Joan Cook
Joseph and Angela Cortese
Jocelyn and Gregory Cortese
Coupaw.com
Carina Courtright
Jon Covel and Karin Hughes
Crafted Cocktails
Margaret Crockett
Lisa Crosbie
Judith Crowley
Amando and Mary Cunanan
Dan and Sharon Curry
Kim and Tori Curtis
Devonne Daley
Debra Davidson and Jamie Janis
Crystal Davieau
Joe Davis
Thomas Davis
Michael Davis
Shayna Davis
Eugene Dekerguelen
Del Mar Dress Company
Diane DeMarino
Jae Dennis

Robert and Susan DeRose
 Alison Dion
 David and Rose Dishman
 Anna Disser
 Barbara Dixon
 Marc and Gabrielle Doss
 C.A. and Sharon Dunn
 Carol and Donna Durlak
 Linda Dye
 Randy and Kathy Ehrle
 Lois Ehrlich
 Equine Surgical Services, Inc.
 Margaret Espiritu
 Margaret Eugenio
 Rick and Leslie Evans
 Dawna Evans
 Cassandra Evans
 Helen Evers
 Julie Fagan
 Andrea Fagersten
 Gary and Mary Fairbanks
 Deborah Felin-Magaldi
 Vivian Ford
 Patricia Fox
 David and Susan Frant
 Harry Fraser
 Freddi Pakier Health
 Coaching
 Ruben Frid
 John and Tena Friery
 Hollis Fuller
 Marilyn Fulton
 Michelle Gavino
 Matthew and Alexandra
 Gerritsen
 David and Jeanne Gibbs
 Betty Giordano
 Girl Scout Troop # 4110
 Girl Scout Troop 8716
 Miriam Gitchoff
 Patricia Gladstone and Brian
 Dyck
 Dave and Karen Glenn
 William and Diana Glimm
 Katherine Gold
 Martin Goldsmith
 Miriam Gomez
 Margaret Gordon
 Cheryl, Myra and Robert
 Gordon
 Dean and Kim Gordon
 Frank and Bernice Graciano
 Gracie & Co.
 Valerie Graeser
 Edithann Graham
 Scott and Paula Granzow
 Ralph Graves
 Dustin Griffin
 Marvin and Marian Grzys
 George Gutierrez
 Vera Halbach
 Hale Pet Door
 Bruce and Susan Hall
 Edward Hand

Mark and Christine Hanson
 Kristen Happ
 James Harden
 Robert, Catherine and Lexie
 Hastings
 Susan Heberer
 Rob and Dara Hembury
 Tami Henderson
 Laurie Henson
 Sandra Higley
 Rick Hildebrandt
 Jacqueline and Samuel Hill
 Melanie Hoff
 William Hoffman
 Honest Tea
 David and Eileen Hoppen
 Ann-Cathrin Howard
 Erick Hu
 Su-Chun Huang
 Jeff Huisman
 Kristi Hulbert
 Kim Hundley
 Kathy Hunt
 Amelia and Barry Hunt
 IBM Corporation
 Elaine Jacobs
 Alan Jacobson
 Gary and Martha Jacobson
 Gloria Johnston
 Ronald Jones
 Suzanne Jones
 Joya Vida
 & Sala Joya Jewelry Boutique
 Joan Justus
 Nancy and Michael Kaehr
 Diane Kay
 Natasha Kazakoff
 Minako and Koji Kimura
 Susan Kirby Jones
 Mary Kirk
 Kerri Klein
 Michael and Linda Koligman
 Chris and Lisa Kotitsa
 Pablo and Janice Kovarik
 Jasmin Kraft
 N.L.S Krasnoff
 Eric and Jae Kremer
 William Kunz
 Jon and Linda Kurtin
 Adrienne Lasby
 Marc and Cathy Lebovits
 Marc Lebowitz
 Todd Lee
 J.P. Leventhal
 Mary Limoges
 Lululemon Athletica
 Wanda Lundy
 Marcy Mackless
 William Maier and Rachel
 Becker
 Dana and Melissa Main
 Mainly Mozart
 Deborah Mandabach

Holguin Martina
 Margaret Martinovic
 Kathleen Masnec
 Charles and Andrea Maudlin
 Ronald and Pamela Mc Nutt
 Kristyn McEwen
 Christine McFadden
 David McLaren and D.L.
 Nelson
 Sidney McMillin
 Sharon McNair
 William and Constance
 McNally
 Frank McRock
 Rebecca McVaugh
 Barbara Meinke
 Diana Mertrude
 Amy Messex
 Ona Lee Mighetto
 Jody Miller
 Stephen Miller
 Patricia Mitchell
 Arthur and Karen
 Montgomery
 Trisha Moore
 William Morgan
 Morgan Medallion Classic
 Debbie Morlock
 Moss Adams LLP
 Rachel Moyer
 Tonya Munding Dixon
 Sheila Munding Dixon
 Joanna Murphy
 Chris Mustion
 Fred and Julie Nankervis
 Linda Naranjo
 David Nemirow
 Nestle Purina
 Richard Newell
 Nylie Designs
 Stephanie Oba
 Meghan O'Brien
 Christy O'Connor
 Maury and Patricia Pages
 Anna Paperno
 Pet Emergency & Specialty
 Center
 Janet Peters
 George Pinkham
 Robyn Pope
 Ward and Sharon Powell
 James and Nan Pratt
 Michael and Dora Prihar
 Pro Rituals Salon
 Promo Paw
 Jim and Rochelle Putnam
 Joan Qualls
 Markayla and Linda Quane
 Gina Radermacher
 Elizabeth Regan
 Tanya Reiss
 John, Renee and Katherine
 Resko
 Wallace and Nancy Rick

Wendi Rife
 Maria Rivera
 Shelley and Christopher
 Rizzotti
 Anne Robb
 Don and Peggy Robertson
 Janet Roemer
 Polly Rogers
 Larry and Tanya Rose
 Teresa Ruiz
 Ruben Ascanio
 Caroline Sachs
 Sammy's Woodfired Pizza
 Kristina Scanlan
 Lisa Scarbrough
 Kirk and Elle Schaeffer
 Craig and Christen Schilling
 Gerald Schneeweis
 Debbie Schoen
 Mindy Schwartz
 Erich Scriba
 Paul and Elizabeth Sebourn
 Kathleen Secan
 Don Sexton and Ting-Yen
 Chang Sexton
 Tracy Shaw
 Sharon Sherman
 Keelie Sickmann
 Skin Solutions
 Randy Slinkard
 Joel and Celeste Sokoloff
 Yvonne Spencer
 Spencer Foundation
 Joan Stanley
 Donna Stark
 Angela Stell
 Debra Stephens
 Richard and Donja
 Stephenson
 Ron and Barbara Stolle
 Ziheng Su
 Sunshine Hot Dogs
 Sarah Swafford
 Janet Taipale
 Tango Del Rey
 Tiffany Tann
 Vicki and Ric Tarbox
 Gary and Diana Taul
 Renata Terra
 The Benevity Community
 Impact Fund
 The Whaley House
 Barbara Thompson
 Nancy Thompson
 Tijon Fragrance Lab Boutique
 Sue Tinsley
 Traditional Martial Arts
 Center
 Jonathan Trutter
 Unire Real Estate Group
 Unite Salon
 Joan Van Ingen
 Sharon Van Ivan
 Ribca Van Nooijen

Heidi Van Zant
 Alain Vasserot
 Melany Vaughn
 Cherie Vinopal
 Karen Vold
 V's Barbershop
 Michael Wagner
 Wendy Wang
 Jennifer Waren
 Stephen and Judith Watson
 Darien and Amber Webster
 Debby and Jeff Weiner
 Victoria Welch
 Where Music Begins,
 Academy of Music
 Chester and Janice Willis
 Todd Wilson
 Tamar Wilson
 Fred and Darlene Witte
 Connie Wolfe
 William and Norah Wolff
 Louis Wolfsheimer
 Betty Wong
 Robert and Holly Yarris
 Paul Yasuda
 Anthony and Deann Yoshida
 Gerald Young and Robert
 Leon
 Tania Zenteno
 Barbara Zubaty
 Lissa Zyromski

We have made every effort to accurately acknowledge our generous donors. If there has been an error or omission please do not hesitate to contact us so we may correct our records.

**858-756-4117 x348 or
 corey@animalcenter.org**





HELEN WOODWARD ANIMAL CENTER

6461 El Apajo Road • P.O. Box 64 • Rancho Santa Fe, CA 92067
Phone (858) 756-4117 • Fax (858) 756-1466 • animalcenter.org

NON-PROFIT ORG
U.S. POSTAGE
PAID
SAN DIEGO, CA
PERMIT NO. 328

CREATING A HUMANE WORLD FOR ANIMALS AND PEOPLE



Upcoming EVENTS

MARCH 7

Volunteer Orientation

MARCH 14

Tack Sale

MARCH 15

Puppy Love 5K Run/Walk

MARCH 1 - 29

Animals of Spring Tours

MARCH 30 - APRIL 10

Spring Critter Camp

MAY 8

Puppy Prom

MAY 9

Volunteer Orientation

JUNE 6

27th Annual Spring Fling Gala



march 1-31

Enjoy the "Animals of Spring" at Helen Woodward Animal Center!

- ages 2 yrs - 5th grade
- \$12 per child (minimum \$50)

Email us at education@animalcenter.org
or call (858) 756-4117 ext. 318.

Tours by appointment only.



PLANNED GIVING INFORMATION

- I would like to know more about the Center's pet bequest policy.
- I would like to know more about including the Center in my will.
- I would like to be invited to an informational bequest luncheon.
- I have already included the Center in my estate plans.

Name _____

Address _____

City _____ State _____ Zip _____

Phone _____

Email _____

For more information, please detach and return completed form in the provided remit envelope.