

# THE COMPANION

PEOPLE HELPING ANIMALS AND ANIMALS HELPING PEOPLE

*Turning a new page  
for orphan pets*

a quarterly publication of Helen Woodward Animal Center

# FURIENDS

available for adoption



## BLIZZARD

### Shepherd-Terrier blend

I'm a sweet but strong-willed dog looking to find my forever home! I would love to find a loving, adult-only family with lots of dog experience to show me how to be the best I can be! If you have an active lifestyle then I'm the perfect dog for you!



## LULU

### Terrier blend

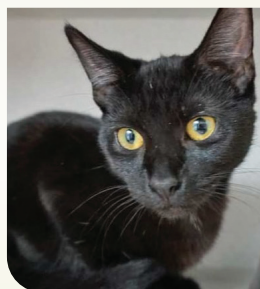
I am just a big sweetie pie who loves to be held. Don't let my size fool you, I am very energetic! I am fun loving and willing to learn. I would do best in an experienced home with teenage children! If I am the one for you, come see me soon!



## MILO

### Shepherd-Boxer blend

I am a smart and energetic dog who loves the outdoors! I would love to find a family with older children who can teach me how to be the best dog ever. If I sound like the one for you, come see me soon!



## BATGIRL

### Domestic Short Hair blend

Hello! I am playful and inquisitive and just need you to help me to grow into the best kitty ever. Won't you make me part of your family? I hope to see you soon!

To see more adoptables, visit  
[animalcenter.org](http://animalcenter.org)

## CREATING A HUMANE WORLD FOR ANIMALS AND PEOPLE

**Helen Woodward Animal Center** is a unique, private, non-profit organization dedicated to saving the lives of animals and enriching the lives of people. For 50 years, our no-kill Center has provided humane care and adoption for orphan animals, as well as animal-centered educational and therapeutic programs for people. The Center is a dynamic, evolving institution that is an agent of change for the animal welfare world. Not only are we operating innovative and beneficial programs for animals and people, but we are teaching others around the world how to successfully market and promote their programs and stop the senseless death of thousands of animals. 🐾

### Don't miss a single issue...

Every issue of Helen Woodward Animal Center's *The Companion* newsletter is filled with stories about the relationship between humans and the animals that we love. Four times each year *The Companion* keeps you informed about how you are helping us fulfill our mission of "people helping animals and animals helping people."

### Stay Connected

FB.com/  
helenwoodwardanimalcenter  
Twitter: @hwac  
Instagram: @hwac  
Pinterest: pinterest.com/hwac  
YouTube: animalcntr6461  
Snapchat: helenwoodwardac  
LinkedIn: Helen Woodward  
Animal Center



### Volunteer

Giving your time at any of our fundraising events, or donating your skills or experience to help on Center grounds are just some of the many ways you can help people and pets in need! Visit [animalcenter.org](http://animalcenter.org) to learn more.

### Be Informed

Be in the know of events and fundraisers happening in our community, and across the globe. Subscribe to our e-newsletters, visit [animalcenter.org](http://animalcenter.org) and enjoy this publication.



**SURRENDERED PETS** will receive a complete medical examination for good health and temperament. A documented history is required for all owner-relinquished animals. Dogs under our care are exercised regularly and cats enjoy comfortable playrooms. Experienced staff screen potential adopters to help clarify needs and ensure a lifelong match. Once an adoption is complete, our staff is available for any assistance to make the transition a success.

### Staff

#### Editor

Renée Resko

#### Writers

Fernanda Lopez and Renée Resko

#### Art Direction & Layout

Eric Rossicone

### Board of Directors

Bryce W. Rhodes, Chairman

Steven A. Anderson, Esq.

Michael M. Arms

Charles L. Bieler

Chris Breining

Joe Camp

Daniel Taner Halicioglu

Mark Harris

James Hooker

Diane Keaton

Michael McKinnon

Toni W. Nickell

Katie Shull

Arlo G. Sorensen

David Vigil

Andy Wasa

#### President / CEO

Michael M. Arms

#### V.P. of Operations / CFO

Rita Truderung

#### V.P. of Development

Renée Resko

#### V.P. of Finance

Renee Simmons

### Departments

#### Accounting

April Betz, Controller

Michael Seiler, Purchasing/Receiving Manager

#### Adoptions

Hella Tyler, Adoption Services Director

Emma Cusack, Animal Health Manager

LaBeth Thompson, Inventory Manager

Anita Peake, Foster Program Manager

Marie Wiggins, Assistant Manager Client Services

#### Club Pet

Therese Cordova, Manager

Leah Gearhart, Assistant Manager

#### Communications

Jessica Gercke, Director

Fernanda Lopez, Manager

#### Companion Animal Hospital

Angela Gaeto, Chief of Staff

Chelsea Camacho, Manager

#### Development

Kristine Fissette, Development Manager

Eva Lagudi-Devereux, Special Events Manager

Eric Rossicone, Graphic Design Manager

#### Education

Haylee Blake, Manager

Michelle Carll, Assistant Manager

#### Equine and Outreach Services

Christen Hanley, Director

#### Human Resources

Wendy Papera, Director

Stefanie Northcross, Manager

#### Maintenance

Vahn Ketelsen, Manager

Joe Hernandez, Assistant Manager

#### Operations

Nicole Massara, Director of Special Projects

#### Orphaned Objects Resale Shop

Mike Salas, Manager

Dianne Lefferts, Assistant Manager

#### Pet Encounter Therapy

Robin Cohen, Manager

#### Social Media & Technology

Jackie Kelleher, Manager

#### Systems Programming

Lon Jones, Manager

#### Therapeutic Riding

Courtney Mellor, Manager

#### Volunteers

Megan McCarty, Manager of Volunteer and

Retail Services

The Companion is published four times a year by Helen Woodward Animal Center, P.O. Box 64, 6461 El Apajo Road, Rancho Santa Fe, CA 92067, a nonprofit, charitable organization. Circulation: approximately 8,500. This material may be reproduced with written permission from Helen Woodward Animal Center ©2022. For information, call (858) 756-4117 or visit our website at [animalcenter.org](http://animalcenter.org).



Dear Friends of the Animals,

This time of year always signifies renewal and growth – a time for us to celebrate new life and hope for the future. It has never been more appropriate for us to celebrate Spring than it is this year as we approach a steep decline in COVID cases and the return to some type of normalcy. Here at Helen Woodward Animal Center we are preparing for what is always an extremely busy time for us with pregnant moms and newborn puppies and kittens arriving weekly.

I am proud to say that your Center not only had a phenomenal year in 2021 with almost 4,000 adoptions during the most challenging of circumstances, but that we are off to an amazing start in 2022 with a January record of 330 adoptions! We have been short-staffed, we have had supply chain issues with food and other basics, and we have been overwhelmed with phone calls from organizations around the country begging for our assistance to save the lives of orphan pets in need who are quite literally out of time. The Adoptions team has not only stepped up to meet their goals but they have exceeded them. They have gone above and beyond all expectations to be there for organizations in need around the country, particularly in places like Texas and Louisiana where the euthanasia rates are shockingly high.

Whether we are providing round the clock feeding to kittens without their mothers or intensive medical treatment to a dog who has been shot in the neck or hit by a car through some horrific act of cruelty, our staff and foster volunteers are here to provide whatever care is needed to give these beautiful pets a storybook ending they deserve. As a result of your generosity, we have been able to save more lives than ever before and take the most difficult of medical cases that other organizations have turned away.

I am also pleased to say that our other departments are up and running and extremely busy. From Therapeutic Riding to Pet Encounter Therapy the need has never been greater and our staff is doing everything they can to accommodate as many clients as we can. Our Humane Education programs are full and AniMeals has never had more clients in need of home pet food delivery. Our community outreach effort, Pets Without Walls, is meeting the needs of homeless clients and their pets throughout San Diego and we are proud to announce the unveiling of the new Lewyt Mobile Pet Health + Wellness program that is serving low-income seniors through our partnership with Meals on Wheels.

Your Center never rests and will never be content when there are pets and people who need our help and we thank you for making this life-saving work possible.

For a more humane world,

Michael M. Arms  
President and CEO



## Celebrating 50 years in 2022!

It's an exciting time at Helen Woodward Animal Center. We're celebrating a historic milestone all year because the Center is turning 50 years old!

Founded in 1972 by Helen Woodward, a devoted animal-lover who purchased this property in Rancho Santa Fe, she dreamed of a facility that would encompass comprehensive animal welfare and educational programs for kids.

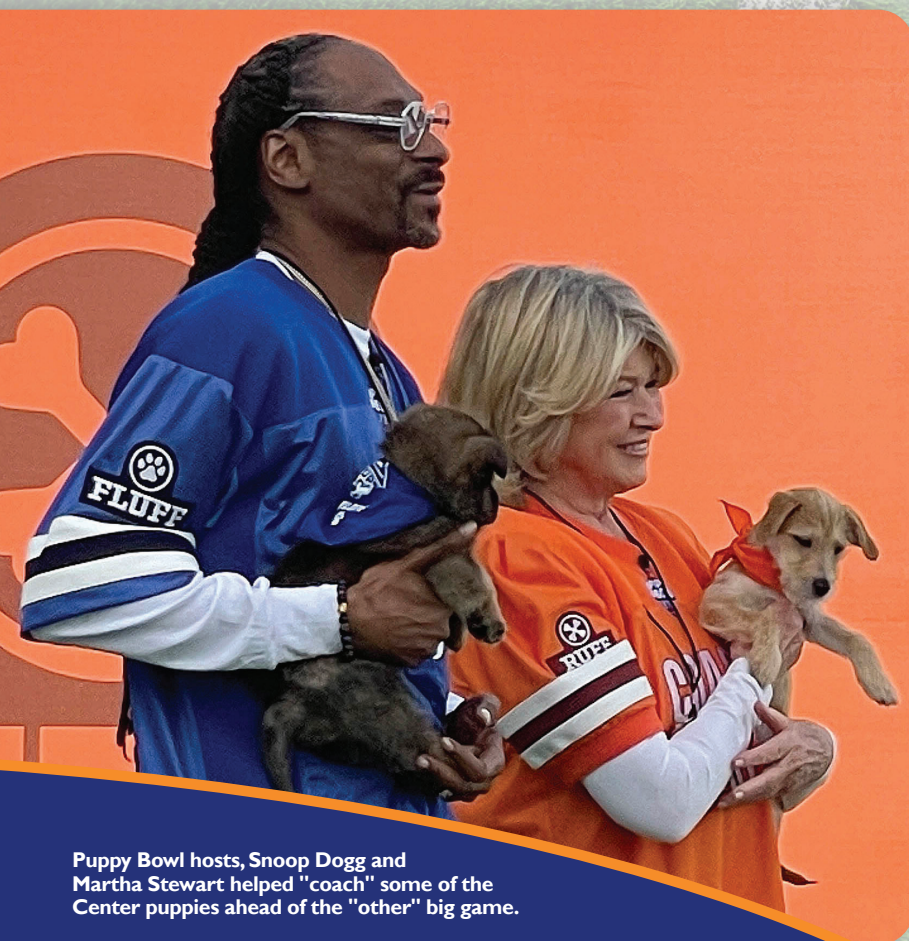
She knew that change in the world of animal welfare had to start in the youth.

Helen loved the outdoors. She said, "The days that the sun doesn't shine don't count." Her happiest days were spent on the Del Mar beaches with her dogs.

50 years later, the Center boasts 15 unique programs, houses the largest animal-related educational center for kids and saves 4,000 orphan pets a year.

Throughout the year, we will be looking back at the Center's most significant moments. Also, stay tuned for ways to get involved as we celebrate 50 years of enriching the human-animal bond.





Puppy Bowl hosts, Snoop Dogg and Martha Stewart helped "coach" some of the Center puppies ahead of the "other" big game.



## FIREWORK

Chihuahua/Spaniel blend

Team Fluff



## SPANGLES

Chihuahua/Spaniel blend

Team Ruff



## MARCUS

Chihuahua blend

Team Ruff

# PLAYING FOR FOREVER HOMES!

## CENTER PUPS PAWTICIPATE IN CUTEST SPORTING EVENT OF THE YEAR

There is another "big game" on Super Bowl Sunday. Some would call it ruff but it is mostly fluff. It features comPETitors on the gridiron whose skills include pouncing and fetching and most importantly, being absolutely adorable.

Animal Planet's Puppy Bowl once again featured star furry-athletes on February 13, 2022 including six Helen Woodward Animal Center puppies.

Helen Woodward Animal Center first became a part of the world's cutest game four years ago when a tiny Center orphan terrier named Flo made the trip to the east coast to compete.

During the game, Flo's hilarious bounce drew the attention of the RUFFeree and, in turn, stole some serious screen-time.

Drawn by her athleticism, the Center was asked to come back in 2020 with another Center cutie, a miniature chocolate poodle-blend. Bobby showed so much spunk he became a featured player and a finalist for that year's MVP (Most Valuable Puppy).

In 2021, although the pandemic put the kibosh on large gatherings and cross-country travel, Animal Planet was bound-and-determined to provide coast-to-coast exposure for orphan pets from its regularly participating shelters. The "Adoptable Pup" segment interspersed available orphan pups and their stories throughout the game. Helen Woodward Animal Center was delighted to introduce Bandit to the world, an adorable, 3 month old, cattle dog-blend.



That year, the Center's 2019 player Flo, now named Poppy, was also featured, in a "Where Are They Now" segment, giving viewers a glimpse at her happy life with her forever family and the unconditional love she provides to people in hospitals, nursing homes, and other special needs facilities as a weekly pet therapy visitor.

This year, the Puppy Bowl featured three comPETitors in the big game. Spangles and Firework are adorable Chihuahua/Spaniel siblings who were both born on the 4th of July. Marcus is a fun-filled Chihuahua blend with a playful spirit. All of these pups were chosen for their star-quality and gentle-nature. They traveled cross-country to New York to play in the big game with Marcus and Spangle making up team RUFF and Firework igniting team FLUFF.

Their PAWsome skills on the gridiron and fun personalities quickly earned them forever homes of their own upon their return.

In a fun twist this year, three additional Helen Woodward Animal Center pups (Burrito, Beau, and Buttons) also received stellar screen time with none-other-than Martha Stewart and Snoop Dogg, the Puppy Bowl hosts!

The Puppy Bowl promotes lifesaving pet adoption by highlighting rescue pups from throughout the country and giving viewers a look at the star-quality that shelter pets truly possess.



"Lucky Dog" host Eric Wiese visits with Center dogs during show filming.



Communications Director Jessica Gercke, with Eric Wiese, and Blue Buffalo Co-founder Billy Bishop.

# CBS "Lucky Dog" Series Highlights Helen Woodward Animal Center Rescue Work

This winter, Helen Woodward Animal Center received national television exposure on the Emmy Award-winning CBS show "Lucky Dog", thanks to partner Blue Buffalo. The "Lady" episode, which filmed at the Center on December 13, featured the Center's process of checking-in one of the many rescue vans arriving to Helen Woodward Animal Center each week with the assistance of "Lucky Dog" host Eric Wiese.

Wiese and his wife, social worker Rashi Khanna Wiese star in "Lucky Dog" which shines a spotlight on the many at-risk dogs in high-kill shelters who need rescue, training and a chance to meet their perfect family. The show follows the process of turning rescue dogs into loving pets. Seeing the parallel mission of both organizations, Center partner Blue Buffalo (also a sponsor for

"Lucky Dog") connected the producer of the national television show with the Helen Woodward team.

"We were really honored to be a part of this show," said Fernanda Lopez, Center PR Manager. "With the help of our rescue partners, the Center pulls thousands of orphan dogs from high-kill shelters every year. We see what amazing pets they become and how happy they make their families. "Lucky Dog" does a wonderful job reminding the public that rescuing a dog is a blessing for both the dog and the family."

In December, Wiese joined Center staff as they welcomed dozens of adoptable shelter animals arriving from overcrowded shelters around the country. The episode, which aired on January 22, highlighted the Center's multi-step process including bathing, feeding, veterinary exams and temperament testing, all in preparation for potential adoptions.

## Betty White

### HONORING A FRIEND TO ORPHAN PETS

Betty White is remembered as an animal advocate who used her star-power to be a voice for orphan pets. She leaves a legacy centered around compassion and love for the animals with whom we share our earth. While her impact spans across the globe, she also left her mark on Helen Woodward Animal Center.

The Center first partnered with Betty White in the late 80's when she visited the Center and was filmed narrating a short documentary giving viewers an overview of the organization.

Then, in 1994, Betty White became the first recipient of the annual Humane Award, a recognition given by the Center to those who have made a significant impact on the world of animal welfare.

Most recently, in 2015 Betty White partnered with Helen Woodward Animal Center on a show called "Best in Shelter by Jill Rappaport" in which she helped promote senior pets. The Center named a group of dogs after characters in "The Golden Girls."

When Betty White passed away on New Year's Eve just weeks before her 100th birthday, a social media post encouraging fans to donate just \$5 to an animal rescue organization in Betty's honor went viral.

By January 17, Betty's birthday, the Center received more than \$34,000 in generous donations in honor of Betty White from hundreds of people.

These kind gifts are currently helping to continue Betty White's mission and saving many precious lives.





Love them like family  
Feed them like family.®

BlueBuffalo.com

THE BLUE BUFFALO CO. THE BLUE BUFFALO CO. THE BLUE BUFFALO CO. THE BLUE BUFFALO CO.

**BLUE**  
Superior Nutrition  
Ultimate Protection

Life Protection Formula with LifeSource Bits®

Indoor Health with LifeSource Bits®

Healthy Bits

Healthy Grainfree

Can you

Google SEARCH

your pet?

SaveThisLife.com  
Microchip & Recovery System


Diamond Membership Now Includes Patented Instant TEXTable Microchip Feature

Save 25% on all replacement Pet ID Tags, get assisted by a Dedicated Pet Recovery Specialist when your pet is lost, get instant TEXTable\* pet's microchip#, and many more features when you upgrade your pet registration to **DIAMOND!**

Scan QR Code for more details!

\*Exclusively available with Diamond Membership

Contact Save This Life to upgrade your pet's membership to Diamond!  
www.SaveThisLife.com or 855-777-CHIP (855-777-2447)



SCAN ME



Ariela Leff uses her business to help children in need.



## Made with Love!

### ENTREPRENEURIAL TWEEN'S BRACELET SALES FUND HEALING ANIMAL ENCOUNTERS FOR CHILDREN IN NEED

A San Diego tween is using her savvy business skills to help children in need through the healing power of animals, one bracelet at a time. Ariela Leff is just 11 years old, but she is already finding unique ways to make a big impact in her community. She is the founder of Lulu's Bracelets and donates 50% of each sale to Helen Woodward Animal Center's Pet Encounter Therapy (PET) program. She has already made \$510 in donations, making it possible for children with special needs to receive a therapeutic visit from PET animals.

With the support of Whatever It Takes (WIT), an organization helping teens and tweens develop leadership and entrepreneurial skills, Ariela started Lulu's Bracelets last summer. Her mission is to use her passion for making beautiful beaded bracelets, with helping to bring the unconditional love of animals to those in need.

"At WIT, we teach our young entrepreneurs the importance of not only creating a sustainable business, but also creating impact by giving back to organizations, charities or social causes. Given Ariela's love of dogs and desire to help children who are in the hospital, it made sense that she selected PET

as her give-back organization," explained Sarah Hernholm, WIT President & Founder. "I know that sometimes balancing school and Lulu's Bracelets is a lot for her, but she will say – 'Each bracelet gets me closer to helping more kids and more dogs!'"

The Center's PET program brings the unconditional love and tactile benefits of animals to those in hospitals, nursing homes, children's centers and more. PET animals range from dogs and cats to rabbits and even miniature horses. Last year the program facilitated more than 5,300 therapeutic animal interactions.

In mid-December, Ariela made her first donation of \$250 to Helen Woodward Animal Center's PET program, funding a visit to a local school for children with special needs. She has since made another \$260 gift. "The best part of Ariela's gift is that all the love and care that she put into making and selling her bracelets has been beautifully transformed into children receiving the love and care of our therapy animals," said PET Manager Robin Cohen. "We are not only impressed by Ariela's talent and willingness to give back, we are so grateful. Her donation is helping to bring smiles to many kids facing difficult times."



## Puppy Cuddle Package

Looking into the face of a sweet playful puppy, you can't help but smile. Helen Woodward Animal Center is here to help spread smiles with the help of our fuzzy friends awaiting adoption.

The Center's Puppy Cuddle Package brings the unconditional love of animals to you to help you celebrate a special occasion, cheer up a friend or simply reduce your stress.

We recently helped an animal-loving birthday girl celebrate her doggie-themed party. Her friends all got to cuddle and experience the joys a wagging tail can offer.



Another recent Puppy Cuddle Package request came from a loving husband whose wife was feeling down due to a broken leg. Surprised at the adorable gesture, she sat surrounded by puppies for the duration of our visit overwhelmed with happiness.

Learn more about the Center's Puppy Cuddle Package at [animalcenter.org](http://animalcenter.org). Experiences are available for 1 to 2 hours and all proceeds support the pets and programs at Helen Woodward Animal Center.

# A Lifetime of Love

Helen Woodward Animal Center adopter of two beautiful dogs, Ken Stark, recently wrote into the Center wanting to express his gratitude. He shared with us a love story that made his heart full for 12 years.

This love story starts in 2009 at Helen Woodward Animal Center. Named Dreamer at the time, Cheyenne wagged her way into what would become her forever home. Her new dad Ken, was going through a transitional phase in life but despite all the change, she became his constant.

Right away, Cheyenne loved her new life. Ken built her a covered dog run from the master bedroom so she could freely enjoy the outdoors or get cozy whenever she wanted.

Cheyenne relished her time as a single dog, spending her days playing, hiking and even at doggie day camp sometimes. She loved that Ken would come home for lunch every day for midday cuddles.

She also loved other dogs. Much more than people. Meeting strangers was okay as long as she could hide behind dad when it got too scary.

In 2010, Cheyenne and Ken decided it was time to bring home another furry family member.

They went right back to Helen Woodward Animal

Center where they met Maya. Ken says the adoptions team found Cheyenne the perfect sister.

They were bonded right away. They spent their days playing and using the dog run to lay in the sun.

Their evenings were spent with dad, roughhousing in the yard and swimming in the pool. At night they would sleep side by side.

For the next decade, Cheyenne, Maya and Ken relished their life together.

They loved hiking in the San Diego hills and exploring every corner of their neighborhood park. They rode in their boat and swam in the river. They loved traveling together. Road trips in the truck took them as far as Oregon on grand adventures.

Quiet time spent at home was filled with watching neighborhood kids play from the window and seeing who was delivering packages that day.

The girls were even featured in a charity

calendar called Dollies and Doggies.

Then in 2020, Cheyenne was diagnosed with cancer in her back leg. It didn't hold her back. She continued her zest for life on three legs. Maya took notice of Cheyenne's new hop and knew to take things a little easier on her sister.

They both started slowing down the following year. Maya's arthritis started to take its toll.

She crossed the rainbow bridge followed closely by Cheyenne. Both were 14 years old.

"They provided many years of companionship and happiness both for them and me. They will be deeply missed," expressed Ken. "Thank you, Helen Woodward Animal Center for helping us with the chance to make Cheyenne and Maya's life, along with mine, very enjoyable and loving." Ken recently returned to the Center to find a new companion, and it was love at first site when he met Matilda who is benefitting from his patience and experience.



*Soapy Joe's knows that pets are great members of any family. We recently added Mitters to the Soapy Joe's family and covered up to \$20,000 in adoption fees in February so that other San Diegans can bring a furry companion home. We're proud to support pet adoption and the lifesaving work of the Center.*

NATURALLY FRESH IS THE TRUSTED LITTER BRAND OF HELEN WOODWARD ANIMAL CENTER.

**NATURALLY FRESH**  
FOR THEIR NATURAL INSTINCTS

Made from all-natural walnut shells, Naturally Fresh is an eco-friendly, biodegradable litter that's good for your cat and the planet. It has the organic ability to neutralize odors better than clay, pine, corn, and wheat, while remaining free of perfumes, toxins, and silica dust.

ALL-NATURAL. BIODEGRADABLE. CERTIFIED SUSTAINABLE.

NATURALLYFRESHLITTER.COM



Helen Woodward Animal Center

## 2022 WORKSHOP DATES

MAR. 12 • MAY 21 • SEPT. 24 • OCT. 9  
9:30AM-11:30AM AGES 5 AND UP

Warm spring weather brings out a variety of animals, and some of them can include snakes. With rattlesnake season approaching in San Diego (April-October), what better way to learn a little more about these ravishing reptiles than with our SnakeSmart program! Whether you're someone who would rather stay socially distant from a snake or someone who is just curious about these scaly serpents, this program can benefit you! Attend to learn more about snakes and their behavior, what to do if you encounter a snake in the wild, and hopefully inspire compassion for these often misunderstood animals.

VISIT

[ANIMALCENTER.ORG/EDUCATION](https://animalcenter.org/education)

FOR FULL PROGRAM DETAILS & ONLINE REGISTRATION

QUESTIONS?

CALL US AT (858) 756-4117 X318

OR E-MAIL [EDUCATION@ANIMALCENTER.ORG](mailto:education@animalcenter.org)



# Save the Date

Saturday, June 11, 2022

Join us for a Celebration...

Helen Woodward Animal Center proudly brings you our  
34th Annual Spring Fling Gala



# The Golden Age of Hollywood

Come enjoy this radiant evening to celebrate our illustrious history and bright future ahead!

Visit [animalcenter.org](https://animalcenter.org) for event updates and more information



# They all have a story to tail...

**E**ach week, dozens of orphan pets arrive at Helen Woodward Animal Center. Many travel hundreds of miles to us in search of safety and shelter. Some pull up in a rescue van thanks to magnificent transporters who drive the long hours knowing that second chances await for their precious cargo. Others even come to us through the air, flying across deserts and oceans to reach us. Whatever their method of arrival, beautiful furry friends are saved here.

While we know that once at the Center, happy endings are around the corner, often the pasts of these orphan pets are troubled or unclear. Here are just some of their stories...



## Momma Love

Momma Love was completely out of options when she landed in our care. She had gone from shelter to shelter in Texas unable to find refuge due to overcrowding. This gentle mom had nine teeny 1-week-old puppies and to top it all off she was heartworm positive.

Unfortunately, many shelters are not equipped to handle the needs of pets like Momma Love who need time to nurture babies and recover.

Thankfully, the Center was her saving grace. With us, she has been getting the care and time she needs. Once she sees her pups off to their forever homes, she will continue her lengthy treatment for heartworm. We will stay by her side until she finds a loving family of her own.



## Hope

Hope was a sweet momma dog caring for five precious puppies. We named her Hope because her story reminded us of why we do this lifesaving work. She was found outside a dollar store near the border. She was far along in her pregnancy and desperately in need of help. Had our rescue partner not picked her up when they did, she could have given birth on the streets, risking her and her babies' health.

It's as if she knew she was finally safe because a day after arriving at the Center, she gave birth to four girls and one boy. With us, she will continue to receive loving medical care and the attention she deserves until she and her babies find their own forever homes.



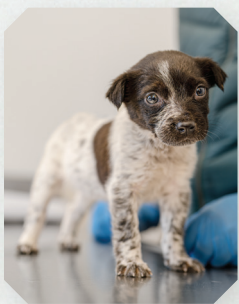
## Wolfgang

Sometimes, it can be hard to piece together an orphan pet's past. When it came to Wolfgang, we just knew we wanted to help him. This handsome feline showed us nothing but love but why he was avoiding using his front leg, was a complete mystery. He arrived at the Center from a local shelter partner.

He had a severe limp and evidence of previous trauma. Veterinarians said Wolfgang was possibly hit by a car in his past. They also found previous injuries to his spine and ribs. After numerous thorough medical check-ups and x-rays, our team decided to send him to a neurology specialist.

They determined, our lovely big kitty was suffering from nerve damage and over time, would continue to heal and improve. His foster family even noticed him starting to use his paw, while not for walking, he was using it to playfully bat at toys.

After getting a clean bill of health otherwise and improving every day, Wolfgang started his search for a forever family and was quickly swooped up to continue being his cuddly self in a loving home.



## Enya

Enya was picked up for transport just in time. This precious Chihuahua blend was continuously passed up for rescue. She sat waiting in a Texas shelter while doing her best to care for her puppies. Meanwhile her clock was ticking. Thankfully, our rescue partner knew exactly where she belonged. This caring momma made the journey via van transport to Helen Woodward Animal Center.

Since her arrival, she has received complete medical exams, a loving foster home and time to decompress. She did a wonderful job raising her pups and saw them off to adoption. Now, she is gaining back her strength and will begin her own search for a forever family once receiving her spay surgery.

## Zara, Zuri & Zelda

Even more in need of rescue and transport than pregnant momma dogs are bottle babies. Too young to feed themselves and without a mom, bottle babies require round the clock care. That kind of attention is often impossible in shelters around the country where resources are slim. That's the situation Zara, Zuri and Zelda found themselves. In arriving at just four weeks old after their mom was tragically hit and killed by a car, these miracle babies needed us more than ever.

In our care, they got the medical attention they needed and were bottle fed by one of our amazing foster volunteers. Over the weeks, they grew stronger and healthier and even developed their own unique puppy personalities. Before long, at around 8 weeks, they were altered and wagged their way to the adoption floor where they quickly won the hearts of their new families.

## Help us tell more stories with happy endings...

From the time beautiful orphan pets step onto a transport van or plane and arrive at the Center to receive preventative medicine and specialized medical care, our hearts are full knowing second chances are being made possible. But this lifesaving work is only possible thanks to incredible donors who give generously. Will you help us tell more of these incredible success stories? ***Start saving lives now at [animalcenter.org](http://animalcenter.org).***

# WHERE are they now?



**Gus Formerly Chilaquiles,  
March 2018**

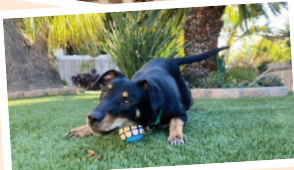
Gus is loving his life after adoption. We recently got an update from his pawrents who said:

"Gus loves digging holes at the beach, sticking his head out the window on car rides, snuggling in bed, Himalayan dog chews, hiking and going on bike rides in his dog backpack. During the pandemic, he has gone on road trips with us to Big Sur, Los Angeles, Cambria, Ojai, and Palm Springs. We can't imagine our lives without him."



**Rumble, January  
2022**

During his time at the Center, Rumble became a staff favorite thanks to his joyful and playful personality.



We recently received this sweet update from his FURever family:

"First off, thank you to you and the rest of the Helen Woodward team for taking care of Rumble for so long. It was clear how much everyone cared about him, and that meant a lot to us in terms of adopting.

He really enjoys anything soft - the couch, a folded blanket, and especially our bed (although he's sleeping in his crate for now.) He loves exploring our house, the yard, the neighborhood and everywhere else we go. He's really curious and I'm hoping he'll keep getting more comfortable with us and our home."



## *Helen Woodward Animal Center Partners to Launch New Lewyt Pet Health + Wellness Program*

*Working with Meals on Wheels, the program provides free veterinary care to the pets of low-income seniors*

Helen Woodward Animal Center is partnering with Meals on Wheels San Diego County on a brand-new program dedicated to ensuring low-income seniors in our community are able to keep their loving pets.

The new Lewyt Mobile Pet Health + Wellness program started providing free veterinary care for the four-legged companion of Meals on Wheels San Diego County clients in mid-February.

The Center's partnership with Meals on Wheels San Diego County dates back to 1984, with the launch of the AniMeals program. AniMeals delivers pet food to the pets of homebound seniors, Wounded Warriors and those experiencing homelessness. It began after a Meals on Wheels volunteer noticed that seniors were sharing their food deliveries with their beloved pets, jeopardizing their own nutritional needs in order to care for their furry companions.

Now, the Center is teaming up again to further assist local seniors. The program is providing critical veterinary services on board a fully equipped mobile medical unit to the pets of low-income seniors at no cost to them including wellness exams, preventative care like vaccinations and flea/tick medication, spay and neuter surgeries and more.

According to Meals on Wheels San Diego County, one in 10 seniors in San Diego experience hunger and nearly half live alone. Coupled with the isolation that has come about due to the pandemic, it is more important than ever that furry family members remain healthy and at home with the seniors who need them.

"The Lewyt Mobile Pet Health + Wellness program is another important way that we can ensure seniors in our community are able to keep their beloved pets in their care," explained Renee Resko, Center Vice President of Development. "We know that pets provide endless joy, comfort and unconditional love to their people and are at times seniors' only source of companionship. By offering free veterinary care, we lower the chances of a senior needing to give up their furry friend to a shelter because they can't afford the associated costs."

The new Lewyt Mobile Pet Health + Wellness program is made possible thanks to funding from the Alex and Elisabeth Lewyt Charitable Trust. The Center extends its deepest gratitude to the foundation which has generously supported the Center in a variety of ways including funding for the Center's lifesaving pet transfer program and emergency response team.

In the coming months, the Center aims to expand the Lewyt Mobile Pet Health + Wellness program's reach to more low-income pet parents in our community regardless of age.

# Thank You!

Unlike many other animal organizations, Helen Woodward Animal Center is privately funded and receives no government support. As a result, the work that we do for pets and people in need is only possible because you care. We are so grateful for each of you that have donated so that we can be there for orphan pets who are out of time and options and provide critical programs that strengthen the bonds between people and pets during these challenging times. The accompanying list recognizes donations received from January 1, 2021-December 31, 2021.



Communications Director Jessica Gercke and Communications Manager, Fernanda Lopez on assignment.

## TELEVISION:

### FOX 5 NEWS TEAM:

Raoul Martinez  
Shally Zomorodi

### KFMB - CBS/CW CHANNEL 8/CHANNEL 6 NEWS TEAM:

Carlo Cecchetto  
Tiffany Frowiss  
Neda Iranpour  
Eric Kahnert  
Marcella Lee  
Jane Morton  
Kerri Lane  
Barbara Richards

### KGTV - ABC CHANNEL 10 NEWS TEAM:

Virginia Cha  
Megan Parry  
Jim Patton

### KUSI - CHANNEL 9 NEWS TEAM:

Elizabeth Alvarez	Hula Ramos
Jason Austell	Paul Rudy
Vince Douglas	Teresa Sardina
Ginger Jeffries	Dave Scott
Mark Mathis	Tommy Seblan
Kacey McKinnon	Hunter Sowards
Jenny Milkowski	Maria Villanueva
Francella Perez	Allie Wagner
Lauren Phinney	

## RADIO:

### MAGIC 92.5:

Jagger and Kristi  
Len Balistreri  
Samantha De Jesus

## NEWSPAPER/MAGAZINE/WEB:

### PEOPLE MAGAZINE/PETS:

Kelli Bender  
Kate Hogan

### RANCH AND COAST MAGAZINE:

Bob Stefanko  
Mia Stefanko

### SAN DIEGO UNION TRIBUNE:

Diane Bell  
Linda McIntosh

### COAST NEWS

### DEL MAR TIMES

### FAIRBANKS LIVING MAGAZINE

### INSIDE EDITION

### LA JOLLA LIGHT

### LA JOLLA VILLAGE NEWS

### NORTH COUNTY PUBLISHERS

### POMERADO NEWS

### RANCH LIVING MAGAZINE

### RANCHO SANTA FE REVIEW

### SAN DIEGO COMMUNITY NEWS GROUP

### SAN DIEGO FAMILY

### SAN DIEGO MAGAZINE

### THE PATCH

### THE VILLAGE NEWS

## HELEN WOODWARD ANIMAL CENTER 2021 DONORS

*This list represents individuals and organizations who gave a total of \$150 or more between January 1, 2021 and December 31, 2021.*

### BEQUEST GIFTS

*We are grateful to the individuals below who chose to leave a legacy of caring by including the Center in their estate plans. These gifts will help ensure the long-term stability of our programs so pets and people in need will continue to receive the help they need for many years ahead.*

Arthur Rossiter Estate  
Beatrice D Chance Trust  
Belina Lee Lazzar Trust  
Beverly Kirby/ Richard Kirby Revocable Trust  
Earl and V. Feldman  
Eleanor S. Rogers Trust  
Elizabeth A. Regan Trust  
Estate of Betty Kennedy  
Fowler Revocable Living Trust  
Gerald W. Fackler Charitable Remainder Trust  
Gillian D Wight Revocable Trust  
Goldberg Charitable Trust  
James Kuden Family Trust  
James Moore Estate  
John Edward Martin Trust  
Julie Adams Estate  
Kathleen C. Pickett Revocable Trust  
Kent Hauschulz Estate  
Lynda Reinhardt Trust  
Maria V. Russo Trust  
Marian A Olson Trust  
Marjorie E. Miller Living Trust  
McClellan Charitable Trust Fund  
Shafeeza and David Beckmann  
The Elizabeth A. Regan Trust  
The Gavin Family Trust  
The Gillian D Wight Revocable Trust  
The William H. Eberle Trust  
The Yates 2013 Trust  
Thelma Sue Tinsley Trust  
Vail Memorial Trust  
W. Don Roth and O. Jean Roth 2006 Revocable Trust  
William Edward Kuster December 15, 1995 Trust  
William Helmuth Gottwald Revocable Trust

### THE HELEN WOODWARD SOCIETY GOLD CIRCLE \$5,000+

Alex and Elisabeth Lewyt Charitable Trust  
Animals for Armed Forces Foundation  
Barbara Menard  
Bell Charitable Foundation

Betina LeVeau Zlotlow  
Beyster Family Foundation Fund IV at the San Diego Foundation  
Blue Buffalo Company, Ltd  
Bob Akins  
Brad and Sheila Jacobs  
Brenda & Dave Rickey Foundation  
Bridget Rose Foundation  
Bruce Kuecker  
Carlo and Nadine Daleo  
Carol Clark  
Carolyn Monkhouse  
Charity Fair Horse Show  
Clay MacLeod and Elizabeth Wohlford-MacLeod  
Confidence Foundation  
Dan Shea  
Dana and Kathy Collins  
David and Rebecca Vigil  
David Hart  
Dianne and John Lefferts  
Doctor Multimedia  
Donald G. Goodwin Family Foundation  
DSDS Lew Family Foundation Inc.  
Eco-Shell Inc. - Naturally Fresh Cat Litter  
EDCO Disposal Corporation  
Ellen Kohls Household  
Estate of Don Roth  
Feeding San Diego  
Felicitas Doucette and Alex Yakut  
Fetch Inc.  
Foley & Lardner  
Frank Subaru  
Frank Swayze  
Gary Broad Foundation  
Gwendolyn M. Sontheim and the Aqualia International Foundation LTD  
Harriet E. Pfleger Foundation  
Horizon Structures, LLC  
Humane Associates of Northern San Diego County  
In Honor of Diego  
James and Sally Cuff  
James Jacobs  
Jamie Carr  
Janet Molsberry  
Jed and Roberta Cohen  
Jeffrey Holtzman  
Jessica Lohr  
Jim Hooker & Portia Metras  
John and Leslie Bridgen  
John and Stacy Snyder  
Judith and Stanley Hoffberger Family Foundation  
Julie Adams Estate  
Julie Dixon  
June Ash  
Kahoot's Feed & Pet  
Kenneth and Katherine Shull  
Kevan Chu  
Kristin and Nick Ruscetta  
Laurel Foundation  
Leonard and Judy Lauder Fund  
Linda Brandes  
Lisa Herndon  
Lucky Duck Foundation  
Lynne Duke  
Maggie Wong

Margaret Arnone  
Marianne and Stephen Harmon  
Mary Curran  
Matthew and Alexandra Gerritsen  
Maxine Beige  
Michael and Debbie Coulter  
Myers Family Foundation  
Nancy Linck  
Next Left  
Oliver Costich and Blanca Perez  
Patrick and Stephanie Kilkenny  
Petco  
Ranch & Coast Magazine  
Rancho Santa Fe Foundation  
Reed Melhado Household  
Reggie White Household  
Richard and Janet Hunter  
Richard Schneider  
Robert Akins  
Robert Church and Catherine Bristow  
Robert Cotton  
Roberta Payne  
Rose Thiessen  
Ruthie Morganer  
Save This Life, Inc.  
Scott Gnau  
Sharon Bauche  
Sharron MacDonald  
Sommer Bergo  
Stephen Hay  
Steve & Sharron MacDonald Family Foundation  
Susan and Charlie Muha  
TD Mathewson  
The Alexander and Valerie Viterbi Fund of the Jewish Community Foundation  
The Halicioglu Family Foundation  
The Norbell Foundation  
The Selander Foundation  
Timothy and Claudia Pontier  
Una Davis  
Valerie Viterbi  
Wendy Clark  
Wendy McWethy  
Whitt Family Foundation  
Whittier Trust  
WWW Foundation

### THE HELEN WOODWARD SOCIETY SILVER CIRCLE \$2,500 - \$4,999

Amazon Smile Foundation  
Amy Rowland  
Balazs Family Giving Fund  
Biosero  
Brent and Tiffany Rathbun  
Bruce and Susan Hall  
California Bank and Trust  
Chris and Lisa Pedersen  
Courtney Cicourel  
David and Jo Ann Hall  
Dennis and Lucina Heipt  
Dianna Rudolph  
Embrace Pet Insurance

Erin Combs and Howard Pearl  
Fairbanks Ranch Country Club  
Fran and Jessica Gercke  
Gerald Schneeweis and Megan Wynne  
Gerry and Jeannie Ranglas  
Gisela Hill  
Hansen Surfboards, Inc.  
Henry Eimstad and Barbara Nolan  
Hyginix LLC  
Jacqueline Dewitte  
Jennifer Cieslak  
Jerry and Keiko Schneider  
Jerry Case  
Jill Hunter Hensley  
Joan Randall  
Joe and Terri Davis  
John and Kerry Payne  
John Brown  
Judith Bauer  
Kaitlyn Murphy  
Kirk Scrima  
La Jolla Country Day School  
Leo and Emma Zuckerman  
Lianne Chu  
Linda and Glen Freiberg  
Martin and Carol Dickinson  
Michael Gilbert  
Mike Coulter  
Mike Galardi  
Mindy and Ira Schwartz  
Nick and Pamela Omid  
Nth Generation Computing INC.  
Olaplex  
Oxford  
Pacific Pipeline Supply  
Peggy Lewis  
Pierce Education Properties  
Randy and Nancy Wolman  
Ray Fluta  
Robert and Paula Traber  
Rong Xu  
Scott Ziobron  
SCS Engineers  
Sharla Myers  
Singh Family Foundation  
Steve Buhr  
Susan Morse  
Susan Richardson  
Tammy Smith  
Tange Gavin  
Tim, Coeann and Cheradyn Pettit  
US Bank  
William and Joyce Biffar  
William and Linda Gabriel  
Willis Allen Real Estate

### THE HELEN WOODWARD SOCIETY BRONZE CIRCLE \$1,000 - \$2,499

Adam and William Canter  
Adrian and Betsy McKibbin  
Alexa Withrow  
Alexi Davis Perez and Leo Perez  
Allen Family Foundation, INC

Amersand Capital Partners  
Andrew and Deborah Wasa  
Anne Fletcher  
Anthony Castagnola  
April Teitelbaum  
Aqua Adventures, Inc.  
Asset Preservation Strategies, Inc.  
Baron's Market  
Bill and Gloria Coleman  
Bill and Janice Ward  
Bill and Sheila Waxman  
Bobrow/Tanabe Family Charitable Fund  
Boehringer Ingelheim Animal Health USA Inc.  
Bradley and Susan Adams  
Brent Wakefield  
Brian and Silvija Devine  
Brian Dyck and Patricia Gladstone  
Brookstein Family Philanthropic Fund  
Bruce Furtado  
Bulova Gale Foundation  
Carmen Jack  
Carol Ann Millard  
Carol Towne  
Chance White  
Chargers LLC  
Charles Nak and Connie Crotty  
Charles Prettyman  
Cheryl Morris  
Christina Spannos  
Christine Nespor  
Chuck Mitchell  
Cindy and Joe Polujanczewicz  
Constance Palmieri  
Cornelis Rijnbrand  
Cynthia Long  
Cynthia Staley Charitable Fund  
Dan Gayet  
Daniel and Linda Brown  
Daniel and Robin Crabtree  
Daniel Hof  
Darcy and Robert Bingham Fund C/O The San Diego Foundation  
Darlene Fujimoto  
Dave and Brenda Rickey  
David & Vera Nelson  
David and Janice Mullin  
David and Rose Dishman  
David Benson  
David Paul  
Deanne Witt  
Dennis Bradley  
Don and Connie Horn  
Douglas and Christine Evans  
Duane Chernow  
Earl and V. Feldman  
Elizabeth Sanchez  
Ellie Thomas  
Emily Shults  
Eric Shirley  
Fay Bullitt  
Frank and Linda Riolo  
Frederik Defesche  
Gayland Smith  
Gayle Miller  
George and Andrea Kessel  
George and Gillian Percy

George and Janice Muller Charitable Fund  
George Howard  
Gifts of Nature, Inc.  
Gil and Karen Armour  
Glenna Vaskelis  
Green Flash Brewing Company  
Greg and Cathy Berry  
Greg Pryor  
Hatter, Williams & Purdy Insurance  
Henderson, Caverly, Pum & Trytten LLP  
HES solar  
Howard and Toby Cohen  
Irene Callison  
Isaac Kousari  
Jack and Sandra Carey  
James and Marissa Gregory  
James and Mary Ann Nese  
James and Susan Foley  
James Frank  
James Hill  
James Moore  
Jason Brown  
Jeanne Bates  
Jeffery Elden  
Jeffrey and Sandra Schafer  
Jenn Mendez  
Jennifer Pieratt  
Jennings Charitable Fund of Schwab Charitable  
Jerome Navarra  
Jill Schultz  
Jim and Gretchen Simpson  
Jim and Sarah Sleeper  
John and Karen Sanders  
John Barbour  
John Berumen  
John Garcia  
Jon and Karen Dougherty  
Jonathan and Dawn Doering  
Joseph Baksh  
Joshua and Marette DeJong  
Joshua Smith  
Joy Milus  
Julia DalPezzo and Sophie and Chloe Thompson  
Julie Fernandez  
Karen Black  
Karen Gee  
Karen Vold  
Kathleen Sweeney  
Ken A Rosevear  
Kenneth Stephani  
Kevin Waters  
Koji and Minako Kimura  
Kroger  
Laura Goodman  
Leslie Pembroke  
Linda and Shelby Easler  
Linda Oakley  
Linda Rahn  
Lisa McAfee  
Lisa Mortenson  
Lynda Wilson  
Lynn Bailey  
Lynne and William Denby  
Mano Howard  
Margaret Barrett  
Maria Walker  
Maria Wendling  
Marianne Sanders

Marilyn Quon  
Marshall Rugg and Lisa Lightfoot  
Mary Frey  
Matthew Ruggiero  
Michael and Miriam Haughey  
Monica Szakos  
Morgan Stanley Gift Fund  
Ms. Katherine Nowak  
Murray Hougen  
Nader Ebeid  
National Philanthropic Trust: EMCAT Giving Fund  
Nazer Abdelfattah  
Nicole and Kevin Korb  
Orrin Gabsch  
Pamela Bell  
Paul Schroeder  
Pauline Noel  
Pecoraro, Inc.  
Peter and Angela Dal Pezzo  
Philip and Joan Brady  
Phillip Harris, Kathleen Jones and Phyllis Harris  
Premier Stainless Systems, LLC  
Rachel Phillips  
Raymond and Betty Crupi  
Reese Sexton  
Richard and Susan Stewart  
Richard Cohen  
Rick Wise  
Rob and Alex Kutty  
Robert and Lois Gill Family Charitable Fund  
Romaine Sullivan  
Russel Charles Briggs Teel  
Ruth and Keith Parnell  
Ryan Mallen  
Ryan Schulze  
Rylan Sigdestad  
Sandra Wawrytko  
Sarah Price-Keating Fund of the Jewish Community Foundation  
Sarah Robinson  
Scott Perry  
Seaworld San Diego  
Shannon and Steven Diener  
Shirley Owen  
Snooze Del Mar  
Stacey Schmolke  
Susan Dube  
Sycuan Casino Resort  
Tamim Hamid  
The Maren Christensen and William Welch Fund of the Christensen Family Foundation  
The Padgett Charitable Giving fund of SEI Giving Fund  
The Paula B. and Oliver W. Jones Family Foundation Inc.  
The Thunder Chicken Foundation  
The Ursula Alletag Fund of the Jewish Community Foundation  
Thomas and Donna Golich  
Thomas and Susan Cordell  
Thomas Carr  
Thomas Smith  
Tiffany Scarborough  
Toni Bevan  
Toni Nickell  
Trusted Housesitters  
UBS Financial Services Inc.  
Uncle Scott's Elite House & Pet Sitting  
Urban Legends Entertainment, Inc.  
Vladimir Zingerov

Wanda Sanders  
Wayne McDowell  
WD-40 Company  
Wendell and Laura Kishaba  
Wesley and Lyn Hoffmaster  
Whitney Bowers  
William Bondshu  
William Leahy  
Winder-Steed Fund for Positive Change

## THE LOYAL COMPANIONS \$500 - \$999

A.C.L. Robbins Family Charitable Fund  
Alexa Smith  
Alice Correll  
Alison Celis  
Allegra Manacher and Curt Kohlberg  
Allen and Debra Briski  
Amanda Breneman  
Angela Levin  
Anna Mills  
Anthony Kolar  
Anthony Medina  
April Pasko  
Arthur and Joanne Watson  
Arthur Leasure  
Athena Constant  
Audrey Reisenauer  
Barbara Antonopoulos  
Barbara Brunelli  
Barbara Finn  
Barbara Leon  
Barry and Emily Berkov  
Bay Equity LLC  
Benjamin Blakley  
Bill and Teresa Chen  
Brandie Marone  
Brett Carter  
Brett Everhart  
Brigitta Price  
Bruce and Cynthia Knowlton  
Bryan Foy  
Candi Abeyta  
Candy Leone  
Carlyn Sager  
Carol Grossi  
Carol Mutter  
Carole Nese  
Caroline McGrath  
Carolyn and Gordan Walker  
Carolyn Craig  
Cathy Paulsen  
Cecile Holmes  
Charlotte Quincey  
Cheryl Sykes  
Christine Huntting  
Christopher Severson  
Clairemont Cares  
Clayton Hargraves  
Combined Federal Campaign  
Corina Harrington  
Craig and Janet Munson  
Craig Myrom  
Cynthia Reiss  
Cynthia Staley  
Dan Stephen  
Daniel and Erica Ingle  
Daniel and Nicole Roberts

Daniel Olson  
Daniel Smith  
Darren Levack  
David and Sherry Hendrickson  
David and Susan Frant  
David Favreau  
David McGuinness  
Deann Zellmann  
Debbie and Jack Griffith  
Deborah Rauscher  
Debra Vella  
Denby Family Foundation  
Dennis and Karen Patterson  
Dennis McConnell  
Diana Hildebrand  
Diana Miller  
Dianne Miller  
Dion Long  
Don Hutchison  
Don Susral  
Donna and Sandra Willard  
Donna Purviance  
Douglas and Linda Rose  
Douglas and Susan Gilman  
Dustin Jones  
Ed Hanley  
Ed Orenstein  
Edward and Chen Lun Pun  
Eileen Konicki  
Elizabeth Levey  
Ellis Family Foundation  
Emil Tsaturov  
Emily Murray  
Eric G Vajda  
Erik and Alyssa Bayus  
Erin van noort  
Estelle Silverstein  
Eve Jaffe  
F. Y. Spears  
Fairbanks Living Magazine  
Frank Connaghan  
Frederick and Kathleen Potts  
Fredericka Iwatsu  
Gary and Denise David  
Gary and Louise Nobel  
Gayle Loranger Rose  
George and Patsy Leopold  
Gerald and Patricia Johnson  
Gertraud Fischer  
Gina Purlia Johnson  
Ginger Beriones  
Glenda Rothberg  
Gurdon Hornor  
Helena Parker  
Henry Armstrong  
Howard and Jo Weiner  
Jack and Louise Strecker  
Jacquie Woods  
James Hansen  
James Kozen  
James Nolan  
Janet Peterson  
Janet TrentaCosta  
Janice King  
Janice MacGurn  
Janice Wallace  
Jeff and Ann Skinner  
Jeff Watts  
Jeffrey Reynolds  
Jennifer Batt  
Jennifer Nagtalon

Jeraldine Hartson  
Jill Adachi  
Jill Sumner  
Jim Beyster  
Joan Noble  
Joe Orenstein  
Joe Patino  
Johanne Berg  
John Lilley and Mary Lu Sanfelippo  
John Bailey  
John Kesser  
Johnston Family Charitable Fund  
Jon Covell and Karin Hughes  
Jonas Salomon  
Joseph Harrigan  
Joshua's Pest Control  
Joyce Kapsal  
Judith Gallegos  
Judy Daniels  
Judy Whitney  
Julie and Brendan Blockowicz  
Julie Dunlap  
Justin and Linette Lyles  
Karen Campbell  
Karen Laib  
Karen Wang and Jason Lo  
Kari Knowles  
Katherine Kimball  
Katherine Nowak  
Katherine Richman  
Kathi Schneider  
Kathleen Kilbourne  
Kathy Biedenbach  
Kay Yim  
Kenneth and Charlotte Fortier Foundation  
Kentucky Gallahue  
Kerry King  
Kerry McLean  
Kevin and Sandra Hutton  
Kevin Herde  
Kim Miller  
Kimberly Travaglia  
Kirk and Debra Crawford  
Kris Cervantes  
Kristen Caverly  
Kristin Nadir  
Laurel Plagge  
Leon Wong  
Leslie Krymer  
Lillian and Mark Banchik  
Linda Blinkenberg  
Linda Kelley  
Linda Koligman  
Linda Small  
Lisa Caralli  
Lois Lippold  
Lori Bradley  
Louis and Gordie Zimm  
Luis Figuracion  
Lynn Goldberg  
Madelyn Bennett and Eric Gibson  
Marc Romero  
Margaret Reese  
Margaret Shoemaker  
Marie O'Connor  
Mark and Kristi Jagger  
Mark and Marianne Hoffman  
Mark Spencer  
Marsh & McLennan Insurance Agency

Marsha Lewin  
Martha Duncan  
Martin Walker  
Marty and Robyn Holmquist  
Mary Cuzens  
Mary Nguyen  
Maureen Townsend  
Maytha Shaffer  
Melissa Veghte  
Michael and Marie Huff  
Michael and Melissa Bartell  
Michael Bernal  
Michael Klinkert  
Michael McCartney  
Michael Noblit  
Michael Stribling  
Ming-Chang Tsai  
Mitzi Lobelson  
Nancy Thompson  
Nancy Unfried  
Navjot Rai  
Network For Good  
New Haven Youth & Family Services INC.  
Nina Smoley  
Norma Schwab  
Orly Benaroch Light  
Oscar Paredes  
Patricia Catalina  
Patricia Jakes  
Patricia Jensen  
Patricia Mudgett  
Patricia Trimble  
Patrick and Danielle McCay  
Paul Spafford  
Peter Grogan  
Peter Hill  
Peter Kuey  
Peter Presley  
Phil and Kathy Henry  
Phillips and Laura Huffman Fund  
Phyllis Sarkaria  
Pincus Family Fund  
Poway Veterans Organization  
Rama Subramanian  
Randall Bird  
Rena Lewis  
Richard and Carol Leiby Charitable Gift Fund  
Richard and Denise Kerns  
Richard Cieri  
Richard Feferman and Stacey Fulhorst  
Rick and Jill Votaw  
Rita Truderung  
Robert and Diana Ruark  
Robert Bogart  
Robin Fried  
Rodney and Anne Cressey  
Ronald F Doty  
Rooney Fund  
RuSty and Carol Weeks  
Ruth Meehl  
Sally Phillips  
Sam and Lilia Garcia  
Sandi and Mark Bradt  
Sandy Crays  
Scott Cook  
Scott Munro  
Sharon Christofferson  
Sharon McEwen  
Shawna Cloward

Shelley DeAngelis  
Shirlee McDaniels  
Shirlee Reinhart  
Southern Marriage Counseling Inc.  
Stephen Hamill  
Steve and Bambi Schulman  
Steve Millendorf  
Stewart Title Foundation  
Susan and Peter Lee Tancredi  
Susan Ellisor  
Susan Grossinger  
Susan Lord  
Suzanne Cairo  
Swati and Deepak Dalvie  
Tamarindo Del Mar  
TD Ameritrade Clearing  
Ted Merrill  
Teresa Gray-Simas  
The Hering Family Fund  
Theresa Accero  
Theresa Brown  
Thomas Davis  
Timothy Dillon  
Timothy Ranker  
Tina McDonald  
Tina Sheen  
United Way of San Diego County  
Valerie Thatcher  
Verona Vernon  
Vicki Wallshein  
Vickie Wolf  
Virginia Lake  
Vivan Hardage  
Walter Gajewski  
Wanda Blount  
Wanda Holmes-Delopst  
William Halsey  
William Presley  
William Roche and Andrea Clouser-Roche  
William Whaley  
Yvette and Richard Roberts

## THE FAITHFUL FRIENDS \$250 - \$499

AC Notestine  
Alchera Ayyad  
Alex and Nancy Frieauf  
Alexander Smith  
Alexandra Hubenko  
Alexia Anas  
Alice Rigg  
Alison Quattrocchi  
Allison Hill  
Amber J Camblin  
Amy Miller  
Amy Swindle  
Amy Wazny  
Andrea Hill  
Andrew and Barbara Fahy  
Andrew Walcher  
Angie and Joel Basore  
Anita Diaz  
Anitra Glover  
Ann Evans  
Anne and Samantha Edwards  
Anne Hammes  
Anne Leys Munoz  
Anthony and Deann Yoshida

Antoinette Monaco  
April Frost  
Arm Energy Management, LLC  
Arthur Meyer  
Ashley Duncan  
ASSETMARK Trust Company  
August and Karen Carniglia  
Babette A Henderson  
Barbara Cavanah  
Barbara Cecchin  
Barbara Lewis  
Barbara Reynolds  
Barry and Jennifer Greenberg  
Benjamin Schwartz  
Bernard Scalan  
Bernice Livolsi  
Bette Page  
Betty Davis  
Betty Stiller  
Beverly Christensen  
Beverly Daedone  
Beverly Emerson  
Beverly Noonan  
Bill and Cathy Webster  
Blake and Kileen Sturgis  
BNY Mellon Trust of Delaware  
Brent Cottom  
Brent Wessel  
Brian Cohen  
Brian Welge  
Brian Wynne and Diane Carmody Wynne  
Brooke Kim  
C.A. and Sharon Dunn  
Candace McFeely  
Candace Souleles-Lipisko  
Carmen Moi  
Carol and Patrick Tellez  
Carol Baldwin  
Carol Hickman  
Carol L Plantamura and Felix Prael  
Carol Miller  
Carole Manges  
Carolynn Grant  
Catherine Steier  
Chad Taylor  
Cheryl Prince and Alan Wood  
Chester and Janice Willis  
Chris Uchida  
Christi Hoover  
Christina Gibson  
Christina Orabona  
Christine Hayek  
Christopher Barry  
Cindra Opalsky  
Cindra Opalsky  
Cindy Bludau  
Clifton Bobb  
Colleen Campbell  
Connie Page  
Corinne Wilson  
Craig and Meredith Garner  
Cynthia Jones  
Cynthia Lawrence  
Cynthia Paulas  
Dale Pering  
Daniel DiCesare  
Darcy Bingham  
Darryl Watson and Diane Edenfield  
David and Catherine Leung  
David Ballinger  
David Brooks

David Klimkiewicz  
David Snodgrass  
David Zapalo  
Dawn and Mark Sgarbossa  
Dean and Marcia Morris  
Debara Medina  
Debbie Bowders  
Debbie Lehman  
Debi Kammerer  
Deborah Cardarelli  
Deborah Davis  
Deborah Greenberg  
Debra Capozzoli  
Denise Churchill  
Denise Ellard  
Dennis and Leigh Ann Naas  
Devin Braun  
Don and Peggy Robertson  
Don and Robin Rady  
Donna Garcia  
Donna J Rosemier  
Donna Kiley  
Donna Sandsmark  
Douglas and Joann AuStin  
Douglas Wescott  
Dr. Bronner's  
DynAdmic Corp  
Edward and Susan Glassett Farrelly  
Edward Hand  
Edwin Nomura  
Edythe Baker  
Eileen Levow  
Eleanore Hewitt  
Elizabeth Andrews  
Ellen McCready  
Emiliano and Martina Pasillas  
Emily and Joyce Anderson  
Emily K Pauli  
Enid Mac Lowry  
Eric Pilmore  
Erika Kan  
Eugene and Lily Van Vleet  
Eugene Prokopenko  
Evelyn Ramirez  
Evergate Stables  
Fabio Fossati  
Francine Frasier  
Francine McClure  
Fritz Brun  
Gail C Hutton  
Gale Fajardo  
Gayathri Gokulnathan  
Gayle Wells  
Gerald and Bozier Demaree  
Gerald O'Mara  
Gerald Young and Robert Leon  
Gil and Mary Ann Lanes  
Girl Scout Troop 3212  
Gloria and Bob Wright  
Grace Jo  
Greg Danenhauer  
Gregory and Karen Wolting  
Gregory Merten  
Greta Deane  
Happi Canine  
Harold Renfro  
Heather Durham  
Heinzinger/Pfann Family Foundation  
Holly Hidering  
Howard Chu

Ian Linekin  
Ian Withall  
Jacqueline Welch  
Jake and Ann Nyberg  
James Burns  
James Gonzales  
James Hill  
James McCaskey  
James Minton  
James Webb  
Janean Tsuda  
Janel Martinez  
Janet Tait  
Janis Goldstein  
Jasmine Lee  
Jeff and Agnes Markin  
Jen Hillman  
Jennifer Bolanis-Rogers  
Jennifer Davies  
Jennifer Main  
Jerilyn Jones  
Jill Davis-Prickett  
Jill Olen  
Jill Wolcott  
Jim and Joyce Morris  
Jim and Pam Kidwell  
Jim Caputo  
Joan Decherrie  
Joan Gehr  
Joan O'Connell  
Joan Williams  
Joann Flaim and Megan Bradley  
Joanna Paul  
Jocelyn McGrath  
John Alderson  
John and Laura Davis  
John Earl  
John Gaillard  
John Lipinski  
John Moorhouse  
John Price  
John Schmit  
Jon Kapsis  
Joni Kirk  
Joyce Welch  
Judd Hoffman and Katie Sweet  
Judith Crowley  
Judith Hodgkinson  
Juergen Stark  
Julia Nussbacher  
Julian and Gale Stienon  
Julie McCoy  
Julie Yee  
Jurgen Menzel  
Kaaren Bergquist  
Kaitlin Thomas  
Kan Chen  
Karen and Tim Ranker  
Karen Renberg  
Karen Siroky  
Kate Deering  
Kate Snider  
Katelyn Cloherty  
Katherine Cormier  
Katherine Kaufmann  
Katherine Lazzaro  
Kathleen Rae  
Kathryn and William Warehall  
Kathryn Angell  
Kathy and Kieran Sweeney  
Kathy Giovanni

Katie Gordon  
Katja Lange  
Kay Patterson  
Kelly Deveney  
Kendra Scott Jewelry  
Kevin McCowen  
Kimberly Murphy  
Kitty Wolcott  
Kymberly Wilson  
Lanette Dudley  
Larry and Sarah Morford  
Larry Verity  
Laura Goodman  
Lauren Freeman  
Lauren Rogers  
Lawrence and Judy Belinsky  
Lawrence Lokman  
Leslie Giroux  
Linda Heald  
Linda Jean Fraley  
Lisa Bosstick  
Lisa Field  
Lisa Khoury  
Lisa Lepre  
Lisa Moraglia  
LocanaBio  
Lois and Martin Ehrlich  
Lois Ruble  
Loretta Sconce  
Lori Hinkelman  
Lori Isaacson  
Louis and Randi Masotti  
Louise Branch  
Lynette and Walter Grunenberg  
Lynne Smith  
Malcolm and Naomi Barksdale  
Manning Charitable Fund  
Marcia Green  
Margo A. Sommerfeld  
Mari Mahan  
Maria Bekkelman  
Maria Duggins  
Maria Luisa Garcia Perez  
Maria Rivera  
Marie Carlisle  
Marilee Gigler  
Marilyn Glatly  
Marilyn Herde  
Marilyn Jones  
Mark and Brooke McDonald  
Mark Luque  
Marlene Mitchell  
Mary Clarke  
Mary Hobson  
Mary Kirk  
Mary Parriott  
Mary Suzanne and Alexandra Gruber  
Maryann T. Rush  
Maureen McBreen  
Maurice Murray and Siriporn McGillivray  
Megan and Sri Pinnamaneni  
Melanie Aiona  
Melody Ross  
Michael Anderson  
Michael and Carol Arms  
Michael Kamb  
Michael Lyons  
Michael Taggart and Vivian Jonas-Taggart  
Michael Yablun

Michele Fox  
Michelle Bloch  
Michelle Longtin  
Michelle O'Connell  
Millie Liles  
Miriam and Merton Pennock  
Miriam Kastner  
Miruna Ticrea  
Mitchell Harris  
Mordy and Elizabeth Levine  
Mr. Edward Quinn and Mrs. Nancy Quinn  
Murrilean McIntosh  
Nancy Barnhart  
Nancy Jones  
Nancy Paulsen  
Nancy Procsal  
Nancy Shea  
Natalie Fletterick  
Nathan and Yamia Benhaim  
NaturopathicRx  
Nicole Carr  
Nicole Fortunato  
Nicole Nakagawa-Rafter  
Nikki Carmody Ream  
Norma Cooper  
Ocean Hills Kennel Club  
Padres Foundation  
Palleon Pharmaceuticals  
Palmyra Raggio  
Pam Fair and Glen Sullivan  
Pam Lucado  
Patricia A Berry  
Patricia and Cindy King  
Patricia Hoffman  
Patricia Lutgen  
Patricia O'Quill  
Patricia Rogers  
Patricia Sorenson  
Patrick Fuller  
Patrick Park  
Patti Peterson  
Patti Roscoe  
Patty Chang  
Paul Frank  
Paul Hammon  
Paul, Manilath and Rita Sithideth  
Paula Boyd  
Pavla Nygaard  
Pearl Daniels  
Peggy Cross  
Peggy Swearingen  
Penelope Piskor  
Penny Everett  
Peter and Jessica Pawlowski  
Peter Leets  
Peter Nalley  
Peter Pizzani  
Phillip and Linda Brown  
Phyllis Sakaria  
Priya Bendale  
Qualcomm  
Randall Martin  
Raquel Svennebjør  
Realty Income Corporation  
Reid Westburg  
Renee & Stanley Siegel  
Renee and Allen Tepper  
Richard and Beverly Kerns  
Richard and Susan Colbourne  
Richard Crane and Marilyn Deming

Robert and Cheryl Gordon  
Robert Papera  
Robert Rosi  
Robert Schlesinger  
Robert Schraner  
Robin B Luby  
Robin Thomas  
Rodger Smith  
Ron and Annie Watkins  
Ron Chapman  
Ron Sill  
Rory Vinci  
Roy and Nancy Tophigh  
Sally Cansdale  
Sandra Hudson  
Sandra Lee  
Saori Okubo  
Sarah Weller  
Scott Beekman  
Scott Walls  
Sean and Erica Gadbois  
Sharla Jensen  
Sharn Sexton  
Sharon Hathaway  
Sharon Metz  
Sheena Renfro  
Shelly Skinner  
Sheri and Art Armendariz  
Sherry Shriver  
Stephanie Parisi  
Stephens Family Charitable Gift Fund  
Steve and Lynne Wheeler  
Steve and Tammy Donly  
Steve Redfearn  
Steven and Carolyn Gates  
Steven and Sharon Elggren  
Steven J. Adler  
Steven Ratner  
Summanther Kaviratne  
Summer Dunsmore  
Susan Berman  
Susan Elder  
Susan Hector  
Susan Karlan  
Susan Mason  
Susan Slaght  
Susan Wackerman  
Susan Winbigler  
Susanna Gan  
Suzanne Davis  
Suzy Soo  
Sylvia Johnson  
Tamar Diana Wilson  
Teena Hostovich  
Terence and Arlene Rush  
Teresa Sattler  
Teri Hill  
Terri Quenzer  
Terry Fleischman  
The Resko Family  
Theresa Pappas  
Thomas Farrell  
Thomas Rendine  
Thrivent  
Todd Wilson  
Tom Story  
Tracy Cunningham  
Tracy Wall  
Tracy Young  
Tyler McQuillan

Ursula Carl  
Veronica Leff  
Vickie Wolfe  
Victoria Mitchell  
Victoria Rosker  
Vien Truong  
Vilma Drever  
Vipin Menon  
Virginia Rudden  
Wags Away  
Wendy and Keith Higashi  
William and Connie McNally  
William and Diane Bergman  
William and Janet Fisher  
William and Norah Wolff  
William Johnson and Diane L'Esperance  
William Wieber  
Yolanda Alcaraz

## THE BEST FRIENDS \$150 - \$249

Ahmad Hashmi  
Al Maroni  
Alan Jacobson  
Alanna Hewins  
Alex Crandall  
Alicia M. Annas  
Allen Beddoe  
Allen Cochran  
Amy Berguson  
Amy McCall  
Ana Morataya  
Andrew Melissinos  
Andy Van Die  
Anita Gholson  
Ann Buchanan  
Annette Schliffe  
AnnMarie Krok  
Antonia Shtereva  
Archit Tandon  
Arlene Schafer  
Arturo Romero  
Ashima Shukla  
Ashley Madigan  
Aurie Knicker  
Avery Gottlieb  
Aya Uehara  
Barbara Brown  
Barbara Corrales  
Barbara Frazee  
Barbara Pukis  
Beth Barber  
Bill Townsend  
Billie and Joe Orechovesky  
Billie Poehls  
Bob and Jan Fuchs  
Bonnie Saichuk Lebovits  
Bonnie Wright  
Braby Family Charitable Fund  
Brenda Higgins  
Brent and Allison Elliott  
Brian Harris  
Brian McCullough  
Brie Deadman  
Brooks Townsend  
Bruce Foltz  
C. Dangler  
C. Larry Davis  
Camille Hilmer  
Carl and Marie Metzgar  
Carla Hayes  
Carlos Tomaszewski  
Carmen and Frank Fernandez  
Carol Penner  
Carol Quidort  
Carole Higashi  
Carolyn Demaray  
Carolyn Glazner  
Carolyn Sullivan  
Catherine Tse  
Cesar Calma  
Charles and Christie Dunning  
Charles Wolfe  
Charlie and Kori Karstrom  
Charlotte Hicks  
Chris and Lisa Kotitsa  
Chris Brunnquell  
Chris Tomlin  
Christina Oswald  
Christine Sherrod  
Cindy Dabney  
Cindy Williams  
Clark Burlingame  
Clifford and Pamela Surko  
Conni Nelson  
Connie McMeans  
Cori Herold  
Coromega  
Craig Arterburn  
Curt Mack and Darrell Leetham  
Cynthia Cameron  
Cynthia Isaacs  
Cynthia Pearson  
D C Archer  
Dale Beed  
Daniel Molina  
Danielle Luciano  
Dave and Suzanne Dohren  
David and Brenda Lee  
David and Cecilia Anspach  
David and Cynthia West  
David O'Boyle  
Dawn Mentz  
Dean McCall  
Deanna Mortensen  
Debbie Hall  
Debby Kirkwood  
Debby Sweeney  
Deborah and Muriel Lee  
Deborah Farrington  
Deborah Mandabach  
Deborah McKinnie  
Deborah Mulera  
Deborah Olson  
Denver Tatoy  
DEPCOM Power  
Derek Gilbert  
Diana Owens  
Diane Romero  
Diane Thompson  
Dog is Good  
Dolores Hayes  
Donald Santamaria  
Donna Deapen  
Donna McAlliSter  
Donna Stark  
Dorothy Catone  
Dorothy Rischeberger  
Douglas and Debbie Alspach  
Douglas and Judith Bradt  
Douglas Huffor

Edgar and Isolde Parrey  
Edward and Marylee Muns  
Edward Richard  
Eileen Skaletsky  
Elaine Richards  
Elfie Fasching  
Elizabeth Felton  
Elizabeth Reid  
Elizabeth Showalter  
Ellen Mitgang  
Emily, David and Alyson Evans  
Emma Hom  
Eric Sher  
Erick Rivero  
Estel Hays  
Esther Weisel  
Eugene and Barbara Kading  
Flavio Fabbrini  
Frances McKelvey  
Francesca Castiglione  
Frank and Harriet Benson  
Frank Holbrook  
Franz and Jenny Grutzeck  
Fred and Kathleen White  
Fred and Wendy Shahan  
Fred Bertheas  
Frederick and Lori Adams  
Gail Thompson  
Gary and Diana Taul  
Gary Lovely  
Gary Marsh  
Gary Nittoly  
Gary Toomer  
Gaye Macy  
Geoffrey Miller and Karen Haubrich  
George Pecoraro  
Gerry Valin  
Gina L. Bellisario  
Glenn and Jeanette Goodrich  
Glenn Ditzenberger  
Gregory and Betty Evans  
Hal Wilson  
Hannah Jarson  
Hayes Anderson  
Heidi Kenney  
Herb Elgie  
Holly Wilkens  
Iliana Evstatieva  
Ingrid Stahr  
Irene Dente  
Jack and Miriam Breyer  
Jacqueline Hart  
James and Cheryl Peace  
James and Joan Cook  
James Browning  
James Folise  
James Gersonde  
James Hill  
James Wyman  
Jamie Peters and Duncan Seffern  
Jan Neels  
Jane Alshuler  
Jane Krekorian  
Jane Smith  
Jane Vickers  
Janet Blue  
Janet Caulk  
Janet Taipale  
Janice Rice  
Jasmine Chow

Jeannie Stefanski  
Jennifer Dyer  
Jennifer Loran  
Jennifer Quayle  
Jennifer Smith  
Jenny Parker  
Jeremy Morris  
Jill Salvati  
Jillian Dolin  
Joan Perkolup  
Joanne Stephens  
Johanna Westerman  
John and Ann Cotter Charity Fund  
John and Valerie Richardson  
John Concialdi  
John Gildner  
John Matson  
John Rekettye  
John Stewart  
John Vitrano  
John Zachry  
Jon, Amy and Julia Kapsis  
Jonnie Hoffman  
Joseph Kitzman  
Joyce and George Covello  
Joyce Padleschat  
Joyce Tolson  
Judith Iverson  
Judy Mattingly and Catherine Turner  
Judy Strattan  
June Kubo  
K Mamidipudi  
Karen Meinke  
Karen Petrie  
Karen Truax  
Karen Wiley  
Kari Caldwell  
Kate Baer  
Kate O'Shea  
Katherine Ballinger  
Katherine Payne  
Kathleen Buchan  
Kathleen Cashman-Kramer  
Kathleen Esqueda  
Kathleen Mitton  
Kathleen Secan  
Kelleen Green  
Kelly Ball  
Ken and Karen Cohen  
Kendra French-Noack and Howard Noack  
Kenneth Joy  
Kevin Bommarito  
Kim White  
Kimberlee Rowe  
Kimberly Coody  
Kristen Sondag  
Lana Matsuo  
Lara Pollock  
Larry and Sharon Slofkosky  
Larry Gohlke  
Leigh Boerner  
Lian Christofer  
Liane Leist  
Lille Shackley  
Linda and Kyle Crawford  
Linda Arizaga  
Linda Barkhoff  
Linda Grimes  
Linda Hodges  
Linda Mendoza

Linda Morgan  
Linda Pequegnat  
Linda Sekishiro  
Linda Winkler  
Lisa Coombs  
Loan Pham  
Lori Brenckman  
Lori Broderick  
Louise Hofherr  
Louise Zettner  
Loyce Bruce  
Luanne Williams  
Lynn Cody  
Lynn Dolby  
Lynne Pelzek  
Lynnell Hallock  
MaDeleine Alper  
Mamie Chinn Hechter  
Marc Engelhardt  
Marcy Mackless  
Margaret Crockett  
Margaret Varshock  
Mariam Malik  
Marianne McDonald  
Marilyn Hutcheson  
Marina Martin  
Mark and Hanna Gleiberman  
Mark and Maureen Strohmam  
Martha Mendez  
Martin Hardy  
Mary Ann Tilotta  
Mary Brucker  
Mary Doan  
Mary Ellen Pfleeeger  
Mary O Greenberg  
Masumi Wilbur  
Matt Stepanski  
Matthew Handfelt  
McKenzie Redfern  
Meg Louise Terry  
Megan Harpold  
Melany Vaughn  
MelAvel Robertson  
Melinda Luthin  
Melissa Alvarado  
Melissa Schmidt  
Meredith Schreiber  
Meri Lynn Rheinschmidt  
Michael Midgley  
Michel Napolitano  
Michel Schade  
Michele Smith  
Michelle Albee  
Mike and Joan Armstrong  
Mike Pennington  
Mikiko Kaishita  
Mindy Kezis  
Monica Olmos  
Nadia Ayadi and Michael Winslow  
Nancy Daly  
Nancy Duitch  
Nancy Gordon  
Nancy Hanlon  
Nancy Hawley  
Nancy Pegels  
Nancy Vaughn  
Naomi Williams  
Natalia Ponomareva  
Neal Oyama  
Ned Krumrey and Susan Farrell  
Nicole and Ed Jeleniowski

Ninad Tipnis  
Noriko Adcock  
Parada Painting  
Patria Danielson  
Patricia Berry  
Patricia Burns  
Patricia Cornelius  
Patricia Keogh  
Patricia Thompson  
Patricia Vitanza  
Patricia Walter  
Patrick Dugan  
Paula Dunn  
Paula Tilley  
Penelope Long  
Pete and Mary Smith  
Pete Ward  
Phyllis Andrese  
Puplid  
Rachel Haines  
Rachel Torrealba  
Radm Thomas and Marilynn Cassidy  
Ralph Staples  
Randall Tweed  
Randy and Kathy Ehrle  
Randy Roscoe  
Rebecca Quiring  
Rebecca Robar  
Richard and Beatrice Rotzow  
Richard Padgett  
Ricky Nozaki  
Robert and Sharon Ottaviano  
Robert Kellison  
Roberta Bush  
Roberta Pessah  
Robin Cohen  
Robin Stalians  
Rolf Schild  
Ron and Barbara Stolle  
Ronald Abernathy  
Ronald and Marilyn Palermo  
Ronald and Pamela McNutt  
Ronald Jones  
Ronald Kilzer  
Rosanne Stogner  
Rose M Benalcazar  
Rose Starr  
Russ Nixon and Jocelyn Lo  
Russell and Marsha Dudley  
Sally Ann McLean  
Sally Murphy  
Santee Clark  
Sandra Turner  
Sarah Green  
Sarah Morris  
Sarah White and David Gray  
Scott Henry and Kim Lande  
Scott Wainner  
Sean Nugent  
Shane Chase  
Sharmini Jesuthasan  
Sharon McNair  
Sharon Scheele  
Sharon Worman-Bryne  
Sheila DeMattos  
Sheldon Ramton  
Sherry Haswell  
Sherry Tyler  
Sheryl Coulter  
Sigi Carlton

Sigrid Pate  
Solaine Bardin  
Sophia Charnov  
Sophia Sadlowski  
Sophie Fan  
Srivatsan Thiruvengadam and Annalisa Clink  
Stacy Burgess  
Stacy Sieger  
Stephan Demirjian  
Stephanie Walker  
Stephanie Wilson  
Stephen and Katherine Hon  
Steven Bradshaw  
Steven Minoda  
Subha Vadakkumkooor  
Susan and Duane Lawson  
Susan Daley  
Susan Dunlap  
Susan Kirby Jones  
Susan Marlo  
Susan Perry  
Susan Roden  
Susan Wolf  
Susanne Bayat  
Suzanne Milstein  
Teresa Kraaij  
Tereze Gegaj  
Terri Nissen  
Terry and Peggy Manges  
Terry Frum  
Terry Stillwell  
The Dorothy Jean Risheberger Trust  
Theodore and Barbara Jacobson  
Theodore Butz  
Theresa BaStedo  
Tim Mannschreck  
Tim Ranker  
Timothy and Lydia Vize  
Tom and Ingrid Kelly  
Toni Reyburn  
Tony Chan  
Tonya Wearnar  
Top Notch Pet Furniture  
Tova Benaroch  
Traci Ellis  
Tracy Ross  
Travis McCormick  
US Turf  
Vahn Ketelsen  
Valery Fokin  
Van and Rose Treadway  
Vickie Cady  
Virginia Forrest  
Ward and Sharon Powell  
Warren Takahashi  
Wendy Harp  
Whitney MacDougall  
Wilda Edgmond  
William and Sandra Rosenbaum Charitable Fund  
William Elliott  
William Vandling  
Yulie Willey

# HOW YOU CAN HELP

*There are so many things you can do to help animals and people in need in our community.*

**DONATE TODAY! Contact 858-756-4117 x358, or KristineF@animalcenter.org**

## MEMORIAL GIFTS

We have a beautiful program called "I Remember You" to memorialize pets on-line, by "lighting a candle" and sharing a story and photo. If you have any questions please call the Center, x350 or visit the site to light a candle.  
[old.animalcenter.org/irememberyou/](http://old.animalcenter.org/irememberyou/)

## MONETARY DONATIONS

Helen Woodward Animal Center relies heavily on private donations to fund our programs.

## BECOME A 'PAW PAL'

Monthly donors support our work throughout the year with recurring gifts. Join "Paw Pals" and receive a commemorative pin, exclusive content and advanced invitations to Center events as our thanks to you.

## IN-KIND DONATIONS

To help reduce costs, our programs are always in need of items to support their activities. Visit [animalcenter.org](http://animalcenter.org) for our wish list of specific needs.

## ALTERNATIVE GIFT CARDS

Give the gift that saves lives! A gift to help the animals is a great way to celebrate a birthday, graduation, or the upcoming holidays. We will send a personalized card notifying the recipient of your gift.

## VEHICLE DONATIONS

Take the hassle out of selling your old car, truck, motorcycle, or other vehicle — donate it to Helen Woodward Animal Center! Our simple, hassle-free program will take care of all the paperwork, pick up your vehicle, and send you the documents needed for a tax deduction, while providing valuable funds to help the animals! Call 844-854 PAWS to donate.

## PLANNED GIFTS & PET BEQUESTS

Including Helen Woodward Animal Center in your will or trust will create a lasting legacy to help pets and people in need for years to come. Make provisions to ensure your pets will be cared for in the event of your passing.  
**Contact Renee Resko: 858-756-4117 x347 or email [ReneeR@animalcenter.org](mailto:ReneeR@animalcenter.org)**

## SPECIAL EVENTS

The Center holds a variety of exciting fundraising events throughout the year from our Surf Dog Surf-A-Thon to our Fling Gala.  
**Visit [animalcenter.org](http://animalcenter.org) for more information.**

## CORPORATE AND BUSINESS PARTNERSHIPS

Get your company involved to raise funds for the animals by sponsoring an event, running your own fundraiser, or participating in our HOPE Telethon.  
**Contact Barry Siegel: 858-756-4117 x312 or email [BarryS@animalcenter.org](mailto:BarryS@animalcenter.org)**

## VOLUNTEER

Our work depends entirely on the support of our dedicated volunteers. Many opportunities are available for youth, adults, and groups in our various programs and events.  
**Contact Megan McCarty: 858-756-4117 x305, email [MeganM@animalcenter.org](mailto:MeganM@animalcenter.org) or sign up at [animalcenter.org](http://animalcenter.org)**



## DON AND JEAN ROTH

Helen Woodward Animal Center was recently honored by an extremely generous gift from the estate of Don and Jean Roth. We had the honor of meeting with Don when he made a recent visit to the Center. He was a true animal lover and kindred spirit and we were so sorry to hear of his passing. We learned from their son, Mike, that Don and Jean met when she was secretary to the President of Rohr Industries and he was an aeronautical engineer. Jean was a groomer who showed dogs prior to her work at Rohr and Don was a lifelong dog lover. During their 35 year marriage they rescued multiple dogs through Helen Woodward Animal Center. Fortunately, they were able to retire early and travel extensively. They are survived by their sons, Kent and Mike, who still live in San Diego and continue their passion for dogs.



## Bequests

We hope you will consider an estate gift today to celebrate your love of animals in perpetuity or ask about our pet bequest program to ensure the health and well-being of your forever friend.

**Call Renee Resko at 858-756-4117 x347 for details.**

## PLANNED GIVING

- ☐ I would like to know more about the Center's pet bequest policy.
- ☐ I would like to know more about including the Center in my will.
- ☐ I would like to be invited to an informational bequest luncheon.
- ☐ I have already included the Center in my estate plans.

Name \_\_\_\_\_

Address \_\_\_\_\_

City \_\_\_\_\_ State \_\_\_\_\_ Zip \_\_\_\_\_

Phone \_\_\_\_\_

Email \_\_\_\_\_

*For more information, please detach and return completed form in the provided remit envelope.*





# HELEN WOODWARD ANIMAL CENTER

6461 El Apajo Road • P.O. Box 64 • Rancho Santa Fe, CA 92067  
Phone (858) 756-4117 • Fax (858) 756-1466 • [animalcenter.org](http://animalcenter.org)

CREATING A HUMANE WORLD  
FOR ANIMALS AND PEOPLE

## *event calendar*

### *march*

- 5** Animal Care Camp
- 6** You Can Be a Veterinarian Camp
- 10** Paws & Unwind
- 12** Snake Smart
- 19** Semiannual Therapeutic Riding Tack Sale

### *march 1-31*

Spring Tails

### *march 19*

Spring Tails Family Festival

### *march 25-27*

Orphaned Objects Spring Season Sale

### *march 28 - april 22*

Spring Critter Camp

### *april 22-24*

Orphaned Objects Earth Day Sale

### *may*

- 8** Spring Tails Family Festival
- 11** Paws and Pages
- 14** Animal Care Camp
- 15** You Can Be a Veterinarian Camp

### *june*

- 1-3** The Business of Saving Lives Workshop
- 11** Spring Fling Gala

COWI0322

*shop • donate • volunteer*



*reduce • reuse • recycle*



Benefiting Helen Woodward Animal Center  
**ORPHANED  
objects**  
*designer resale*

*Spring is the perfect time to donate to Orphaned Objects Resale Shop. When you do, you are directly supporting the pets and programs at Helen Woodward Animal Center.*

**Open All Week  
10 am - 5 pm**

[www.OrphanedObjects.org](http://www.OrphanedObjects.org)  
**858-756-4117 x383**

6525 Helen Woodward Way, Suite B  
Rancho Santa Fe, CA 92067  
enter off San Dieguito Rd.  
& follow signs to shop



## ONCE IN A LIFETIME NAMING OPPORTUNITIES

Our new building is open but you can still purchase commemorative plaques and pavers. These opportunities allow you to make a gift in memory of, or in honor of a beloved pet or family member, and give you a chance to leave your legacy.

Visit [animalcenter.org/future](http://animalcenter.org/future) TODAY to customize your gift for our Adoptions building and help us continue to give orphan pets the new facility they deserve!

### Renew or upgrade your GIFT CLUB MEMBERSHIP:

- The Best Friends.....\$150 - \$249
- The Faithful Friends.....\$250 - \$499
- The Loyal Companions.....\$500 - \$999
- The Helen Woodward Society,  
Bronze Circle.....\$1,000 - \$2,499
- The Helen Woodward Society,  
Silver Circle.....\$2,500 - \$4,999
- The Helen Woodward Society,  
Gold Circle.....\$5,000 +

Make a one-time gift club membership donation  
OR divide your gift into 12 monthly payments by  
joining Paw Pals monthly supporters.

If you have any questions, call the Development  
Office at 858-756-4117 x350