



THE COMPANION

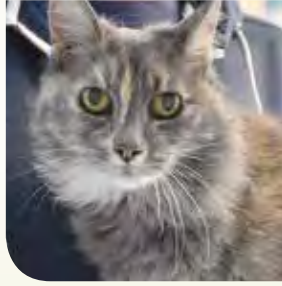
PEOPLE HELPING ANIMALS AND ANIMALS HELPING PEOPLE

*Second Chances
start here ...*

Read Louis' story on page 10

FURIENDS

available for adoption



MAMMA PICKLE

Terrier blend
I am a very energetic dog that loves people but needs guidance. Sometimes I just get too excited! I will do best in a home with older teenagers and a family who has had experience with a smart dog like me!

PECAN

Domestic Short Hair blend
Are you my new family? I want to go home and be with your family so I have new people to play with! I love balls and toys and want to play with you! Please take me home.

NEFERTITI

Domestic Long Hair blend
I absolutely love attention and love being petted. I really want to find a cat-experienced owner who will give me all the love and attention I could ever want. I look forward to meeting you!

CHRISTIAN

Catahoula Leopard Dog - Terrier blend
I am an energetic dog who is looking to find my forever family! I would love to find an adult-only home with active family members who will give me guidance and teach me how to be the best dog I can be.

To see more adoptables, visit animalcenter.org

CREATING A HUMANE WORLD FOR ANIMALS AND PEOPLE

Helen Woodward Animal Center is a unique, private, non-profit organization dedicated to saving the lives of animals and enriching the lives of people. For more than 45 years, our no-kill Center has provided humane care and adoption for orphan animals, as well as animal-centered educational and therapeutic programs for people. The Center is a dynamic, evolving institution that is an agent of change for the animal welfare world. Not only are we operating innovative and beneficial programs for animals and people, but we are teaching others around the world how to successfully market and promote their programs and stop the senseless death of thousands of animals. 🐾

Don't miss a single issue...

Every issue of Helen Woodward Animal Center's *The Companion* newsletter is filled with stories about the relationship between humans and the animals that we love. Four times each year *The Companion* keeps you informed about how you are helping us fulfill our mission of "people helping animals and animals helping people."



SURRENDERED PETS will receive a complete veterinary examination for good health and temperament. A documented history is required for all owner-relinquished animals. Dogs under our care are exercised regularly and cats enjoy comfortable playrooms. Experienced staff screen potential adopters to help clarify needs and ensure a lifelong match. Once an adoption is complete, our staff is available for any assistance to make the transition a success.

Staff

Editor
Renée Resko

Writers
Anne Edwards, Fernanda Lopez and Renée Resko

Art Direction & Layout
Amy Huzil

Board of Directors

Bryce W. Rhodes, Chairman
Steven A. Anderson, Esq.
Michael M. Arms
Charles L. Bieler
Chris Breining
Joe Camp
Daniel Taner Halicioglu
Mark Harris
James Hooker
Diane Keaton
Michael McKinnon
Toni W. Nickell
Katie Shull
Arlo G. Sorensen
David Vigil
Andy Wasa

President / CEO
Michael M. Arms

V.P. of Operations / CFO
Rita Truderung

V.P. of Development
Renée Resko

V.P. of Finance
Renee Simmons

Departments

Accounting
April Betz, Controllor
Michael Seiler, Purchasing/Receiving Manager

Adoptions
Hella Tyler, Adoption Services Director
Dora Dahlke, Adoption Services Manager
LaBeth Thompson, Inventory Manager
Morgan Hamm, Client Services & Foster Assistant Manager
Tracy Woodworth, Animal Care - Assistant Manager
Dr. Ralph Tran - Veterinarian
Angelica Otero, Animal Health Manager

Club Pet
Mary Marlow, Manager
Leah Gearhart, Assistant Manager

Communications
Jessica Gercke, Director
Fernanda Lopez, Manager

Companion Animal Hospital
Dr. Patricia Carter, Chief of Staff
Chelsea Camacho, Hospital Manager

Development
Anne Edwards, Director of Philanthropic Operations
Christine Blosser, Special Events Manager
Amy Huzil, Creative Services Manager
Phoebe Luff, Special Events Manager
Marilyn Martinez, Sponsorship Assistant Manager

Education
Haylee Blake, Manager
Savannah Goehring, Assistant Manager - Animal Care Services

Equine and Outreach Services
Christen Hanley, Director

Human Resources
Wendy Papera, Director

Maintenance
Vahn Ketelsen, Manager
Richard Howard, Assistant Manager

Operations
Jennifer Shorey, Director
Nicole Massara, Director of Special Projects

Orphaned Objects Resale Shop
Mike Salas, Manager

Pet Encounter Therapy
Robin Cohen, Manager

Social Media & Technology
Jackie Kelleher, Manager

Systems Programming
Lon Jones, Manager

Therapeutic Riding
Courtney Mellor, Manager

Volunteers
Megan McCarty, Manager of Volunteer and Retail Services

The Companion is published four times a year by Helen Woodward Animal Center, P.O. Box 64, 6461 El Apajo Road, Rancho Santa Fe, CA 92067, a nonprofit, charitable organization. Circulation: approximately 8,500.

This material may be reproduced with written permission from Helen Woodward Animal Center ©2021. For information, call (858) 756-4117 or visit our website at animalcenter.org.



We can't do it without you.

Dear Friends of the Animals,

I can hardly believe that we are well into 2021. Ever since COVID hit it seems that life has been a bit of a blur, however here at Helen Woodward Animal Center we are proud to say we actually **saved an unbelievable 3,709 animals in 2020** even with all the challenges and restrictions facing our staff including appointment-only adoptions. We have helped more shelters in desperate need around the country and come to the aid of more animals at risk of euthanasia ... because of your support.

Each of the programs here at the Center have persevered through a very tough year and reinvented themselves in amazing ways. Pet Encounter Therapy has brought the unconditional love of animals to those in need through Critter Drive-ins, window visits, Zoom calls and pen pal letters. Education has had children on campus in smaller groups with masks and social distancing and has created a whole library of educational videos for those at home who are unable to join us in person. Therapeutic Riding has brought back almost half of their riders with all the safety protocols in place to keep the riders healthy — physically and mentally. Our hospitals have never been busier and we have not missed a day of providing top quality veterinary care for our community. AniMeals has grown to over 900 clients throughout San Diego that need the support provided by our pet food delivery to ensure that they can keep their best friend. Whether a lonely, isolated senior or a disabled veteran, the love of a pet has never been more important. **We even expanded AniMeals Relief to meet the needs of those impacted by COVID and have partnered with Feeding San Diego to provide human food to over 18,000 family members and pet food to over 4,500 pet owners.** This extraordinary partnership is a true silver lining to this difficult time.

All of the good work being done here at Helen Woodward Animal Center is only possible because of friends like you. I know your hearts soar as dogs like Louis and Prince Charming overcome challenges to live their best life in their forever home and cats like Roo and Houdini receive the life-saving medical care they need to go on to the love-filled life they deserve.

Thank you for your unwavering support during a tough year for all of us. We couldn't do it without you.

For a more humane world,

Michael M. Arms

President and CEO

HOME 4 THE HOLIDAYS® FINDS HOMES FOR 1.2 MILLION ORPHAN PETS DESPITE PANDEMIC



The campaign kicked off in October with a large Blue Buffalo pet food distribution to Southern California and New York rescues and shelters.

Since 1999, 18.6 million orphan pets have found their forever homes through the three-month-long adoption drive. Started by Center President & CEO Mike Arms, Blue Buffalo Home 4 The Holidays aims to encourage holiday pet seekers to adopt their next pet rather than turn to pet stores or backyard breeders.

In 2020, the campaign found homes for more than 1.2 million orphan pets through more than 4,200 participating organizations. The number was an impressive feat amid COVID-19 regulations that shut down some shelters and placed added challenges to adoption processes in order to maintain safety measures.

For the third year, \$25,000 was awarded as part of the Home 4 The Holidays Rescue Center Contest sponsored by Midwest Vet Supply, Merck, KVP, Churu, and Dechra. The grant money goes to the rescue group or shelter who best successfully and creatively promoted adoptions during the holidays.

This year's contest winner was Greene County Animal Control. The Ohio shelter got creative in their approach to promote adoptions by partnering with local businesses to sponsor pet fees, posting on social media letters to Santa from adoptable pets written by local Girl Scouts and creating a virtual meet-and-greet studio to showcase orphan pets during COVID-19 shutdowns and to continue promoting pets on local TV stations. In a promotion that was very fitting for 2020, the shelter even advertised a free roll of toilet paper with every adoption. These efforts resulted in 98 successful pet adoptions during the contest period.

Two more rescue organizations were awarded \$2,000 each for their efforts to promote orphan pets during the holidays.

The Home 4 The Holidays campaign also got people talking on social media with the #IChoseToRescue Contest. Participants shared why they chose to rescue and the impact their pet has had on their life. Three touching pets' rescue stories were selected as winners, with each pet getting a one-year supply of Blue Buffalo pet food and \$1,000 to award to the rescue organization from where the pet was adopted.

Despite the many challenges rescue organizations and shelters faced amid the ongoing pandemic, Home 4 The Holidays helped an astounding number of beautiful pets in need find forever families.



SPREADING HOLIDAY CHEER TO THOSE MOST IN NEED

In a year marked with uncertainty, mass job loss and crisis, Helen Woodward Animal Center remained committed to the pets and people most in need. A top priority as 2020 wound down was ensuring the holidays were still a time of joy and togetherness for families facing hardship.

Just two days before Christmas, the Center's new AniMeals Relief program welcomed more than 80 families to a festive and unique holiday celebration on wheels complete with Santa, animal encounters, food for people and pets and special gifts for kids.

In 2020, AniMeals, which provides food to the pets of homebound seniors, military veterans and San Diegans experiencing homelessness, and the program's COVID-19 expansion dubbed AniMeals Relief, served more than 817,000 meals to pets in need.

Since March, staff working the Center's AniMeals Relief program, had been hearing the stories of families affected by job loss due to the COVID-19 pandemic.

It became clear, that amid the financial

crisis, Christmas gifts and celebrations for the children of these families would likely be scarce or even non-existent.

"We were seeing first-hand how much need there was and still is among our community members," explained Sarah Jilka, AniMeals Program Supervisor. "We've gotten to know the wonderful families who have received support from AniMeals Relief and they deserved a holiday season filled with joy during these tough times."

THE CENTER EXTENDS A SPECIAL THANK YOU TO BLUE BUFFALO, FEEDING SAN DIEGO, TARGET, KAHOOT, DR. VERA HEIDOLPH AND EVENT GUESTS AMAZON'S "THE PACK" CONTESTANTS AND LOCAL SURF DOG DUO KENTUCKY AND DERBY FOR MAKING THIS HOLIDAY CELEBRATION POSSIBLE.

With Center staff and volunteers playing the role of Santa's elves, the drive-through event kicked-off Wednesday, Dec. 23 with dozens of cars lined up to receive special holiday foods from Feeding San Diego, two weeks supply of pet food, treats and fun pet goodies from Blue Buffalo!

Some of the brightest moments were seen as children poked their heads out of car windows for meet-and-greets with the Center's education

animal ambassadors and therapy animals adorned in festive holiday garb. Alpacas Kronk and Kuzco, Bella the mini-horse, Therapeutic Riding horses Desi, Dante and Jack and numerous volunteer therapy dogs helped to put a smile on many young faces.

The holiday drive-through celebration culminated with a special visit to the North Pole where laughter and excitement was plentiful as families made a final stop to meet Santa. All 150 children in households served

by AniMeals Relief received holiday gifts ranging from Target gift cards to dolls, playsets and action figures.

"It was heartbreaking to know that some of these children might not have received any gifts under the tree this year," explained President and CEO Mike Arms. "I feel good knowing that thanks to our partners, donors and our team, we were able to make the holiday brighter for these families who have unfortunately struggled to stay afloat under these circumstances." 🐾



YOU'LL HOP FOR JOY THIS SPRING!

Happiness will bloom at either of our Humane Education's spring programs. Whether it's day camp for kids on spring break or some seasonal adventures for the whole family, fun awaits!

During spring break, kids can come to Spring Critter Camp to safely socialize and spend quality time with amazing animals. Each day is full of animal encounters plus themed activities, crafts and games. Extended care, lunch options, discounts and scholarships are available for camp.

Spring Tails lets your family safely explore nature together and discover how animals of all kinds use the season to grow their families. You'll get to meet several critters with hands-on encounters that are sure to bring a smile and leave a lasting memory. Celebrate the season by getting creative with a matching craft, and prepare for a fantastic family activity!

Visit animalcenter.org/education for full details and online registration for both programs.

Questions? Call us at (858) 756-4117 x318 or e-mail education@animalcenter.org.

SPRING Critter CAMP
Hands-On Humane Education

March 29 - April 2
April 5 - 9
April 12 - 16

Preschool - 6th grade
Daily sign ups available!

Spring Tails
MARCH - MAY
By appointment or on select event days between 9am - 3pm

AT HELEN WOODWARD ANIMAL CENTER

Fun for the whole family!



My Sister's Attic employees, Luz, Sam and Cee Cee load up donated clothing for Helen Woodward Animal Center.



my sister's attic
luxury home consignment



my sister's closet
fashion consignment



well suited
men's consignment

"From the first month in 1991 when my sisters and I started My Sister's Closet, we donated our unsold inventory to the thrift stores of local animal shelters. Since then we have given millions of dollars in product and cash to help save the lives of those who can't speak for themselves.

We are proud to add Helen Woodward Animal Center to our list of beneficiaries for donations. We literally give a truckload of thrift items every week to Orphaned Objects!

From everyone at My Sister's Closet, we thank our customers for their donations and hope to do even more in 2021 to help the four-legged animals we so dearly love."

Come visit us at either of our San Diego locations

Costa Verde Center
8610 Genesee Ave,
San Diego, CA 92122
Hours: 9-6pm
Ph: (858) 455-0045

Encinitas Marketplace
133 N El Camino Real,
Encinitas, CA 92024
Hours: 9-6pm
Ph: (760) 230-1250

JOIN US FOR A CELEBRATION...
HELEN WOODWARD ANIMAL CENTER
PROUDLY BRINGS YOU OUR
33RD ANNUAL SPRING FLING GALA

imaginarium

ILLUMINATING A MORE HUMANE FUTURE
THE ONLY LIMIT IS YOUR IMAGINATION
SATURDAY, JUNE 19, 2021

VISIT ANIMALCENTER.ORG FOR EVENT UPDATES AND MORE INFORMATION

33rd annual
HELEN WOODWARD
ANIMAL CENTER'S
SPRING
FLING
Gala

SAVE THE DATE

NEED A GAME PLAN FOR MOVING?



Call me for a FREE Market & Staging Evaluation!

I give **honest advice** on what your needs are for selling, relocating or buyer consultations. I welcome the opportunity to speak with you!

Portia ... There is no substitute.
36 years of giving my clients personal care.




PORTIA METRAS
Realtor®
C.760.644.6492
Portia@RE4You.com
www.PortiasHomes.com
CalRE# 00870635



COLDWELL BANKER REALTY

Not intended as a solicitation if your property is already listed by another broker. Affiliated real estate agents are independent contractor sales associates, not employees. ©2020 Coldwell Banker. All Rights Reserved. Coldwell Banker and the Coldwell Banker logos are trademarks of Coldwell Banker Real Estate LLC. The Coldwell Banker® System is comprised of company owned offices which are owned by a subsidiary of Realty Brokerage Group LLC and franchised offices which are independently owned and operated. The Coldwell Banker System fully supports the principles of the Fair Housing Act and the Equal Opportunity Act.



Laugh, cry, and fall in love with the four-legged stars of these vignettes from a veterinarian in her quest to save all animals

“This is a MUST read for all of us who have been blessed with a cold nose that keeps our hearts warmed.”

—Susan B. Krebsbach, DVM

Available now on Amazon.com in Kindle and paperback formats

LIZZY'S LOVING TRIBUTE

HELEN WOODWARD THERAPEUTIC RIDING CLIENT REMEMBERS HER DAD BY PAYING IT FORWARD...

In late 2020, Helen Woodward Animal Center's Therapeutic Riding program was recognized for its role in helping a young rider grieve the loss of her father.



Therapeutic Riding student Elizabeth "Lizzy" Simas has had a life filled with medical trials.

Diagnosed at 3 years old with Legg Calve Perthes Disease — a childhood hip disorder in which a disruption of blood flow to the femur causes the bone to die and stop growing — Lizzy underwent multiple surgical procedures. Shortly after, she was diagnosed with a seizure disorder which, along with a childhood stroke, led to speech delays, short term memory loss, motor planning difficulties and developmental delays.

Despite her extensive medical history, Lizzy is a young woman full of life. When Lizzy turned 20, her parents sought out the Center's Therapeutic Riding Program to not only assist with her unique challenges but to also give her a sport to fuel her passion.

The Center's Therapeutic Riding program provides children and adults with physical and cognitive challenges the opportunity to interact with specially trained horses year-round in weekly lessons to enhance physical, cognitive, social-emotional and motor skills.

Lizzy was a perfect candidate for the program and an ace student, even qualifying to compete in the United Professional Horseman's Association (UPHA) National Championships, where she was named the top 5th rider in the nation and awarded a program scholarship.

Throughout it all, Lizzy's loving parents were integral parts of her development and cheerleaders through each of her achievements. For this reason, the sudden heart attack of her beloved father, Ronald Simas in May of last year was particularly devastating. Although first responders from San Diego Fire Station 36 arrived on the scene only minutes later, all efforts to resuscitate him failed.

Lizzy and her family decided to pay his love forward. In October 2020, on Lizzy's 24th birthday, Lizzy requested donations be made to Helen Woodward Animal Center's Therapeutic Riding Program in her father's name in lieu of gifts.

"Due to COVID-19, the Therapeutic Riding Program had shut down for a short time," explained Teri Simas, Lizzy's mother. "They found a way to open back up almost immediately to begin Lizzy's grief counseling through Therapeutic Riding. Lizzy is able to work through her grief through her dogs and through her horses."

In late November, Lizzy and the Simas family presented a generous check to the Center's Therapeutic Riding Program and to San Diego first responders who came to her father's aid. They expressed their immense gratitude saying the Center has been instrumental in helping Lizzy cope during their time of grief.

"Lizzy has such a big heart and incredible spirit," Therapeutic Riding Program Manager, Courtney Mellor said. "When her father passed away, my heart broke for her. But her decision on how she was going to cope with it, by giving back, was incredibly touching and so perfectly in keeping with the way she handles every hardship she's met." 🐾

CRITTER PEN PALS HELP DELIVER JOY TO SENIORS IN NEED

Helen Woodward Animal Center's Pet Encounter Therapy (PET) program is making sure seniors in assisted living and those in skilled nursing facilities are receiving deliveries of joy amid the ongoing pandemic.

For nearly a year now, the doors at such places have been closed to visitors as part of COVID-19 safety protocols, giving way to devastating loneliness among residents.

But since August, deliveries of hand-made cards and letters filled with love and laughs are spreading smiles among residents. Since the Pen Pal Project's launch, more than 1,000 correspondences have been delivered to four different facilities uniting cuddly critters with seniors in need of company.

For more than 35 years, Helen Woodward Animal Center's PET program has utilized the incredible benefits of therapy animals to provide comfort, love and laughter to children in hospitals and foster care, seniors in assisted living and skilled nursing facilities and others in need.

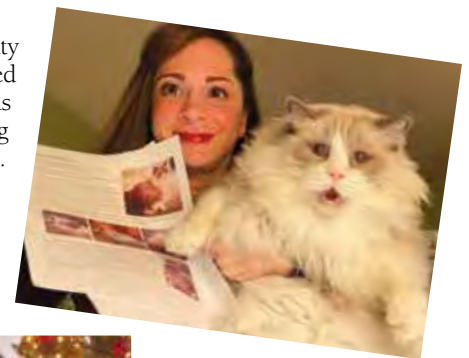
In March, when the COVID-19 restrictions blocked in-person visits to these organizations, the program's therapeutic animal visits continued virtually over Zoom, from behind large residence hall windows, and even through car windows, but PET Manager Robin Cohen knew the program could go even further.

She invited all Helen Woodward Animal Center employees and PET volunteers with pets to take part in the new Pen Pals program. Seniors were asked which types of animals they would be interested in hearing from, along with questions about their own interests and hobbies. Cohen then matched a senior with a staff or volunteer pet and asked its owner to "help their pet" write personalized notes for their special senior. The project was an enormous hit.

"There is absolutely nothing like the love of an animal," Cohen explained. "As pet owners we see the openness they exhibit in making new friends and the thrill our pets experience in the smallest things. This energy immediately came out in the letters the pet-owners were helping their pets write and the seniors received the benefit of these happy, loving notes filled with pictures of the pets. The feedback was so incredible."

Over the holidays, Pen Pal letters turned into festive holiday cards with each senior receiving a bundle of 10 beautiful cards from a variety of adorable critters.

Emails from residence activity directors have included messages such as; "this program is such a blessing and joy for our residents. They get so much happiness from seeing pictures of adorable furry ones and receiving such wonderful, personalized letters."



"They smile for days. The attention and care your staff and volunteers put in is so appreciated. They create miracles over here!" 🐾



BANDIT STEALS THE SPOTLIGHT ON WORLD'S CUTEST SPORTING EVENT

For the past 2 years, Helen Woodward Animal Center has been honored to cheer on one of its own. This year, a specially selected Center orphan pup high-tailed it onto the field in Animal Planet's beloved PUPPY BOWL.

Although COVID restrictions limited this year's players to east coast shelter participants, another Helen Woodward Animal Center puppy comPETitor got her chance to shine during the big game.

For the last 17 years, Animal Planet has televised PUPPY BOWL – the world's cutest sporting event. On football's biggest day, two teams of the fluffiest and cuddliest line barkers and wide retrievers take to

the gridiron for a playful game of terrier touchdown, puppy penalties and furry fumbles.

Helen Woodward Animal Center first became a part of the world's cuddliest game in 2019 when a tiny Center orphan terrier made the trip to the east coast to compete. Her hilarious bounce drew the attention of the RUFFeree and, in turn, stole some serious screen-time during the game. In 2020, another Center cutie, a miniature chocolate poodle-blend, showed so much spunk he became a featured player and a finalist for that year's MVP (Most Valuable Puppy).

This year, a new "Adoptable Pup" feature,

interspersed throughout the game, highlighted available orphan pups and their stories. Helen Woodward Animal Center was delighted to introduce the world to an adorable, 3-month-old, cattle dog-blend named Bandit — a name appropriate for her stunning eye mask.

The Center's 2019 player, Poppy, was also featured, in a "Where Are They Now" segment, giving viewers a glimpse at her happy life with her forever family and the unconditional love she provides to hospitals, nursing homes, and other special needs facilities during her weekly pet therapy visits. 🐾

2021 CALENDAR WINNERS



Meet Sweet Pea, Elvis, Howie and Duke, Helen Woodward Animal Center's 2021 Superhero Sidekick Calendar Contest winners. These four superheroes' life mission has been to protect and love their mom, Karen, who says "they truly keep me smiling and will stop at nothing to be next to me." Elvis, the smallest even chases the others away in order to be the only one giving kisses and getting pets. When the group is not vying for their mom's attention, they enjoy strolls to the park, getting their teeth brushed and snacking on their favorite treats: sliced zucchinis. Each hero likes to end the day with a bath before retiring to bed, where they all sleep cuddled up next to their mom, the one who makes their life worthwhile.

Our 2021 Calendar Contest was a huge success raising almost \$16,000 for the Center. Keep on the lookout for our 2022 Calendar Contest Fundraiser, which will be starting this summer!

**Love them like family
Feed them like family.®**

BlueBuffalo.com

BLUE
Superior Nutrition
Ultimate Protection

Life Protection Formula with LifeSource Flex
ADULT

Indoor Health with LifeSource Flex
ADULT

Bits

Naturally Fresh™
WALNUT SHELL CAT LITTER

- ✓ ALL NATURAL
- ✓ BIODEGRADABLE
- ✓ LASTS LONGER WITH 3X ABSORPTION than the leading clay litter**

Quick-Clumping
SUPERIOR AMMONIA ODOR CONTROL

NET WT 14 LBS (6.35 kg)

THE NATURAL LITTER FOR THEIR NATURAL INSTINCTS

Made from all-natural walnut shells, Naturally Fresh is an eco-friendly, biodegradable litter that's good for your cat and the planet. It has the organic ability to neutralize odors better than clay, pine, corn, and wheat, while remaining free of perfumes, toxins, and silica dust.

ALL-NATURAL. BIODEGRADABLE. CERTIFIED SUSTAINABLE.

NATURALLYFRESHLITTER.COM

Second Chances Start Here



A NEGLECTED DOG GETS HIS SECOND CHANCE AT HELEN WOODWARD ANIMAL CENTER AND TOUCHES HEARTS ALL OVER THE WORLD.



BLIND AND BROKEN

Every month, hundreds of orphan dogs, cats, puppies and kittens make their way to Helen Woodward Animal Center via van transports. All are in search of second chances coming from areas where the opportunity of finding a forever home is bleak and the resources for their care are scarce.

All orphan pets touch the hearts of staff and volunteers, but recently the story of one orphan, a heartbroken 3-year-old Labrador Shepherd blend, made a lasting impact on hearts near and far.

Arriving in a transport from Calexico, California, Louis, a gentle canine was dealing with more than relocation jitters. In a case unlike any other seen at Helen Woodward Animal Center, Louis had lost both eyes,

due to a severe eye infection left untreated by his former owners. The loss of sight and a lingering leg injury subsequently resulted in Louis' owners relinquishing him to the pound when discovering the challenges of living with a blind pet.

Louis arrived extremely shy, trying to learn how to live life in the dark. But his incredibly loving personality quickly peeked through. It was obvious he was comforted by the presence of another person or animal.

Louis received a full medical exam and was placed into the loving home of a Center foster volunteer who began helping Louis transition to his new life without sight.

Louis' story is devastating but one not unfamiliar in the world of animal rescue.

"It is incredibly important that people who consider getting a pet know the obligations they take on with these animals," Helen Woodward Animal Center Adoptions Director Hella Tyler said. "It's just devastating to see an animal treated the way Louis was treated."

After getting some time to settle in, the Center's Adoptions department began the search for an adoptive family as special as Louis. To accommodate Louis' lack of sight,

they sought an adopter with a one-story house who preferably worked from home. Mostly, it was important that his adopter be prepared to provide patience and special care as Louis figured out his way around a new environment.

"Louis is extraordinary," Tyler explained. "He really suffered at the hands of his former owners but he showed no malice toward humankind. He deserved the best family."

Little did the Center know, a call-out for this perfect adopter, would result in an incredible worldwide response.





LOUIS' STORY REACHES THE MASSES

If there is a light at the end of Louis' dark tunnel, it was the overwhelming love that poured into Helen Woodward Animal Center following the sharing of Louis' story. It went viral, hitting PeoplePets.com, Yahoo News, HLN, The Daily Mail and hundreds of other publications and media outlets. Loads of emails, phone calls, donations and applications flooded the Center. Desperate to help, donations topped \$30,000 in a matter of days to support Louis and pets like him.

The Los Angeles Chargers reached out, requesting to share Louis' story and bring him more attention. Offers to sponsor his adoption, his food, muffin halos/bumper-collars/sonar-collars, to pay for his medical care and more, came in from across the country.

Social media shares and emails filled with loving messages arrived from people in states as far as Tennessee, Pennsylvania, Indiana, Washington D.C., New York, Texas, Montana, Kentucky, Nevada, Arizona, Georgia, Florida and North Carolina and from countries as far away as Spain, Panama, The Netherlands, Chile and Canada.

Staff received more than 160 inquiries to adopt Louis from 32 different states including Hawaii and Alaska and even from Canada and Mexico.

Ultimately, however, Helen Woodward Animal Center sought a local adopter to reduce the stress of Louis' transition into his new home and so that the Center could provide his new family in-home training from Rob Kutty of San Diego Pet Training.

This was important in order to provide the new family techniques on how to care for a special needs dog.

Upon the review of a slew of adoptions applications, a heartfelt letter stood out among the rest.



A NEW LIFE BEGINS

16-year-old Jordan Walker described the immense devotion her family has for their rescue pets (a bulldog named Dragon and bunny named Honey) in a letter accompanying their adoption application for Louis.

"Our pets are so loved and spoiled," Jordan wrote. "We just know that Louis is going to be the perfect addition to our pack."

The Walkers were a family seemingly gifted by fate to sweet Louis. Steve Walker is a Marine veteran who began to lose his sight at the age of 18 due to a rare eye disease called Retinitis Pigmentosa. Despite his loss of sight, Steve has gone on to compete in marathons, triathlons, and even the IRONMAN World Championships in Kona, Hawaii.

The Walker's home is outfitted to accommodate Steve's visual impairment, with pocket doors instead of swinging doors, a one-story layout and other special features.

In their adoption application, the family included videos of the house's special accommodations to show how tailor-made the layout is for Louis.

On January 15, Louis proudly and eagerly walked out of the Center's adoption building to a special adoption ceremony where he

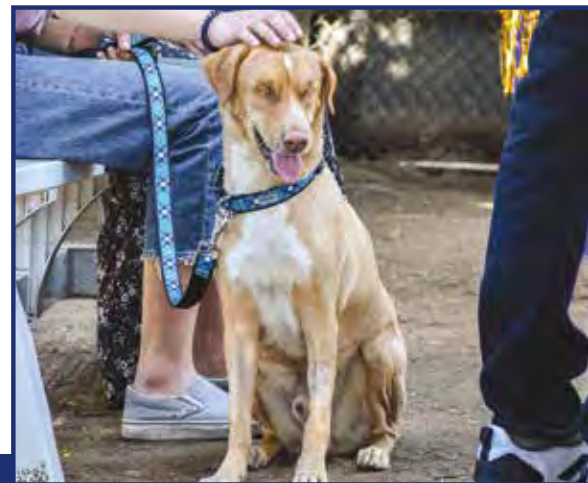
joined his forever family, the Walkers. Joyful Center staff, Louis' foster family and news cameras looked on.

The Walker family was presented with an array of celebratory gifts including a covered adoption fee paid for by a Chicago woman named Babette Henderson; an anonymous donor provided one year of veterinary services and 10 sessions of training services from San Diego Pet Training. Louis' gifts also included a \$500 Petco Gift Card and a Subaru Loves Pets Adoption Kit from Frank Subaru: an original artwork print of Louis created by an Instagram Louis-fan named Erika Ho; two bags of Blue Buffalo Pet Food; and a card signed by the entire staff who worked with the sweet pup at Helen Woodward Animal Center.

With a new name, Murphy is adjusting to his new life. The Walkers say he has made a great friend in Dragon, their Bulldog and they love barking at passersby together. His favorite activities include going outside and cuddling on his new bed.

In the coming weeks, he will begin exploring the beaches, water and sand of his new Southern California forever home.

Murphy is a symbol for the many mistreated pets who find themselves relinquished to shelters and county facilities across the globe but also a symbol of the incredible resilience of orphan pets. He proves that the opportunity for second chances and the combined efforts of many to support rescue animals can lead to amazing happy endings. 🐾



Orphan pets Like Louis come through our doors at the Center regularly. With care and love from our team and our fosters, and with generous gifts from people like you, we can continue to give second chances to every orphan pet in need.

JOIN OUR MISSION AND SUPPORT MORE PETS LIKE LOUIS. [GIVE ONLINE AT ANIMALCENTER.ORG/LOUIS.](https://www.animalcenter.org/loUIS)



HELEN WOODWARD ANIMAL CENTER'S COMPANION ANIMAL HOSPITAL DR. ANGELA GAETO ADDRESSES CANINE AND FELINE DENTAL HEALTH

WHY ARE VETERINARY DENTAL CLEANINGS IMPORTANT?

A veterinary dental cleaning is provided to pets to maintain good oral hygiene and involves general anesthesia. This is often an owner's number one concern. The level of anesthetic risk that pertains to your pet should be considered and discussed with your veterinarian. The vast majority of pets would not be cooperative for examination of each tooth from all angles, examination of the gum tissue and evaluation of tooth stability without being under general anesthesia. Pets also need all surfaces of the tooth cleaned, including underneath the gum line. A dental cleaning includes polishing after removal of the plaque and tartar build up, which is also why anesthesia is necessary.

Avoiding dental cleaning can lead to serious medical problems such as abscessed teeth, severe bone loss in the jaw and systemic bacterial infections.

WHAT CAN I DO FOR MY PET'S DENTAL HEALTH AT HOME?

There are many options for owners for at-home dental care and also many different tools. At-home dental care can range from feeding dental health food and treats, to brushing your pet's teeth. The more cleaning and prevention of plaque and tartar build up that's done between professional dental cleanings, the less frequently these cleanings are necessary. Pets that are susceptible to long term dental disease such as small breed dogs or dogs with dentition abnormalities can have dental food for their diet which will decrease the amount of long term plaque and tartar build up. Pets can also have treats that will promote dental health by breaking down tartar. Owners can also brush their pet's teeth at home using pet friendly toothpaste in flavors such as poultry, malt and seafood. Adopting good dental health habits will promote the long-term health of your pet.

It is best to choose products endorsed by the Veterinary Oral Health Council because there is some scientific proof of their efficacy.

Bequests



ARTHUR G. ROSSITER

June 1, 1939 - October 1, 2020

Unfortunately, we did not have the opportunity to get to know Arthur Rossiter but his niece, Debbie Whitman, was kind enough to reach out to us to let us know that we were a significant beneficiary in Arthur's estate. She shared with us some great photos and stories about her uncle and an opportunity to get to know him a bit better. Arthur was the youngest of three children born in the Bronx, N.Y. City. Arthur had a lifelong interest in Egyptology and it was his life's dream to visit Egypt. While there, he visited countless tombs, temples and sights by the Nile near Luxor, bicycling around the Valley of the Kings. Retiring from Burlington Industries, Arthur moved to San Diego around 2006, where he enjoyed Balboa Park, and the swinging bridges near his Hillcrest neighborhood. Arthur had many friends. He loved to travel, and loved serving visitors his lemon chicken or delicious curry recipes. He was a frequent volunteer in support of his community. Arthur is featured here with one of his beloved dogs.

MARIA V. RUSSO

Unfortunately, we did not have the opportunity to get to know Maria Russo but her friend, Mirta Valdes, was kind enough to reach out to us to let us know that we were a significant beneficiary in Maria's estate. Maria Russo came from Italy in 1952, at the age of 15 years old. She was and will forever be an animal lover. She would worry about stray animals and would feed them all the time. She made it known that she planned on taking care of many more animals upon her passing.



MELANIE FURTADO

Melanie was a kind hearted woman. She respected and adored all kinds of life, especially dogs and cats. It didn't matter if it was an insect, rodent, reptile or a simple worm; she took great pleasure to ensure they weren't in harm's way. She will always be remembered and loved by all who knew her. Bruce Furtado is honoring his wife, Melanie, with a naming opportunity in the new Humane Education Village at Helen Woodward Animal Center.



We hope you will consider an estate gift today to celebrate your love of animals in perpetuity or ask about our pet bequest program to ensure the health and well-being of your forever friend.

Call Renee Resko at 858-756-4117 x347 for details.



Communications Director Jessica Gerke and Communications Manager, Fernanda Lopez on assignment.

WHERE are they now?



Thank you

TO THE WONDERFUL MEDIA OUTLETS WHO SUPPORTED OUR WORK IN 2020!

TELEVISION:

FOX 5 NEWS TEAM:

Raoul Martinez
Aida Soria
Shally Zomorodi

**KFMB – CBS/CW CHANNEL 8/
CHANNEL 6 NEWS TEAM:**

Barbara Richards
Eric Kahnert
Kerri Lane
Jenny Milkowski
Tiffany Frowiss

**KGTV – ABC CHANNEL 10
NEWS TEAM:**

Megan Perry
Virginia Cha
Jim Patton

**KUSI – CHANNEL 9 NEWS
TEAM:**

Hunter Sowards
Jake Minger
Tommy Seblan
Sandi Lampe
Dave Scott
Elizabeth Alvarez
Pat Gilligan
Ginger Jefferies
Vince Douglas
Mark Mathis
Allie Wagner
Jason Austell
Francella Perez
Kacey McKinnon
Lauren Phinney
Maria Villanueva

RADIO:

MAGIC 92.5:

Jagger and Kristi
Samantha De Jesus
Len Balistreri

**NEWSPAPER/
MAGAZINE/WEB:**

PEOPLE MAGAZINE/PETS:

Kelli Bender
Kate Hogan

**RANCH AND COAST
MAGAZINE:**

Mia Stefanko
Bob Stefanko

SAN DIEGO UNION TRIBUNE:

Diane Bell
Linda Mcintosh

COAST NEWS

DEL MAR TIMES

FAIRBANKS LIVING

MAGAZINE

INSIDE EDITION

LA JOLLA LIGHT

LA JOLLA VILLAGE NEWS

NORTH COUNTY

PUBLISHERS

POMERADO NEWS

RANCH LIVING MAGAZINE

RANCHO SANTA FE REVIEW

SAN DIEGO COMMUNITY

NEWS GROUP

SAN DIEGO FAMILY

SAN DIEGO MAGAZINE

THE PATCH

THE VILLAGE NEWS

Helen Woodward Animal Center honored healthcare heroes fighting the COVID-19 pandemic by naming puppies and kittens after nominated healthcare workers.

Last summer, a nomination came in for a Nurse Hailey that read: “Hailey is my daughter who works as an RN for Scripps Hospital in San Diego. She is a wonderful daughter, sister, military wife, mother, nurse, and yes, a dog lover! She works tirelessly in all her many roles. In recent times, she has been a dedicated health care worker who puts other's needs before her own. Hail, hail, to Nurse Hailey! We love you!”

In honor of Nurse Hailey, a sweet Shepherd blend puppy received her name and was quickly adoption by the Habr family.

Now named Cali, the Habrs recently wrote in saying their new pup is a calm and gentle soul. She is wonderful with children and loves the beach. They said “we hit the jack pot by choosing her. Our family is now complete.”

You can check out more of the Healthcare Hero nominations at animalcenter.org/heroes.



Thank You

TO ALL OF OUR GENEROUS DONORS WHO JOINED OR RENEWED THEIR MEMBERSHIP IN ONE OF OUR GIVING CLUBS, PARTICIPATED IN SPECIAL EVENTS, OR PROVIDED IN-KIND SUPPORT BETWEEN JANUARY 1, 2020 AND DECEMBER 31, 2020.

During this challenging time we are very proud to say the Center has kept its doors open—to be here for the animals and people who need us!

It has been an unprecedented year for Adoptions — we are up over 600 adoptions from last year for a total of 3,709 pets in forever homes in 2020! These are pets who came from shelters that were closed or overcrowded and were desperately seeking a place for cats and dogs that were out of time and options. About 500 foster families have assisted us in our life-saving efforts by taking newborn puppies and kittens, as well as pregnant moms and babies who need a place to stay until they can be spayed or neutered and rehomed. Many shelters have had to close their doors due to COVID-related issues and Helen Woodward Animal Center has become a vital resource for them and so many others who need help placing adoptable pets. There has truly never been a better time to bring home the unconditional love of our animal friends.

Since Home 4 the Holidays® began in 1999, we have helped find homes for over 18

million orphan pets, and since Remember Me Thursday® began we have made over 1 billion impressions on social media worldwide to honor those pets who lost their lives too early.

When COVID hit we also expanded our AniMeals program to include those who have lost their jobs due to the virus and are struggling to be able to purchase pet food for their cats and dogs. This new program, AniMeals Relief, in partnership with Feeding San Diego has been able to provide human food to these families every two weeks. Holiday festivities for the families included individual gifts for each child, a Critter Drive-In experience, as well as a visit from Santa.

We have been able to return to Therapeutic Riding at 25% capacity and will continue to expand the rider groups wherever possible. We also continue to offer our Humane Education camps and school programs for children who need a safe, fun outlet during these isolating times. We have even been offering support for children attending “virtual” school and in need of tutoring and guidance during their school day while parents are working.

The Pet Encounter Therapy program has gotten incredibly creative with a pen pal program (over 600 holiday cards were sent to seniors “penned” by our staff animals!), critter drive-ins at the Center and Zoom calls with our therapy animals to clients around the country.

Beyond all of this programming for the community, Helen Woodward Animal Center is committed to sharing what we do with organizations around the country and the globe. This past year our team was sidelined from our usual travel due to COVID but we look forward to getting back out there as soon as we are allowed to do so safely. We continue to be committed to providing two 3-day workshops at the Center annually, as well. In 2020 we offered a virtual workshop to groups around the world to share our best practices on everything from fund raising to PR when they needed it most.

Thank you for all you did to support our efforts to change the lives of pets and people in 2020. We look forward to a phenomenal year ahead! 🐾

HELEN WOODWARD ANIMAL CENTER 2020 DONORS

This list represents individuals and organizations who gave a total of \$150 or more between January 1, 2020 and December 31, 2020.

BEQUEST GIFTS

We are grateful to the individuals below who chose to leave a legacy of caring by including the Center in their estate plans. These gifts will help ensure the long-term stability of our programs so pets and people in need will continue to receive the help they need for many years ahead.

- The Amptman Trust
- Abbie J. Anderson Trust
- Shari Balderston Administrative Trust
- Adele G. Borut Family Revocable Trust
- Laura Burdge Trust
- Mary Helen Coriden Trust
- Rena J. Edgerton Trust
- Fowler Revocable Living Trust
- Gomez Family Trust
- Beverly Kirby/ Richard Kirby Revocable Trust

- James Kuden Family Trust
- William Edward Kuster Trust
- Belina Lee Lazzar Trust
- John Edward Martin Trust
- The Angela M'liss McGill Trust
- Richard and Elva Mico Irrevocable Trust
- Michael P. Mitchell Living Trust
- O'Brien Family Trust
- Kathleen C. Pickett Revocable Trust
- Eleanor S. Rogers Trust
- Arthur Rossiter Estate
- Maria V. Russo Trust
- Stanley Ira Santo Trust
- Thelma Sue Tinsley Trust
- The Gillian D Wight Revocable Trust

THE HELEN WOODWARD SOCIETY GOLD CIRCLE \$5,000+
Bradley Adams
Robert Akins
Line Winther Alnes

- Steve and Lisa Altman
- Animals for Armed Forces
- Grace Arnold
- Neil and June Ash
- AT&T
- Maxine Beige
- Beyster Family Foundation Fund IV at the San Diego Foundation
- Linda Blinkenberg
- Blue Buffalo Company, Ltd
- Sharon Bradford
- Linda Brandes
- Clifford and Christine Breining
- Gary Broad Foundation
- Lupe Buhr
- Bycor General Contractors, Inc.
- Jennifer Cieslak
- Cleveland Holdings, LLC
- Jed and Roberta Cohen
- Dana and Kathy Collins
- Confidence Foundation
- Robert Cotton
- Mary Curran
- Carlo and Nadine Daleo
- Julie Dixon
- Eco-Shell Inc.
- EDCO Disposal Corporation
- Earl and V. Feldman
- Darlene Fujimoto

- Donald and Ellen Goodwin
- The Halicioglu Family Foundation
- Hoehn Motors
- James Hooker and Portia Metras
- Humane Associates of Northern San Diego County
- Richard and Janet Hunter
- Brad and Sheila Jacobs
- Rise Johnson
- Patrick and Stephanie Kilkenny
- Katherine Koehler-Grubstein
- Ellen Kohls
- Michael and Ann Kriozere
- Karen Lauder
- Laurel Foundation
- Alex and Elisabeth Lewyt Charitable Trust
- Lucky Duck Foundation
- Steve & Sharron MacDonald Family Foundation
- Kevin and Leann McCarthy
- Wendy McWethy
- Midwest Vet Supply
- Susan and Charlie Muha
- Myers Family Foundation
- The Norbell Foundation
- Nick and Pamela Omidi
- Paulus Family Foundation
- Pedigree Foundation

- Petco Foundation
- Petco
- Tim and Claudia Pontier
- Rancho Santa Fe Foundation
- Bryce and Sue Rhodes
- Brenda & Dave Rickey Foundation
- The R J Family Fund
- Bridget Rose Foundation
- Don Roth
- Kristin and Nick Ruscetta
- San Diego Woman's Club
- Linda C. Scott Fund for Animal Welfare
- Kirk Scrima
- The Selander Foundation
- Maytha Shaffer
- Kenneth, Katherine and Natalie Shull
- Garrett Shumway
- Gwendolyn M. Sontheim and the Aqualia International Foundation LTD
- Arlo Sorenson
- Rose Thiessen
- Vail Memorial Trust
- Valerie Viterbi
- The Alexander and Valerie Viterbi Fund of the Jewish Community Foundation
- Maggie Wong

WWW Foundation
Meiqin Xiao

**THE HELEN
WOODWARD
SOCIETY
SILVER CIRCLE
\$2,500 - \$4,999**

Alexander Family Fund
Lynn Bailey
Marianne Sanders and Judith Bauer
Carol Ann Millard
Jamie Carr
Debbie and Michael Coulter
Lindsey Davidson
Jennifer Davies
Joe and Terri Davis
Jacqueline Dewitte
Susan Dube
Candace Edelmann
Willis Allen Real Estate
First Republic Bank
Ray Fluta
James and Susan Foley
William and Linda Gabriel
Michael Gilbert
Rose and Mike Hawman
Hollywood Beauty Awards
Larson Giving Fund
Dianne and John Efferts
Clay MacLeod and Elizabeth Wohlford-MacLeod
Ruth Meehl
MuttNation Foundation, Inc.
Pacific Pipeline Supply
John and Kerry Payne
Tim, Coeann and Cheradyn Pettit
Premier Stainless Systems, LLC
Gerry and Jeannie Ranglas
Brent and Tiffany Rathbun
Ronald Rehberger
Frank and Linda Riolo
Gavin Ross
Marshall and Pamela Saunders
Jonathan Schwartz
Frank Swayze
Target Corporation
United Way of San Diego County
US Bank
Randy and Nancy Wolman
Scott Ziobron
Leo and Emma Zuckerman

**THE HELEN
WOODWARD
SOCIETY
BRONZE CIRCLE
\$1,000 - \$2,499**

Candi Abeyta
Jane Allen
Alpaugh Foundation
Amazon Smile Foundation
Maddy Amisano
Alexia Anas
Steven and Adrienne Anderson
Gil and Karen Armour
Asset Preservation Strategies, Inc.
Baron's Market
Jeanne Bates
Bruce and Marlene Baumann
Erik and Alyssa Bayus

David Benson
Greg and Cathy Berry
Keith Blomstrom
Bobrow/Tanabe Family Charitable Fund
Jennifer Bolanis-Rogers
Kermit and Annette Booher
Dennis Bradley
Erica Brazzell
Elizabeth Bronfman
Inge Brown
The Burns Family Charitable Fund
California Library Association
Theodore Callam
Dena Cardenas
Anthony Castagnola
Bill and Teresa Chen
Bill Welch and Maren Christensen
Howard and Toby Cohen Fund of the Jewish Community Foundation
Richard Cohen
Bill and Gloria Coleman
Combined Federal Campaign
Erin Combs and Howard Pearl
Mike Coulter
Daniel and Robin Crabtree
Gigi Cramer
Charles Nak and Connie Crotty
James and Sally Cuff
Joshua and Marette DeJong
Abraham Demcho
Denby Family Foundation
Craig and Kerry Dennis
Graham Devries
Nancy Bankhead Didrickson
Shannon and Steven Diener
David and Rose Dishman
Jonathan and Dawn Doering
Jon and Karen Dougherty
Ellis Family Foundation
Embrace Pet Insurance
Mike Erlanson and Dana Ryan
Douglas and Christine Evans
Fairbanks Village Plaza
Martha Faulk
Chris Favret
Gigi Fenley
Jason Forge
Samuel I. and John Henry Fox Foundation
Linda and Glen Freiberg
Arthur and Joan Funk Charitable Foundation
Orrin and Karen Gabsch
Mike Galardi
Linda Gallagher
Tange Gavin
Melanie Gerber
Brian Dyck and Patricia Gladstone
Thomas and Donna Golich
Laura Goodman
Norma Goodnight
Dominic and Elizabeth Gotelli
Michael and Marissa Gregory
Bruce and Susan Hall
Jeraldine Hartson
Deborah Hedenberg
Sharon Heitmann
David and Sherry Hendrickson
Paula Heye
Gisela Hill
Conrad N. Hilton Foundation
Daniel Hof
Wesley and Lyn Hoffmaster

Christopher B Hollan
Murray Hougen
George Howard
Julie Hussey
Boehringer Ingelheim
Instrumentation Laboratory
Jack in the Box
Janet Tait
Jennings Charitable Fund
David and Kayda Johnson
Gerald and Patricia Johnson
The Paula B. and Oliver W. Jones Family Foundation Inc.
Jena Jonville
George and Andrea Kessel
Koji and Minako Kimura
Isaac Kousari
James and Karen Kozen
Rich Kushner
Virginia Lake
Katherine Lee
David Parker and Althea Lee
Lynberg & Watkins
Brandie Marone
Erika McCulloch and Ralph Yanzon
Victoria McDermott
The Marianne McDonald Living Trust
Adrian and Betsy McKibbin
Ruth Metz
Christina Miller
Melvin Miller
The Mirandon Foundation for Hope, Inc.
Carolyn Monkhouse
James Moore
Cheryl Morris
George and Janice Muller Charitable Fund
David and Janice Mullin
Sharla Myers
Daryl Nees
David & Vera Nelson
Christine Nespore
Network For Good
Karen Nicholson
Toni Nickell
Noel Family Donor Fund
Katherine Nowak
Edward Orenstein
Michael Orlando
Shirley Owen
Megan Parry
Lisa Pederson
Leslie Pembroke
George and Gillian Percy
Scott Perry
Pilyq
Greg Prior
Don and Lynn Prudhomme
Rob Purdy
Sukhdeep Rahi
Jeffrey Reynolds
Susan Richardson
Dave and Brenda Rickey
Cornelis Rijnbrand
Elizabeth Riley
Taylor Robertson
Rooney Fund
Douglas and Linda Rose
Amy Rowland
Matthew Ruggiero
Julie and Ken Saffir

Elizabeth Sanchez
Save This Life, Inc.
Gerald Schneeweis and Megan Wynne
Norma Schwab
Reese Sexton
Noah Shah
Kevin Sharpe
Brandon Sherman
Margaret Shoemaker
Showdogs Inc
Teri Simas
Michael Simon
Jim and Gretchen Simpson
SKY Facial Plastic Surgery, Inc
Amanda Smith
Joshua Smith
Thomas Smith
Joe and Jolie Snyder
Ian Somerhalder Foundation
Cynthia Staley
Dean Stalter
Standard Process Inc
Fern Steiner
Kenneth Stephani
Kathleen Sweeney
Denise Clark and Jan Tharp
Richard Tozer
Robert and Paula Traber
Rita Truderung
Ming-Chang Tsai
Marie Tuthill Family Trust
Vainio Fund
Karen Vold
Maria Walker
Martin Walker
Bill and Janice Ward
Michael and Amy Warlick
Sandra Wawrytko
Bill and Sheila Waxman
The Winder-Steed Fund For Positive Change C/O The San Diego Foundation
Deanne Witt
Susan Wolf
Jacquie Woods
Dianne Wright

**THE LOYAL
COMPANIONS
\$500 - \$999**

Duncan Agnew
Emily and Joyce Anderson
Sheri and Art Armendariz
Henry Armstrong
Arctic Fox
Scott Beekman
Lawrence and Judy Belinsky
Madelyn Bennett
Susan Berman
Patricia A Berry
Jim Beyster
Charles Bieler
William and Joyce Biffar
Lynne Bird
Wanda Blount
Joan Brady
Allen and Debra Briski
Vicki Brown
Julie, Kai and Anthony Campagna
Karen Campbell
Lisa Caralli
Michael Cardenas

Jack and Sandra Carey
Thomas Carr
John Joseph Castle
Patricia Catalina
Robert Cerasoli
Manon Chadwick
Scott Chap
Olivia Chin
June Chocheles
Clyde Christensen
The Maren Christensen and William Welch Fund of the Christensen Family Foundation
Rebecca Clark
Vicki Cocke
Frank Connaghan
Thomas and Susan Cordell
Patricia Crane
Kirk Crawford
Rodney and Anne Cressey
Raymond and Betty Crupi
Mary Ann "Bo" Czerwinski
Swati and Deepak Dalvie
C. Dangler
Mark Dangler
Judy Daniels
Gary and Denise David
Lisa and Karen DeBolt
Wanda Delopst
Gerald and Bozier Demaree
Lynne and William Denby
Brian and Silvija Devine
Wilma Drever
Dean and Karen Dubey
Kurtis Duffy
Susan Dunlap
Julie Dunlap
Joseph and Lois Erbs
Wendy and Chris Evans
Andrew and Barbara Fahy
Pam Fair
Kenneth Farinsky
David Favreau
Richard Feferman and Stacey Fulhorst
Kenneth and Charlotte Fortier
David and Susan Frant
Laureen Freeman
Frontstream
Walter Gajewski
John Garcia
Brett Geyer
J Geyer Plumbing, Inc.
Douglas and Susan Gilman
Mark Gordon
Michelle Green
Carol Grossi
Susan Grundman
James Hansen
David and Peggy Happ
Clayton Hargraves
Harriman Family Charitable Fund
Deborah Hayes
Paige Heenan
Vera Heidolph
Heinzinger/Pfann Family Foundation
Phil and Kathy Henry
Mark and Marianne Hoffman
Steve Hofstetter
John and Lorraine Holiman
Hornblower Cruises & Events
Amy Racinowski and Dave Horton
Amy Howe

Douglas Huffor
 Don Hutchison
 Kevin and Sandra Hutton
 Fredericka Iwatsu
 Patricia Jensen
 Edith Jirak
 John Family Foundation
 Alexis Johnson
 Gloria Johnston
 K9 Dimensions
 Patricia Kast
 Cindy Keefer
 Richard and Beverly Kerns
 John Kesser
 Amy Kimball
 Pearl Kissel
 Allegra Manacher and Curt Kohlberg
 Nicole and Kevin Korb
 Teresa Korniczky
 Avinash Kulkarni
 Arthur Leasure
 Debbie Lehman
 Barbara Leon
 Candy Leone
 George and Patsy Leopold
 Lois Lippold
 Lizzy James Design
 Gil and Mary Ann Llanes
 Karen Wang and Jason Lo
 Sandra Lombardi
 Cynthia Long
 Susan Lord
 Elizabeth Lovenberg
 Justin and Linette Lyles
 Marcy Mackless
 Ryan Mallen
 Jeanette Malone
 Jeffrey Markey
 Marsh & McLennan Insurance Agency
 Jane Martin
 Lana Matsuo
 Greg McClure
 Dennis McConnell
 Shirlee McDaniels
 Marianne McDonald
 Sharon McDonald
 Mark and Brooke McDonald
 Paige and Mark McEwen
 Caroline McGrath
 Marilyn Mcleod
 Diana Davenport Miller
 Jerry Miller
 Deborah Moceri
 Dean and Marcia Morris
 Patricia Mudgett
 Scott Munro
 Dennis Murayama
 Jeffrey Navarro
 James and Mary Ann Nese
 Patricia Newton
 Joan Noble
 Michael Noblit
 Frances C Olguin
 Olivenhain Self Storage
 The Padgett Charitable Giving fund of SEI Giving Fund
 Connie Page
 Ronald and Marilyn Palermo
 Pampered Pets USA
 Helena Parker

Mary Parriott
 Dennis and Karen Patterson
 Patti Peterson
 Janet Peterson
 Katie Pettinato
 Peter and Angela Dal Pezzo
 Laura Pierce
 Laurel Plagge
 Cindy and Joe Polujancewicz
 Brigitta Price
 Mary Lynn Price
 Judith Radick
 Deborah Redondo
 Linda Griva-Reed
 Shirlee Reinhart
 Audrey Reisenauer
 Dorothy Rischeberger
 A.C.L. Robbins Family Charitable Fund at Schwab Charitable
 Yvette and Richard Roberts
 Daniel and Nicole Roberts
 Maryann T. Rush
 Wanda Sanders
 Stacey Schmolke
 Debbie Schoen
 Steve and Bambi Schulman
 Ron Seden
 Dick and Mary Jane Setterlund
 Emily Shults
 Estelle Silverstein
 Renee Simmons
 Paula Sims
 Jim and Sarah Sleeper
 Daniel Smith
 Suzy Soo
 Paul Spafford
 Steven Spatz
 Richard Spina
 Daniel Stephen
 Jack and Louise Strecker
 Rama Subramanian
 Raquel Svennebjør
 Russel Charles Briggs Teel
 Carol and Patrick Tellez
 Robin Thomas
 Diane Thompson
 Lori Tonder
 Roy and Nancy Tophigh
 Kimberly Travaglia
 Judy Mattingly and Catherine Turner
 Eric G Vajda
 Glenna Vaskelis
 Verona Vernon
 Jane Vickers
 Leigh Vosseller
 Rick and Jill Votaw
 Mike Stansbury and Carrie Walden
 Carolyn Walker
 Christine Wallat
 Bill and Cathy Webster
 Rusty and Carol Weeks
 Howard and Jo Weiner
 Jeanne Weiser
 Joyce Welch
 Patricia Whalen
 William Whaley
 Burnet "Tigger" Wohlford
 Ronald Wong
 Brian Wynne and Diane Carmody Wynne
 Anthony and Deann Yoshida
 Tracy Young

YourCause, Corporate Giving Programs
 John and Deborah Zaharychuk
 Louise Zettner
 Louis and Gordie Zimm
 Mark Barmak and Mary Jo Zuraitis

THE FAITHFUL FRIENDS \$250 - \$499

Michael Acampora
 Theresa Accero
 John Acierno
 Linda and Larry Adams
 Noriko Adcock
 Pamela Andrus
 Kathryn Angell
 Cynthia Apuna
 Jill and Peter Attia
 Andre Augustin
 Joann and Douglas Austin
 John Bailey
 Carol Baldwin
 James and Kathleen Baldwin
 David Ballinger
 Ballistic Racers Flyball Team
 Donna Barbagallo
 Deborah Barber
 Malcolm and Naomi Barksdale
 Sally Baron
 Theresa Bastedo
 William and Sophie Baumgaertner
 Elly B Beard 2007 Trust
 Rose M Benalcazar
 Priya Bendale
 William and Diane Bergman
 The Morgan Bergren Charitable Fund
 Ginger Beriones
 Barry and Emily Berkov
 Alison Betts
 Ajda Blanchar
 Kyra Bottini
 Karen Bowden
 Richard Bowe
 Jennifer Bowen
 Devin Braun
 David Brooks
 Brookstein Family Philanthropic Fund
 Rachelle, Trevor and Austin Brotman
 Theresa Brown
 Barbara Brown
 Patrick Buchanan
 Carylann Buniva
 Paul and Vicki Busby
 Naomi Caccam
 Sandy Callahan
 Courtney Campbell
 Devon Cannon
 August and Karen Carniglia
 Nicole Carr
 Barbara Cavanah
 Baleka Chambers
 Patty Chang
 Kan Chen
 Richard Christian
 Lianne Chu
 William Roche and Andrea Clouser-Roche
 Shawna Cloward
 Toni Codd

Kimberly Cole
 Thomas and Leslie Coll
 Ouida E Collander
 Stephen Colston
 Rick Sanchez and Kathi Comba
 John Concialdi
 Robert and Catherine Condra
 Athena Constant
 Norma Cooper
 Kathy Cormier
 Lynda Costa
 Emily Coulter-Weady
 Marie S Coulter
 Kim Cooley and Donnie Cox
 Brett Cracroft
 Richard Crane and Marilyn Deming
 Margaret Crockett
 Judith Crowley
 Sandra Cruse and Alfred Winters
 Melanie Cruz
 Richard Danesi
 Thomas Davis
 Betty Davis
 Beth Krueger and Davis Denton
 Kelly Deveney
 Jana Dexheimer
 Jamie Dickinson
 David Dodge II
 Glenn and Karen Doshay
 David Doss
 Lanette Dudley
 Ashley Duncan
 Douglas Duncan
 David Durnell
 Traci Ellis
 Mike English
 Carol Enquist
 Hannah Erwert
 Ned Krumrey and Susan Farrell
 Thomas Farrell
 Laurie Feld
 H.G. Fenton Company
 Brian Finneran
 Dale Isaacs Fleming
 Anne Fletcher
 Virginia Forrest
 Nicole Fortunato
 Michele Fox
 Jennifer Fox
 Jeff Fralinger
 Harvey and Diane Frank
 Lawrence Frank
 Francine Frasier
 Robin Fried
 Alex and Nancy Frieauf
 Ben and Sue Frishberg
 Amanda Frizzell
 Grace Furman
 Sean and Erica Gadbois
 Cathleen Gahagan
 Sam and Lilia Garcia
 Donna Garcia
 Mark Garczewski
 Craig and Meredith Garner
 Steven and Carolyn Gates
 Irene Gavson
 Karen Gee
 Swan Gehrke
 Sorab Ghandhi
 Christina Gibson
 Carolyn Glazner

Dan and Patty Gold
 Wayne and Patty Goodermote
 Christina Goodman
 Glenn and Jeanette Goodrich
 Kelleen Green
 Barry and Jennifer Greenberg
 James Gregory
 Daniel Gross and Cathy Baughman Gross
 Lynette and Walter Grunenberg
 Jonathan Gurney and Agnes Santosa
 Pamela Haberlen
 Megan Harpold
 Lillian Harvey
 Sharon Hathaway
 Michael and Miriam Haughey
 Nancy Hawley
 Kelly Hessedal
 Carol Hickman
 Barbara Martin and Preston Hiers
 Diana Hildebrand
 Laurel and Robert Hill
 Lori Hinkelman
 Linda Hodges
 Samantha Hodgkins
 Judith Hodgkinson
 Patricia Hoffman
 Eric and Rana Holcomb
 Renee Holmes
 Stephen and Katherine Hon
 Marianne Hoover
 Tom Horn
 Yawen Hu
 Kurt Hubert
 Jon Covell and Karin Hughes
 Robert Hughes
 The Gary Schick and Mary Irving Fund
 Alice and Kenneth Jackson
 Richard and Shirley Jacobsen
 Natalie Jadwin
 Sharla Jensen
 Jennifer Jensen
 Merlin Johnson
 Jerilyn Jones
 Nancy Jones
 Susan Kirby Jones
 JV
 Bette Kankkonen
 Susan Karlan
 Jennifer Karp
 Miriam Kastner
 Faith Keehn
 Linda Kelley
 Kathleen Kilbourne
 Ronald Kilzer
 Patricia and Cindy King
 Mary Kirk
 Kona Surf Dog
 Ruby Konstantin
 Patricia Kopko
 Jane Krekorian
 Kroger
 Linda Lambert
 Stephen and Brigitte Lasala
 Latin Charitable Giving Fund of SEI Giving Fund
 Cynthia Lawrence
 Katherine Lazzaro
 Curt Mack and Darrell Leetham
 Gerald Young and Robert Leon
 Mark Leonard

Elizabeth Levey
 Rena Lewis
 Bernice Livolsi
 Charles Lockhart
 Sharon Lurie
 Ron Luttrull
 Carmela Lutz
 Marianne Maloney
 Kelly Manley
 Barbara Marcus
 Mary Ann Marcuzzi
 Jeff and Agnes Markin
 Susan Marlo
 David and Ann Marx
 Yvonne Mather
 TD Mathewson
 Ed Matthews and Melinda Young
 Francis Matthews
 Danielle McCallion
 David McCarthy
 Michael McCartney
 Francine McClure
 Clint McClure
 Julie McCoy
 Darryl McCoy
 Carrie McGaw
 Maurice Murray and Siriporn McGillivray
 David McGuinness
 Frank McRock and Deborah McIsaac
 Jeffrey L McLaughlin
 William and Connie McNally
 Timothy McNeil
 Barbara Meinke
 Steve, Amanda and Kathy Melanese
 Anastasia Melbrod
 Constance and Martin Melhorn
 Gregory and Phyllis Mellott
 Linda Mendoza
 Ted Merrill
 Dianne Miller
 Ashley Millington
 Marlene Mitchell
 Lisa Moallemi
 Carmen Moi
 John Moorhouse
 Larry and Sarah Morford
 Carole Morrison
 Lori Moseley
 Cathy Mudd
 Elisa Mullen
 Kimberly Murphy
 Cynthia Murphy
 Thomas and Laura Muschamp
 Wayne Mushet
 Carol Mutter
 Gail Myburgh
 Craig Myrom
 Susan and Richard Nance
 Maleah Neary
 Scott Newland
 Gary and Louise Nobel
 Randy Notestine
 Pavla Nygaard
 Robert Oakes
 Joan O'Connell
 Marie O'Connor
 Eva Olken
 Patricia O'Quill
 Robert and Sharon Ottaviano
 OtterCares Foundation

Bette Page
 Ray and Pat Paige
 Christine Paler
 Jerry Parent
 Edgar and Isolde Parrey
 Emiliano and Martina Pasillas
 Deborah Pate
 Cynthia Paulas
 Cathy Paulsen
 Peter and Jessica Pawlowski
 Judith Peck
 Miriam and Merton Pennock
 Loan Pham
 Christina Phillips
 Sally Phillips
 Nat and Patricia Piscitelli
 Roger Potratz
 Frederick and Kathleen Potts
 Paul Predki
 Sally Preston
 Charles Prettyman
 Peggy Preuss
 Margo Price
 Jenna and Joseph Price
 Lynne Prizzia
 Anna Prostrullo
 Donna Purviance
 Jim and Rochelle Putnam
 Terri Quenzer
 Charlotte Quincey
 Mr. Edward Quinn and Mrs. Nancy Quinn
 Realty Income Corporation
 Realty National, Inc.
 Ron and Teresa Rehberger
 John Rekettye
 Thomas Rendine
 Paul and Susan Richman
 Jacqueline Rine
 Mary Ann Roberts
 Victoria Rosker
 Melody Ross
 Jesse Rowe
 Lois Ruble
 Virginia Rudden
 Terence and Arlene Rush
 Amy Rushall
 Carlyn Sager
 San Diego Coastal Rotary
 Donna Sandsmark
 Bernard Scalan
 Rich and Val Schaaf
 Kathryn Schanes
 Sharon Scheele
 Bob and Vicki Schraner
 Marc Schuckit
 Robert Schulze
 Stuart Schurch
 Loretta Sconce
 Maria and Gina Scott
 Linda Sekishiro
 Donald Sevier
 Sharn Sexton
 Nancy Shea
 Tina Sheen
 Mary Shively
 Sherry Shriver
 Renee & Stanley Siegel
 Karen Siroky
 Jeff and Ann Skinner
 Susan Slaght
 Donna Smith

Jennifer Ann Smith
 Ryan Smith
 Tammy Smith
 Nina Smoley
 Margo A. Sommerfeld
 Kurt Spangler
 Royce Sparks
 Joshua Spiegel
 Amanda M Spiller
 Thomas Spiller
 Douglas Stark
 Stephanie Stearns
 Arthur Stephens
 Betty Stiller
 Scott Olsen and Elke Stuart
 Peggy Swearingen
 Amy Swindle
 Jennifer Swingle
 Helen Szkorla
 Michael Taggart and Vivian Jonas-Taggart
 William Tanner
 Ross and Kathy Tanner
 Ioanna Tarasidis
 Dorea and Stephen Tate
 Gary and Diana Taul
 Ava Taylor
 Barbara Thompson
 Carol Tohsaku
 Carol Towne
 Lynda and Cal Treger
 Patricia Trimble
 Truit Trowbridge
 Chris Uchida
 Uncle Scotty's Elite House & Pet Sitting
 William Vandling
 Margaret Varshock
 Nancy Vaughn
 Melissa Veghte
 Debra Vella
 Vella Law
 Lorrie Vercoe
 Larry Verity
 Gabriela Villalobos
 Janice Wallace
 Tammy Wallace
 Yuki Walsh
 Kathryn and William Warehall
 James Warne
 Ron and Annie Watkins
 Arthur and Joanne Watson
 Brian Welge
 Kaitlyn Welling
 Gayle Wells
 Debbie Westphal
 Fred and Kathleen White
 William Wieber
 Karen Wiley
 Christopher Wilkens
 Michael and Charlotte Williams Charitable Fund
 Rick and Christine Willis
 Corinne Wilson
 Kymberly Wilson
 Kate Wimmer
 Anne Winder-Steed
 Rochelle Winter
 Olive Withall
 William and Norah Wolff
 Curtis and Pamela Worrell
 Gloria and Bob Wright
 Kay Yim

David Zapalo
 Katherine Zemeckis
 Howard and Lauren Ziment
 Elizabeth Zonker
 Zoofari

THE BEST FRIENDS
\$150 - \$249

Edward Abate
 Ronald Abernathy
 Alex Abosamra
 Lori Bunting and Frederick Adams
 Robert Albrow
 Yolanda Alcaraz
 Linda and Ron Allinson
 Melissa Alvarado
 Nasrin and Salem Amiri
 Gary Anderson
 David and Cecilia Anspach
 Rebecca Arlauskas
 Arm Energy Management, LLC
 Arthur Ayala
 Bryce Bacher
 Kristine Back
 Sara Bagliere
 Joan Ballard
 Hughes Bancroft
 Sandi Banister
 Brian Barnard
 Rose Mary Barrette
 Lynn Marie Becker
 Amber Begell
 Edward Di Bella
 Robert Bennett
 Amy Benoit
 Beverly Bensalem
 Frank and Harriet Benson
 Tia L Berg
 Bruce and Linda Berguson
 Michael Bernal
 Fred Bertheas
 Katie and Olaf Besgen
 Barbara Jean Bethel
 Sherry Betts
 Michael Bingham
 Ashley Doyle and Ryan Boice
 Darcee Bolf-Schmidt
 Donald Book
 Brita Boudreau
 Debbie Bowders
 Lindsay Bowman
 Braby Family Charitable Fund
 Louise Branch
 Cheryl Brechtelsbauer
 Adam Breede
 Ronna Breliant
 Cynthia Brizard
 Kari Brody
 Robert Brown
 Twila Brown
 Alexandria Brzozowski
 Kathleen Buchan
 Sarah Bucko
 Mary Ellen Buehler
 Leslie Burner
 Bruce Burr
 Theodore H Butz & Suzanne B Butz Fund
 Suzanne Cairo
 Steve Campbell
 Kathy Caraco and Stacy Ridge
 Deborah Cardarelli

Diane Carlos
 Jeffrey Carney
 Wendy Carpenter
 J. and Nickie Carpenter
 Sean Casey
 Dorothy Catone
 Kris Cervantes
 Connie Chaney
 Ron Chapman
 Hayley Charas
 Robert and Renae Chaulk
 Jasmine Chow
 Beverly Christensen
 Howard Chu
 Denise Churchill
 Lori Clemons
 Srivatsan Thiruvengadam and Annalisa Clink
 Allen Cochrane
 Lynn Cody
 Robin Cohen
 Melissa Colclough
 James and Joan Cook
 Barbara Corrales
 Alice Correll
 Jamie Craig
 Alex Crandall
 Linda and Kyle Crawford
 Stanley and Rosanne Crooke
 Barbara Crossley
 Kurt and Andrea Culver
 Gina Curry
 Carlton Black and Christine Curtis
 Julia Dalpezzo
 Patria Danielson
 Barbara D'Aversa
 Deborah Davis
 Suzanne Davis
 Donna Deapen
 Joan Decherrie
 Steve DeMattos
 John Deskovick
 Barbara Dexter
 Kay Di Giacinto
 Lee Dickens
 Doris Dickinson
 Stewart Dier
 Kathie Dillon
 Patricia Disston
 Glenn Ditzenberger
 Ann Dizney
 Lynn Dolby
 Russell and Marsha Dudley
 Regina Dunn
 Charles and Christie Dunning
 Darryl Watson and Diane Edenfield
 Wilda Edgmond
 Randy and Kathy Ehrle
 Julie Erdfelt
 Julia Erickson
 Susan Eschbach
 Ann Evans
 Sarah Factor
 Edward and Susan Glassett Farrelly
 Linda Fernandez
 Beatrice Finley
 Sanford Fisch
 Terry Fleischman
 Bruce Foltz
 Kendall Forte
 Paul Frank
 Barbara Frazee

Mary Freeland
 Kathleen French
 Craig Friehauf
 Chris Gale
 Kentucky Gallahue
 Ophelia Garcia
 Tereze Gegaj
 Fran and Jessica Gercke
 Arthur Gilbert
 Derek Gilbert
 John Gildner
 Kim Gilligan
 Jessica Gineris
 P.J. Giovanelli
 Kathy Giovanni
 Bruno and Hazel Giraldi
 Kelowna Giuliano
 George J Giustino
 Mark and Hanna Gleiberman
 William and Diana Glimm
 Karen Glover
 Gayathri Gokulnathan
 Dianna Goldman
 James Gonzales
 Susan Goodell
 Robert and Cheryl Gordon
 Laurie Gore
 Nancy Gosnell
 Christine Grace
 Diana Graham
 Debbie Graviss
 Sarah Green
 Herbert and Mary Greenberg
 Janet Gross
 Susan Grossinger
 Susan Grover
 Starr Grundy
 Edward Hand
 Mark Hander
 Kathryn Hanten
 Florence Harrod
 Jacqueline Hart
 Carolyn Harvey
 Geoffrey Miller and Karen Haubrich
 Megan Hawker
 Linda Heald
 Susan Hector
 Jan Hegstad
 Robert and Margo Heidemann
 Elizabeth Helbock
 Amy, Scott and Ian Hendries
 Cecelia Hessler
 Jake Hester
 Charles and Anne Hewel
 Frank and Jeanne Hewitt
 Karl and Dawn Higgins
 Keith Hinkle
 Judd Hoffman and Katie Sweet
 Louise Hofherr
 Darrell Hohemsee
 France Holme
 Peter and Heidi Hong
 Franklin and Sandra Hoover
 Anne Howard
 Lesley and Charmayne Howe
 Joan Huffman
 Helen Humphries
 Christine Hunting
 Cynthia Isaacs
 Michael Jackson
 Hannah Jarson

Barbara Johnson
 Gayle Johnson
 Diane Jolene
 Kimberly and Eric Jones
 Marilyn Jones
 Kym Jones
 Ronald Jones
 Emi Kaneshiro
 Joyce Kapsal
 Norman and Linda Kass
 Janice Monaco Keller
 Michael Keough
 Dean Kernus
 Taeko Kerry
 Elizabeth Khodabakhsh
 Donna Kiley
 Janice King
 Mona Kinkel
 Joni Kirk
 Michael Klinkert
 Aurie Knicker
 Michael and Linda Koligman
 Lorna Kooiker
 Emilie Kotik
 Rebecca Kozak
 Ann Kraemer
 Karen Krause
 Cynthia Kronemyer
 Aaron and Brittany Krugman
 Carolyn Kutzke
 James Lafave
 Renate Laight
 Linda Lampila
 Karen LaPlante
 Gael Lauritzen
 Susan and Duane Lawson
 Bike tow Leash
 Jasmine Lee
 Lisa Leonard
 Lois Leonard
 Terri and Perry Levine
 Mordy and Elizabeth Levine
 Barbara Lewis
 Jeffrey Leyton
 Millie Liles
 Michele Linhardt
 Sandra R Linn
 Tamara Litke
 Roy Lopez
 Laura Lotz
 Pamela Lucado
 George Lysy
 Elisa MacDonald
 Robert Magaudda
 Kristine Maier
 Marina Martin
 Britta Martinez
 Laura Mateo
 Katherine Mathews
 John Matson
 Maureen McBreen
 Jessie McBride
 Dean McCall
 Helene McCarren
 Kelly McCartney
 James McCaskey
 Sharon McCusker
 Jessica McElfresh
 Jocelyn McGrath
 Nancy McMahon
 Sharon McNair
 Connie McNally

Amanda McNulty
 Ronald and Pamela McNutt
 Karen Meinke
 Vipin Menon
 Sharon Metz
 Carl and Marie Metzgar
 Kate Mills
 Carlos Minvielle
 Taunya Moen
 Leighton Mole
 Antoinette Monaco
 Cynthia Monahan
 Inacio and Ana Montez
 Janice Moody
 Christopher Mooney
 Jeremy Morris
 Mary Morris
 Toni Morris
 Cathy Moulton
 Christian Mueller
 Christy Mulloy
 Edward and Marylee Muns
 Dennis and Leigh Ann Naas
 Nicole Nakagawa-Rafter
 Fred and Julie Nankervis
 Nayotheorgi
 Jan Neels
 Conni Nelson
 David Nemirov
 Susan Neptune
 Amy Nett
 Elizabeth Newman
 Michael Nichols
 Troy Niguidula
 Bill Niklaus
 Ricky Nozaki
 Sean Nugent
 Kirsty Nunez
 Ocean Hills Kennel Club
 Monica Olmos
 Billie and Joe Orechovesky
 Allison Oster
 Parada Painting
 Kay Patterson
 Nancy Paulsen
 Katherine Payne
 Paypal Giving Fund
 Michele Pearson
 Kimberly Pence
 Dale Pering
 Judith Persky
 Shirley Petersen
 Mary Ellen Pflieger
 JP Phelps
 Shirley Phillips
 Darlene and Mark Pidgeon
 Jay Piper
 Nancy Piritz
 Karen Polk
 Ward and Sharon Powell
 Cheryl Prestianni
 Jenni Profit
 Edward Pun
 Laura Quay
 Kathleen Rae
 Palmyra Raggio
 Ralphs Grocery Company
 Alexis Ranglas-Behseta
 Karen Ranker
 Wendy Ravenel
 Greg and Sandy Rechtsteiner
 The Resko Family

Steve Resler
 Heather Reuter
 Meri Lynn Rheinschmidt
 Kristen Rice
 Jeff Rice
 Christine Ridd
 Maria Rivera
 Rick Rizek
 Wendy Robello
 Carol Roberts
 Todd Roberts
 Don and Peggy Robertson
 Arturo Romero
 Diane Romero
 Laura Romero
 Gayle Loranger Rose
 Donna J Rosemier
 Beth Rosen-Prinz
 Natalie Rosen
 Robert Rosi
 Robert and Diana Ruark
 Ruthann and Tony Ruf
 Brendan Ruff
 Matthew and Joanne Saccomanno
 Shelley and Chris Samaritoni
 Tina and Abe Samson
 Emily Sandstrom
 Donald Santamaria
 Teresa Sattler
 Michel Schade
 Lindsey Schaefer
 Rolf Schild
 Robert Schlesinger
 Melissa Schmidt
 Meredith Schreiber
 Vincenzo Sferra
 Susan Sharpe and Fran Zumwalt
 Michelle Shepherd
 Elizabeth Showalter
 Jacqueline Siegel
 Lisa Silva
 Angela Simmons
 Jill Simoes
 Lisa Simons
 Diane Singer
 Charlene Smallwood
 Pete and Mary Smith
 Michele Smith
 Helen and Brian Smith
 Erin Smith
 Linda Smith
 Kathleen and Steven Sorensen
 Patricia Sorenson
 Candace Souleles-Lipisko
 Keith Spears
 Kathy Spencer
 Judy Splitgerber
 Donald Starr
 Shaunna Stavana
 Bradley Steele
 Julian and Gale Stienon
 Terry Stillwell
 Ron and Barbara Stolle
 Chau Stone
 Lura Strawn
 Marguerite, Emily and Chuck Stroyeck
 Romaine Sullivan
 Karen Sumners

Clifford and Pamela Surko
 Cary Svet
 Cheryl Sykes
 Janet Taipale
 Ryan Ritchie and Lang Tang
 Bruce and Bonnie Teevan
 Meg Louise Terry
 Gail Thompson
 Nancy Thompson
 Paula Tilley
 Ninad Tipnis
 John Tobin
 Timothy Tolman
 Gary Toomer
 Marjan Torabi
 Jacqueline Toth
 Janet Trentacosta
 Carlos Trevino
 Debra Trevino
 Christine Trigeiro
 Sherrill Trovato
 Sandy Troya
 Michael and Irena Tseitlin
 Satoe and Clyde Turner
 UC Irvine
 United Way of Central Indiana
 Gerry Valin
 Eugene and Lily Van Vleet
 Pat VandenHeuvel
 Glen and Kristine Vickery
 Timothy and Lydia Vize
 Diana Vo
 Andrew Walcher
 Howard Waldow
 Naomi Walenta
 Al and Deanna Waloch
 Peter R and Ellen Ward
 Andrew and Deborah Wasa
 Sherri Way
 James Weaver
 Maggie Wegner
 Steven Weinstein
 Sarah White
 Elizabeth White
 Judy Whitney
 J. Heywood and Stephanie Wilde
 Joan Williams
 Naomi Williams
 Luanne Williams
 Chester and Janice Willis
 David Wilson
 Susan Winbigler
 Edward and Linda Winrow
 Gregory and Karen Wolting
 Mary Wong
 Sharon Worman-Bryne
 Pam Wotkyns
 John Wurster
 Melinda Wynne
 Dorothy Yamagishi
 Andrea Yerramilli
 Nischel Yinger
 Amber Yoo
 Lora Zilinsky
 Silvia Zuniga

HOW YOU CAN HELP

There are so many things you can do to help animals and people in need in our community.

DONATE TODAY! Contact 858-756-4117 x358, or AnneE@animalcenter.org

MEMORIAL GIFTS

We have a beautiful program called “I Remember You” to memorialize pets online, by “lighting a candle” and sharing a story and photo. If you have any questions please call the Center, x350 or visit the site to light a candle.

old.animalcenter.org/irememberyou/

MONETARY DONATIONS

Helen Woodward Animal Center relies heavily on private donations to fund our programs.

BECOME A ‘PAW PAL’

Monthly donors support our work throughout the year with recurring monthly gifts. Join "Paw Pals" and receive a commemorative pin to show your support.

IN-KIND DONATIONS

To help reduce costs, our programs are always in need of items to support their activities. Visit animalcenter.org for our current wish list of specific needs.

ALTERNATIVE GIFT CARDS

Give the gift that saves lives! A gift to help the animals is a great way to celebrate a birthday, graduation, or the upcoming holidays. We will send a personalized card notifying the recipient of your gift.

VEHICLE DONATIONS

Take the hassle out of selling your old car, truck, motorcycle, or other vehicle — donate it to Helen Woodward Animal Center! Our simple, hassle-free program will take care of all the paperwork, pick up your vehicle, and send you the documents needed for a tax deduction, while providing valuable funds to help the animals! Call **844-854 PAWS** to donate.

PLANNED GIFTS & PET BEQUESTS

Including Helen Woodward Animal Center in your will or trust will create a lasting legacy to help pets and people in need for years to come. Make provisions to ensure your pets will be cared for in the event of your passing.

Contact **Renee Resko: 858-756-4117 x347** or email ReneeR@animalcenter.org

SPECIAL EVENTS

The Center holds a variety of exciting fundraising events throughout the year from our Surf Dog Surf-A-Thon to our Fling Gala. Visit animalcenter.org for more information.

CORPORATE AND BUSINESS PARTNERSHIPS

Get your company involved to raise funds for the animals by sponsoring an event, running your own fundraiser, or participating in our HOPE Telethon.

Contact **Marilyn Martinez: 858-756-4117 x312** or email MarilynM@animalcenter.org

VOLUNTEER

Our work depends entirely on the support of our dedicated volunteers. Many opportunities are available for youth, adults, and groups in our various programs and events.

Contact **Megan McCarty: 858-756-4117 x305**, email MeganM@animalcenter.org or sign up at animalcenter.org

PLANNED GIVING

- I would like to know more about the Center’s pet bequest policy.
- I would like to know more about including the Center in my will.
- I would like to be invited to an informational bequest luncheon.
- I have already included the Center in my estate plans.

Name _____

Address _____

City _____ State _____ Zip _____

Phone _____

Email _____

For more information, please detach and return completed form in the provided remit envelope.



PROTECT YOUR
loved ones...



HELEN WOODWARD ANIMAL CENTER

6461 El Apajo Road • P.O. Box 64 • Rancho Santa Fe, CA 92067
Phone (858) 756-4117 • Fax (858) 756-1466 • animalcenter.org

CREATING A HUMANE WORLD FOR ANIMALS AND PEOPLE

event calendar

march

- 10** Paws & Pages
- 13** Equine Tack Sale
SnakeSmart
- 14** Animal Care Camp

*march 29-
april 16*
Spring Critter
Camp

*march through
may* Spring Tails

may

- 1** You Can be a
Veterinarian Camp
- 12** Paws & Pages
- 15** Snake Smart

june
19 Spring Fling Gala:
Imgainarium

COW10321

shop • donate • volunteer



reduce • reuse • recycle



Benefiting Helen Woodward Animal Center
**ORPHANED
objects
resale shop**

*Spring is the perfect
time to donate to
Orphaned Objects
Resale Shop. When you
do, you are directly
supporting the pets
and programs at Helen
Woodward Animal
Center.*

**Open All Week
10 am - 5 pm**

www.OrphanedObjects.org
858-756-4117 x383

6525 Helen Woodward Way, Suite B
Rancho Santa Fe, CA 92067
enter off San Dieguito Rd.
& follow signs to shop



ONCE IN A LIFETIME NAMING OPPORTUNITIES

Our new building is open but you can still purchase commemorative plaques and pavers. These opportunities allow you to make a gift in memory of, or in honor of a beloved pet or family member, and give you a chance to leave your legacy.

Visit animalcenter.org/future TODAY to customize your gift for our Adoptions building and help us continue to give orphan pets the new facility they deserve!

Renew or upgrade your GIFT CLUB MEMBERSHIP:

- The Best Friends\$150 - \$249
- The Faithful Friends.....\$250 - \$499
- The Loyal Companions.....\$500 - \$999
- The Helen Woodward Society,
Bronze Circle..... \$1,000 - \$2,499
- The Helen Woodward Society,
Silver Circle.....\$2,500 - \$4,999
- The Helen Woodward Society,
Gold Circle.....\$5,000 +

Make a one-time gift club membership donation OR divide your gift into 12 monthly payments by joining Paw Pals monthly supporters.

If you have any questions, call the Development Office at 858-756-4117 x350